



Electrolux

Warewashing Green&Clean Hood Type Dishwasher, Manual with Continuous Water Softener & Filtering System

ITEM # _____

MODEL # _____

NAME # _____

SIS # _____

AIA # _____



Electrolux



Warewashing

Green&Clean Hood Type Dishwasher, Manual with Continuous Water Softener & Filtering System

504257 (EHT8IWSG)

Hood type dishwasher, with double skin insulated manual hood, Wash Safe Control, CLEAR BLUE Filtering System, built-in continuous water softener, built-in detergent dispenser, rinse aid dispenser and drain pump, 80r/h

Short Form Specification

Item No. _____

304 Stainless steel construction to include double skin insulated hood, external, front and side panels, wash tank, tank filter plus wash and rinse arms. Uses 2 liters of clean 84°C final rinse water per cycle. Rinse temperature and pressure guaranteed by

Main Features

- [NOT TRANSLATED]
- ETL-Sanitation approved (ANSI/NSF 3 sanitation standard) and DIN 10512 compliant.
- Continuous Water Softener (CWS) to ensure that 100% of the water entering the dishwasher is softened thus providing spot-free results.
- Requires only 2 liters of water per washing cycle thus ensuring low energy, water, detergent and rinse aid consumption.
- Built-in atmospheric boiler sized to raise incoming water to a minimum of 84 °C for sanitizing rinse. No external booster is required. Constant temperature of 84 °C throughout the rinsing cycle regardless of the network's water pressure.
- Automatic regeneration of CWS during the wash cycle, based on water consumption, guarantees non-stop dish washing.
- Green light of "WASH SAFE CONTROL" confirms that items have been rinsed properly.
- Unique temperature interlock guarantees required temperatures in both the wash and final rinse.
- Maximum capacity per hour of 80 racks or 1.440 dishes (High productivity mode) easy to switch to 63 racks or 1.134 dishes (ETL-Sanitation mode) by pressing a button.
- 45/84/150 seconds cycles (High productivity mode); 57/84/150 seconds cycles (ETL-Sanitation mode).
- Incorporated Soft Start feature to offer additional protection to more delicate items.
- Slanted wash arms and sloped ceiling to avoid detergent-filled wash water dropping on clean dishes after the rinsing phase, thus guaranteeing ideal washing results.
- Cycle may be interrupted at any time by lifting the hood.
- Automatic self-cleaning cycle and self-draining vertical wash pump and boiler to avoid bacteria proliferation.
- State-of-the-art electronic controls with built-in programming, self-diagnostics for serviceability and automatic interior self-cleaning cycle.
- Built-in rinse aid and detergent dispenser with automatic initial and continuous cycle loading for perfect result while minimizing service and maintenance needs.
- Boiler power setting from control panel to facilitate technician's operation when reducing total installed power, thus avoiding the need of machine opening.
- Three phase electrical connection, convertible to single phase on-site.
- IP25 protection against water jet, solid objects and small animals (larger than 6 mm).

APPROVAL: _____



Electrolux

Warewashing Green&Clean Hood Type Dishwasher, Manual with Continuous Water Softener & Filtering System

Construction

- Heavy duty Stainless steel construction. Internal cavity as well as exterior panels are in 304 series Stainless steel.
- Pressed tank in front position to facilitate cleaning.
- Double skin insulated hood.
- Specially designed Stainless steel wash/rinse arms and nozzles provide superior cleaning action.
- Revolving interchangeable Stainless steel wash/rinse arms above and below the rack, screw out for simple clean up.
- Pre-arranged for on-site HACCP implementation and Energy Management device.
- Element protection from dry fire and low water.
- Unit to include drain, detergent and rinse aid dispenser pumps

Included Accessories

- 2 of Yellow cutlery container PNC 864242
- 1 of Basket for 18 dinner plates - yellow PNC 867002
- 1 of Basket for 48 small cups or 24 cups - blue PNC 867007

Optional Accessories

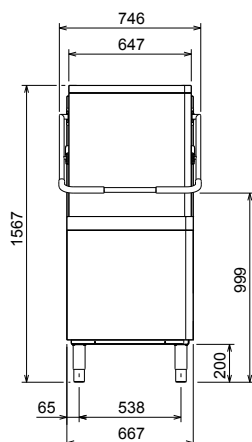
- KIT 8 PLASTIC BOXES FOR CUTLERY-YELLOW PNC 780068 ☐
- HACCP printer kit PNC 864002 ☐
- HACCP CONNECTION CABLE DOUBLESKIN HOOD T PNC 864007 ☐
- Stainless steel inlet hose kit PNC 864016 ☐
- Kit to measure total and partial water hardness PNC 864050 ☐
- Yellow cutlery container PNC 864242 ☐
- BACK PANEL 304AISI-DOUBLE SKIN MANUAL-HT PNC 864342 ☐
- Front control panel for double skin hood type dishwasher PNC 864372 ☐
- Connecting kit for duet manual hood type dishwasher PNC 865264 ☐
- Kit 4 plastic boxes for cutlery - yellow PNC 865574 ☐
- Basket for 6 trays 530x370 mm - red PNC 866743 ☐
- Basket for 12 soup bowls - green PNC 867000 ☐
- Basket for 18 dinner plates - yellow PNC 867002 ☐
- Basket for 48 small cups or 24 cups - blue PNC 867007 ☐
- Basket for bulk cutlery-capacity: 100 pieces - brown PNC 867009 ☐
- Cover rack for small and light items (500x500 baskets) PNC 867016 ☐
- Baskets for 25 tilted glasses (h 120mm - diam 80mm) - blue PNC 867021 ☐
- Basket for 16 vertical glasses (h 70 mm - diam 100 mm) - blue PNC 867023 ☐
- Basket semi-professional 500x500x190mm PNC 867024 ☐
- Baskets for 16 tilted glasses (h 220mm - diam. 100mm) - blue PNC 867040 ☐



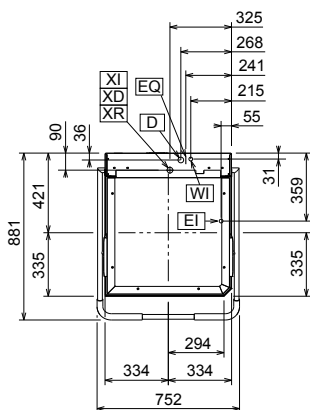
Electrolux

Warewashing
Green&Clean Hood Type Dishwasher,
Manual with Continuous Water Softener
& Filtering System

Front



Top



CWI

= Cold Water inlet

D = Drain

EI = Electrical connection

EQ = Equipotential screw

HWI

= Hot water inlet

V = Air vents

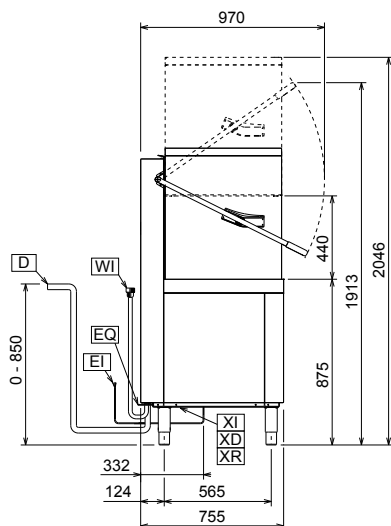
WI = Water inlet

XD = Detergent connection

XI = Chemicals inlet

XR = Rinse aid connection

Side



Electric

Supply voltage:

504257 (EHT8IWSG) 400 V/3N ph/50 Hz

Convertible to:

230V 1N~; 230V 3~

Default Installed Power:*

9.9 kW

Reducible Installed Power:*

6.9 kW

Boiler Heating Elements Power:*

9 kW

Boiler Reducible To:*

6 kW

Tank heating elements:

3 kW

Wash pump size:

0.8 kW

Water

Water supply temperature:

10-65 °C

Water consumption per cycle (lt):

2

Boiler Capacity (lt):

12

Tank Capacity (lt):

24

Drain line size:

20.5 mm

Inlet Water supply pressure:

0.5 - 7 bar

Inlet water supply hardness (MAX):

3/4"

Incoming water line size:

3/4"

Key Information

N° of cycles:

3

Duration cycle - High

productivity:*

45/84/150 sec.

Duration cycle - Thermal Label

compliant:

57/84/150 sec.

Racks per hour - High

productivity: *

80

Racks per hour - Thermal Label

compliant:

63

Dishes per hour - High

productivity: *

1440

Dishes per hour - Thermal Label

compliant:

1134

Wash temperature - High

productivity:

55-65 °C

Wash temperature - Thermal

Label compliant:

75 °C MIN

Rinse temperature (MIN):

84 °C

External dimensions, Height

1567 mm

External dimensions, Width

752 mm

External dimensions, Depth

755 mm

Net weight:

117 kg

Shipping weight:

129 kg

Shipping volume:

1.23 m³

Packaging size (WxDxH):

752x755x1567 mm

Noise level:

<63 dBA

* According to market standard, the productivity is declared at an inlet water supply temperature of 50°C . If the water is supplied at 65°C, the power can be reduced by 3 kW without any loss in productivity.

NOTE:

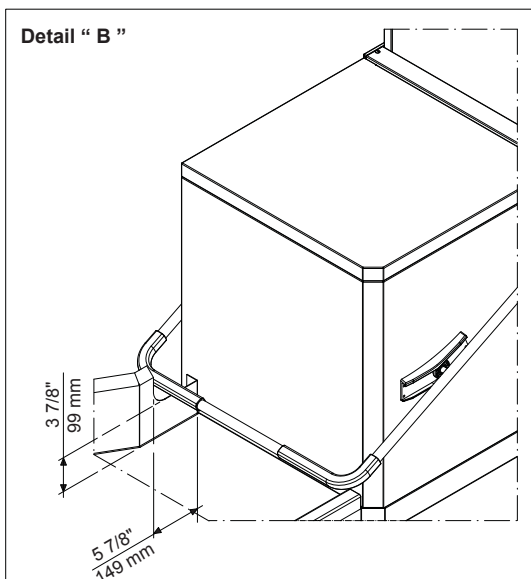
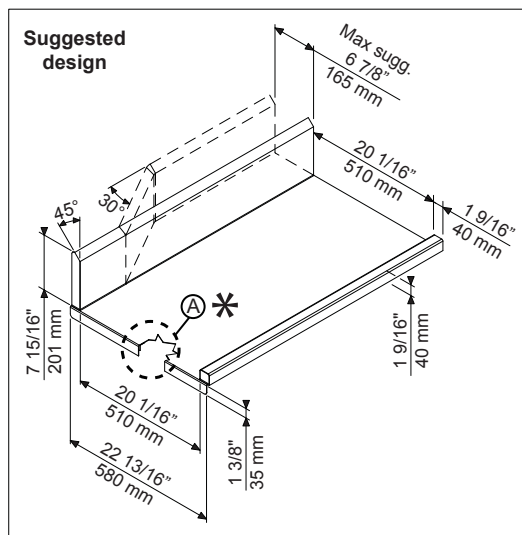
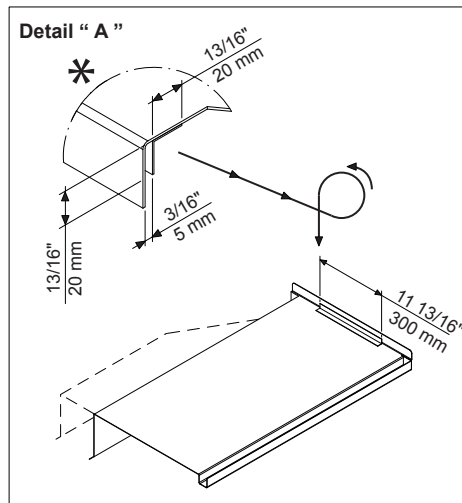
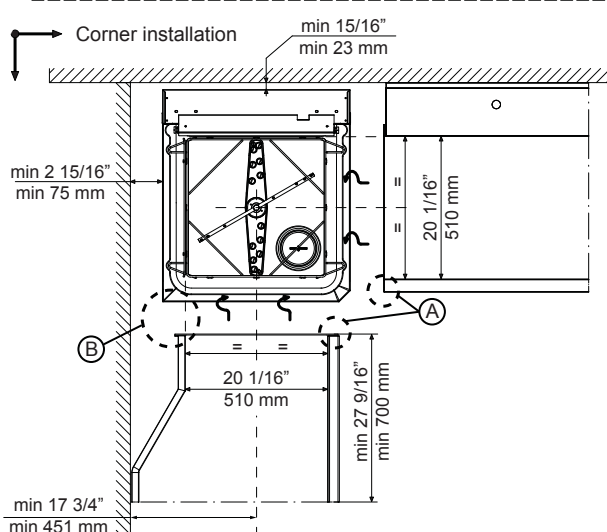
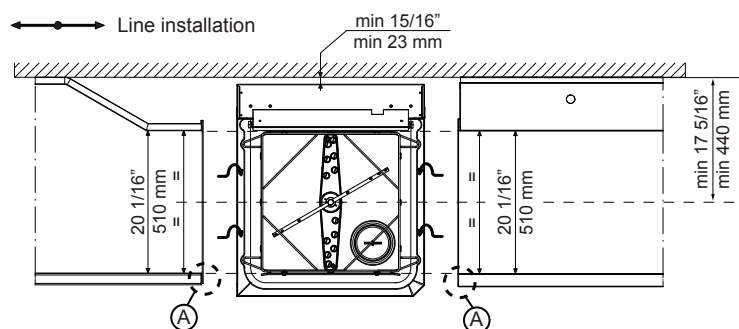
If the water supply temperature is less than 50°C, it is necessary to request higher power to maintain productivity.



Electrolux

Warewashing
Green&Clean Hood Type Dishwasher,
Manual with Continuous Water Softener
& Filtering System

Recommended table connection



All tables must be connected to the dishwashing units according to local regulations and industry standards which may differ from the recommendations herein suggested. Electrolux Professional is not liable for any failure in complying with local design standards.

Doc Nr : 59566BF00



Warewashing
Green&Clean Hood Type Dishwasher, Manual with Continuous Water
Softener & Filtering System
The company reserves the right to make modifications to the products
without prior notice. All information correct at time of printing.

2014.06.23