

## Warewashing Electric Rack Type Dishwasher with 2 Speeds & Pressure Boiler - 140 r/hr

ITEM # \_\_\_\_\_  
MODEL # \_\_\_\_\_  
NAME # \_\_\_\_\_  
SIS # \_\_\_\_\_  
AIA # \_\_\_\_\_



### Warewashing

Electric Rack Type Dishwasher with 2 Speeds & Pressure Boiler - 140 r/hr

**534304 (WTCSI40ERB)** Rack type dishwasher, electric, r>l, 2 speeds, pressure boiler, 140b/h

**534305 (WTCSI40ELB)** Rack type dishwasher, electric, l>r, 2 speeds, pressure boiler, 140b/h

### Short Form Specification

#### Item No.

304 AISI stainless steel front and side panels, strainers and wash and rinse arms. Pressed wash tank (100 liters) for easier cleaning. Washing tubes in stainless steel. Double-skinned construction and counter balanced door. Built-in pressure boiler. Self draining wash pump. Automatic start/stop function. Wash and single rinse in one compact module. 2 speeds variable on installation. Electric heating. HACCP autodiagnostic check control. Feeding direction: right to left. Hourly capacity: 1st speed 2520 dishes/140 baskets; 2nd speed: 1620 dishes/90 baskets.

### Main Features

- Push button self cleaning cycle of the wash and rinse zones for ease of "end of day" cleaning.
- Washing cycle is carried out with water circulating at a temperature of 55-65 °C, whereas the rinsing cycle is carried out with clean water coming from the water system, heated to a max. temperature of 80-90 °C.
- Pressure boiler.
- Speed of conveyor can be set through the control panel by the operator. 90 racks/hr or 140 racks/hr.
- Large counter balanced inspection doors allow unrestricted all round access to the wash and rinse area. Door is insulated with injected foam. This adds strength as well as reduces noise and heat loss.
- Large filters sloping towards the front to the smaller pressed filter box for quick removal. Filters feature holes smaller than the concave ant-block wash nozzles so large food cannot enter and block the wash system.
- Adjustable feet for full access underneath the machine for cleaning.
- Wash chamber without internal pipes and therefore no hidden dirt traps.
- Self draining wash pumps provide maximum hygiene with no smells and all wash and rinse zones drain automatically at the push of a button.
- Powerful 2 hp (1.5 kW) wash pump.
- Deep drawn pressed wash tank with fully rounded corners, sloped towards the drain to prevent dirt build up provides fast drainage in only a few minutes. Pressed wash tank with no welded points offer a guaranteed water tight solution.
- Dishwasher structure is held together with a solid 50 x 50 mm stainless steel tube sub-frame to provide long term sturdiness.
- All main components made in heavy duty anti-corrosive 304 type Stainless steel: tanks, front and side panels, wash & rinse arms and caps, doors, front, handle and rack transportation system.
- Wash and rinse arms can be easily removed for cleaning.
- IPX5 water protection.
- Autostart/stop ensures that the machine runs only when a rack is passing through it. This reduces both water and energy consumption.
- Electronic control panel features large display to read wash and rinse temperatures.
- Low water consumption. At 140 racks per hour, the machine uses only 240 liters/hr.
- Machine predisposed for external detergent and rinse aid connections.
- Built-in rinse water heater to increase the temperature of the final rinse water.

APPROVAL: \_\_\_\_\_

### Optional Accessories

- Drain kit for modular and compact rack type dishwashers PNC 864150 ☐
- Kit of 12 stainless steel plugs for washing arms for modular and compact rack type PNC 864239 ☐
- Air gap for compact rack type PNC 864309 ☐
- Electric hot air blower, 600mm, for compact rack type, right>left (only for 534304) PNC 864506 ☐
- Electric hot air blower, 600mm, for compact rack type, left>right (only for 534305) PNC 864507 ☐
- Electric drying tunnel, 900mm, with door, for compact rack type, right>left (only for 534304) PNC 864516 ☐
- Electric drying tunnel, 900mm, with door, for compact rack type, left>right (only for 534305) PNC 864517 ☐
- Electric drying tunnel, 600mm, with door, for compact rack type, right>left (only for 534304) PNC 864518 ☐
- Electric drying tunnel, 600mm, with door, for compact rack type, left>right (only for 534305) PNC 864519 ☐
- Electric corner drying tunnel, for compact rack type, right>left (only for 534304) PNC 864520 ☐
- Electric corner drying tunnel, for compact rack type, left>right (only for 534305) PNC 864521 ☐
- Basket for 5 half insulated trays 530x370 mm - red PNC 867005 ☐
- Kit 6 baskets for 1-tank Rack Type dishwashers PNC 867050 ☐
- Kit 9 baskets for 1-tank Rack Type dishwashers PNC 867051 ☐

### Electric

#### Supply voltage:

<b>534304 (WTCS140ERB)</b>	400 V/3N ph/50 Hz
<b>534305 (WTCS140ELB)</b>	400 V/3N ph/50 Hz

Machine requires one electrical connection.

### Water:

**Inlet Water supply pressure:** 44 - 102 psi (3 - 7 bar)

**Inlet Hot Water Supply Temperature for wash section:**

50 °C

**Inlet Water supply hardness:** 4-8 gpg (7-14 °fH)

**Incoming Hot water line size (wash section):**

G 3/4"

**Drain line size (wash section):**

G 1 1/2"

**Hot Water consumption: Liters/hr:**

240 liters/hr

**Wash Temperature:**

55-65 °C

**Wash tank size:**

100 liters

**Wash pump power:**

1.5 kW

**Wash pump water flow:**

450 l/min

**Initial fill Hot water requirements:**

112 liters

**Final Rinse Temperature:**

80-90 °C

**Booster heating power:**

16 hp (12 kW)

**Final Rinse water flow:**

240 liters/hr

**Hot water booster capacity:** 12 liters

### Key Information:

**Productivity racks per hour (max speed):**

140 racks/ 2520 dishes

**Productivity racks per hour (min speed):**

90 racks/ 1620 dishes

**Table to Table connection:**

1118 mm

**Number of tanks:**

1

**Height with door open:**

2119 mm

**Charging hole size (width):**

530 mm

**Charging hole size (height):**

501 mm

**External dimensions, Height:**

1771 mm

**External dimensions, Width:**

1125 mm

**External dimensions, Depth:**

884 mm

**Net weight:**

508 kg

**Shipping weight:**

598 kg

**Shipping height:**

2060 mm

**Shipping width:**

1890 mm

**Shipping depth:**

1040 mm

**Shipping volume:**

4.05 m<sup>3</sup>

**Noise level:**

<70 dBA

Unit predisposed to accept external detergent dispensers, detergent probes and rinse aid dispensers.

### Air Emission:

#### Air Flow:

Unit optionally supplied with extended vent hoods.

Exhaust extraction not more than 177 CFM (300 cubic meters/h).

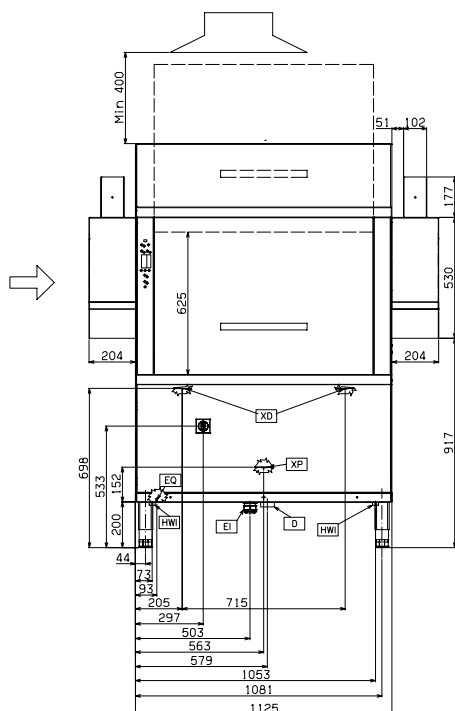
Refer to installation diagram for minimum exhaust hood installation height.



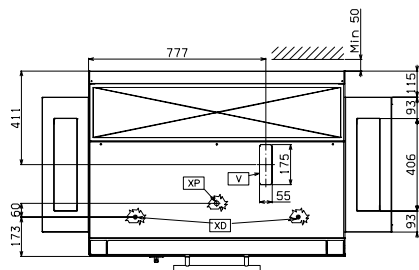
Electrolux

# Warewashing Electric Rack Type Dishwasher with 2 Speeds & Pressure Boiler - 140 r/hr

Front

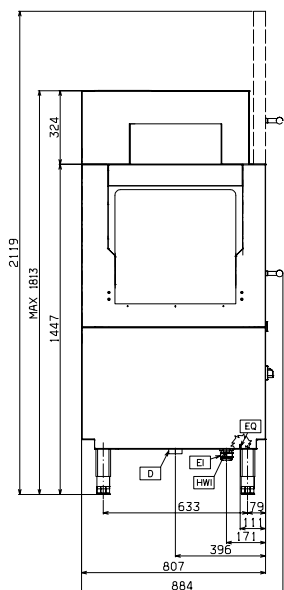


Top

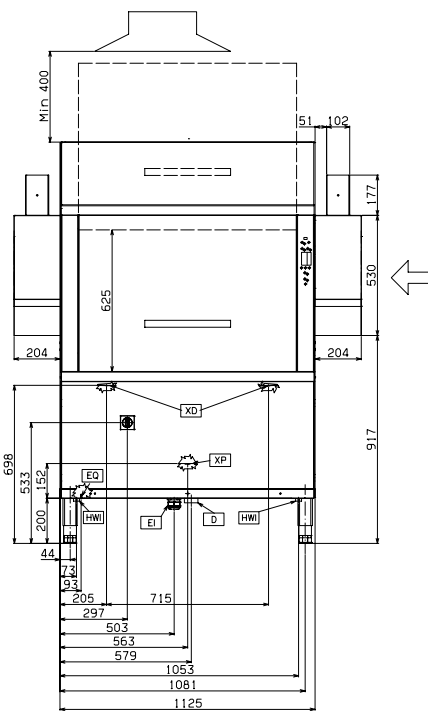


- D = Drain
- EI = Electrical connection
- HWI = Hot water inlet
- V = Air vents

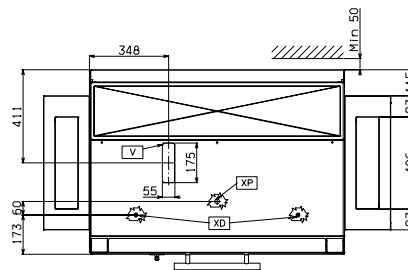
Side



Front



Top



- D = Drain
- EI = Electrical connection
- HWI = Hot water inlet
- V = Air vents

Side

