



Electrolux

Blast Chillers CW Blast Chiller Crosswise - 28 kg

ITEM # _____

MODEL # _____

NAME # _____

SIS # _____

AIA # _____



Electrolux



Blast Chillers CW

Blast Chiller Crosswise - 28 kg

726622 (RBC101)

Blast chiller 28kg, for 10x1/1GN crosswise oven. Preset customised programming possible. Supplied with a single sensor probe

Short Form Specification

Item No.

For 10 GN1/1 or 600x400 mm trays. Load capacity: chilling 28 kg; (UK guidelines). Main components in 304 AISI stainless steel. Internal rounded corners and drain. Built-in refrigeration unit. Automatic detection of food probe insertion. Automatic and Manual defrost. Blast chilling real residual time estimation (A.R.T.E.). Turbo cooling function. Specific cycles for ice cream. Evaporator with antitrust protection. Digital temperature and time display. HACCP and Service alarms with data logging. Operating air temperature: +90 -12°C. For ambient temperatures up to 32°C. Cyclopentane insulation (HCFC, CFC and HFC free). R134a refrigerant gas (HCFC and CFC free).

Main Features

- Blast Chilling cycle: 28 kg from 90°C up to 3°C in less than 90 minutes.
- Soft Chilling (air temperature 0°C).
- Hard Chilling (air temperature -12°C).
- Holding at 3 °C for chilling, automatically activated at the end of each cycle, to save energy and maintain the target temperature (manual activation is also possible).
- Turbo cooling: chiller works continuously at the desired temperature; ideal for continuous production.
- Control unit provides two large displays to read out: time, core temperature, cycle countdown, alarms, service information.
- Two customizable cycles (P1 & P2) for each operating mode, allowing to set the time and air temperature. These programs can be converted into ice-cream specialized cycles (shape maintenance and holding).
- All information related to the different operating models are recorded: date, time, cycle, core temperature, holding temperature, HACCP accordance.
- Performance guaranteed at ambient temperatures of +32 °C.
- Probe-driven cycles feature ARTE (Algorithm for Remaining Time Estimation) to make planning the activities easier.
- Single sensor core probe as standard.

Construction

- High density polyurethane insulation, 60 mm thickness, HCFC free.
- Magnetic, easy-to-remove heated gaskets.
- 304 AISI stainless steel construction throughout.
- Seamless hygienic inner cell with all rounded corners for easy cleaning.
- Swing hinged front panel for easy service access to main components.
- Ventilator swinging hinged panel for access to the evaporator for cleaning.
- R134a gas in refrigeration circuit.
- No water connections required.
- Waste water can be plumbed into drain, but can also be collected in an optional waste container.

APPROVAL: _____



Electrolux

Blast Chillers CW Blast Chiller Crosswise - 28 kg

Included Accessories

- 1 of 1 extra single-sensor probe for blast chiller PNC 880213 and blast chiller&freezers

Optional Accessories

- Kit for HACCP advanced connection for LW and PNC 880183 ☐
CW blast chiller&freezer
- 3-sensor probe for blast chiller and blast chiller/ PNC 880212 ☐
freezers
- 1 extra single-sensor probe for blast chiller and PNC 880213 ☐
blast chiller&freezers
- Rilsan grid 600x400mm PNC 880864 ☐
- Plastic coated grid 1/1GN PNC 881061 ☐
- 4 wheels for blast chillers and blast chiller/ PNC 881097 ☐
freezers
- Roll-in guide runners for 28 kg blast chillers PNC 881518 ☐
and blast chiller&freezers 1/1GN
- Printer for HACCP basic version for self service PNC 881532 ☐
units
- Pair of 1/1GN AISI 304 stainless steel grids PNC 921101 ☐
- 80mm pitch side hangers 10x1/1GN electric PNC 922115 ☐
oven
- 80mm pitch side hangers 10x1/1GN gas oven PNC 922116 ☐
- 60mm pitch side hangers 10x1/1GN electric PNC 922121 ☐
oven (included with the oven)
- 60mm pitch side hangers 10x1/1GN gas oven PNC 922122 ☐
(included with the oven)
- Trolley for 10x2/1GN roll-in rack PNC 922128 ☐
- Trolley for 10x1/1GN roll-in rack PNC 922130 ☐
- Kit to convert to 10x1/1GN roll-in rack PNC 922201 ☐



**Blast Chillers CW
Blast Chiller Crosswise - 28 kg**

The company reserves the right to make modifications to the products without prior notice. All information correct at time of printing.

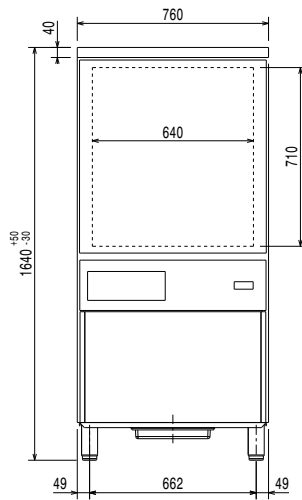
2014.06.23



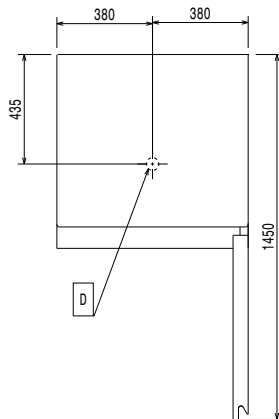
Electrolux

Blast Chillers CW Blast Chiller Crosswise - 28 kg

Front

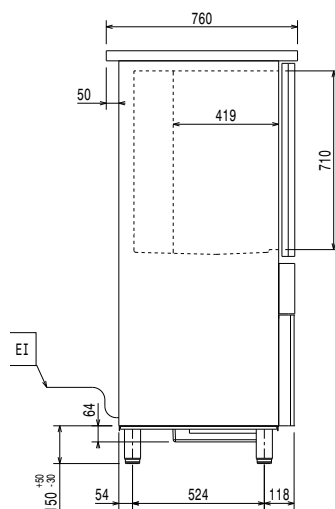


Top



- ED** = Remote electrical connection
- EI** = Electrical connection
- RO** = Refrigerant Outlet

Side



Electric

Supply voltage:

726622 (RBC101)

230 V/1N ph/50 Hz

Connected load:

1.198 kW

Circuit breaker required

Installation

Clearance:

5 cm on sides and back.

Please see and follow detailed installation instructions provided with the unit

Capacity

GN:

10 - 1/1 containers

Max load capacity:

28 kg

Key Information

| | |
|------------------------------------|---------------------|
| External dimensions, Height | 1640 mm |
| External dimensions, Width | 760 mm |
| External dimensions, Depth | 760 mm |
| Net weight: | 124 kg |
| Shipping weight: | 145 kg |
| Shipping volume: | 1.33 m ³ |

Refrigeration Data

| | |
|--------------------------------------------------------|--------|
| Refrigerant type: | R134a |
| Refrigeration power: | 1419 W |
| Refrigeration power at evaporation temperature: | -10 °C |
| Refrigerant weight: | 1530 g |

**Blast Chillers CW
Blast Chiller Crosswise - 28 kg**

The company reserves the right to make modifications to the products without prior notice. All information correct at time of printing.

2014.06.23

