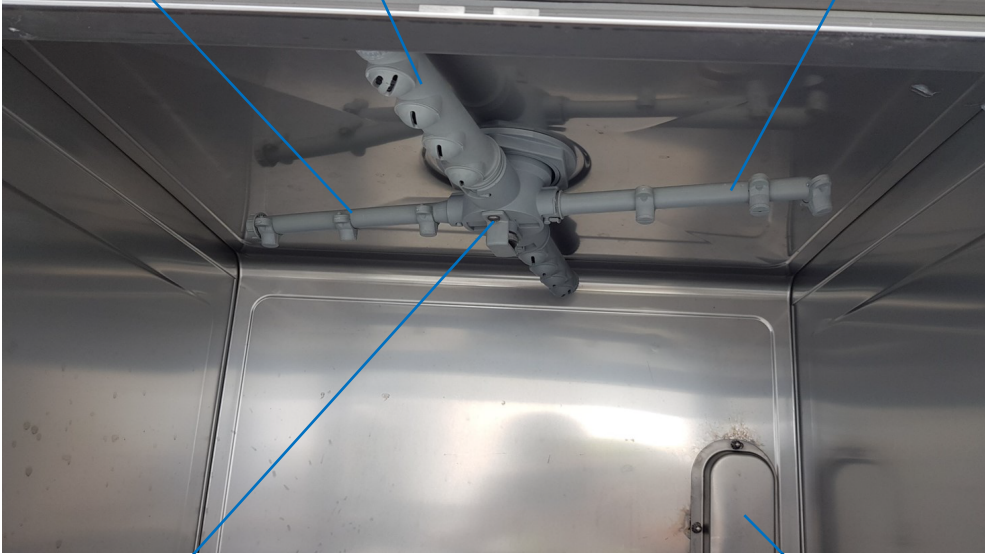


TOP

Rinse Short Arm
CKP9298

Wash Arm
CKP9297

Rinse long Arm
CKP9297



BOTTOM

Centre Boss
CKP9293

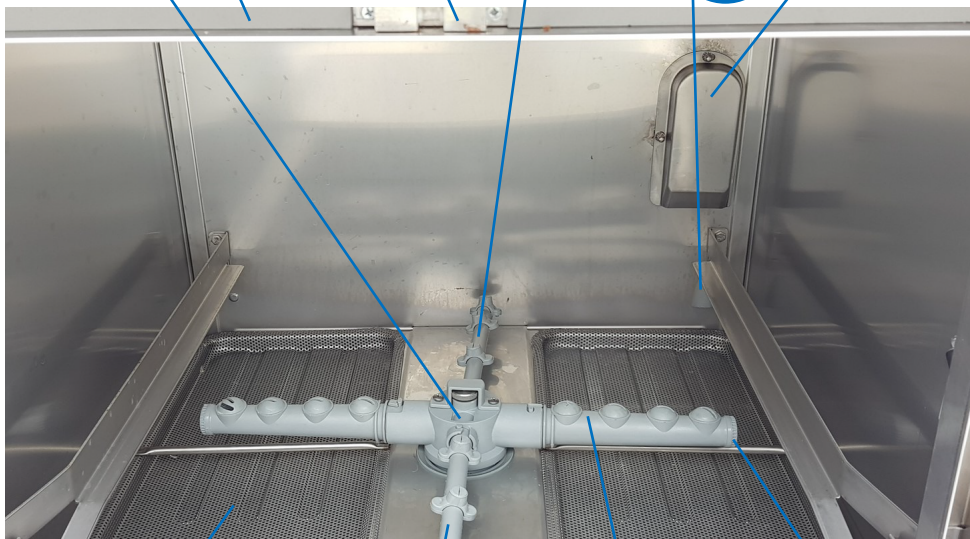
Door Seal
CKP6583

Door Catch
CKP9271
(Door stop CKP9536)

Rinse Short Arm
CKP9298

Air Chamber
CKP8853

Air Break cover
(ONLY ON CK1543)



Filter Tray
CKP4990

Rinse long Arm
CKP9297
(Rinse Arm Cap
CKP9299)

Wash Arm
CKP9297

Cap for Wash Arm
CKP9296

Temperature Probe

CKP9643

Air Trap

CKP8308

O-Ring

CKP2303



Plug

CKP0243

Filter

Wash tank Element

CKP2109

**O-Ring for
overflow pipe**

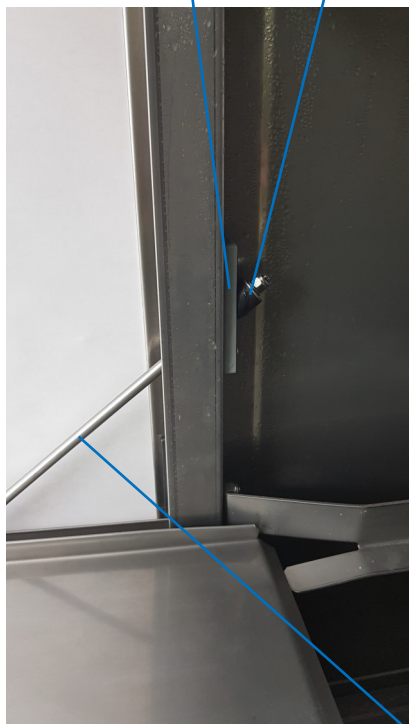
CKP0467

Shock Absorber

CKP9286

Door plate

CKP9285



Tie Rod

CKP9282



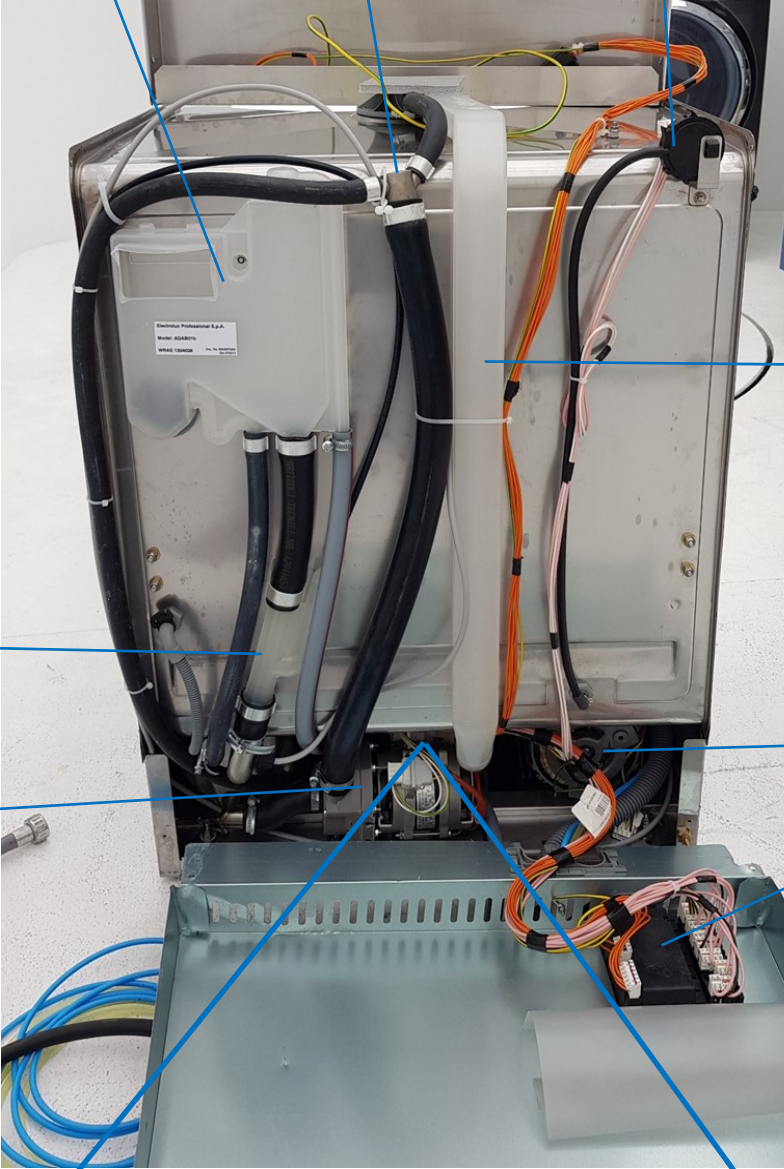
Door Hinge

Left CKP2251

Right CKP2253

4 Parts Locations – Door & Inside underneath Filter Tray

Break Tank 3 Way Connection Pressure Switch
CKP9881



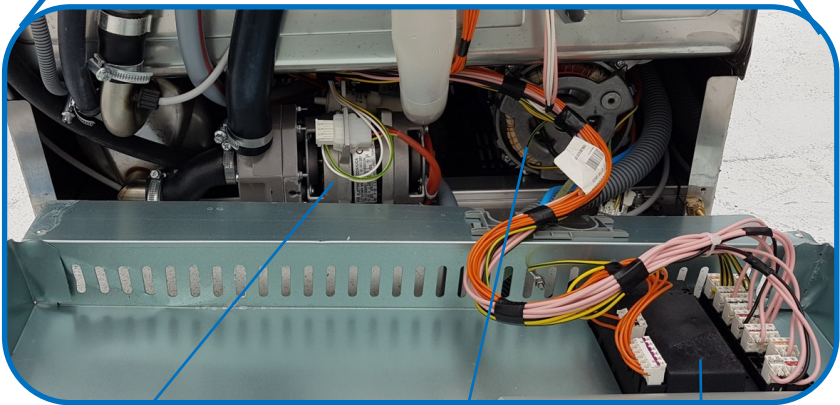
Pressure Bell

Rinse pump
CKP2597

Top Wash Piping

Wash Pump
CKP0126

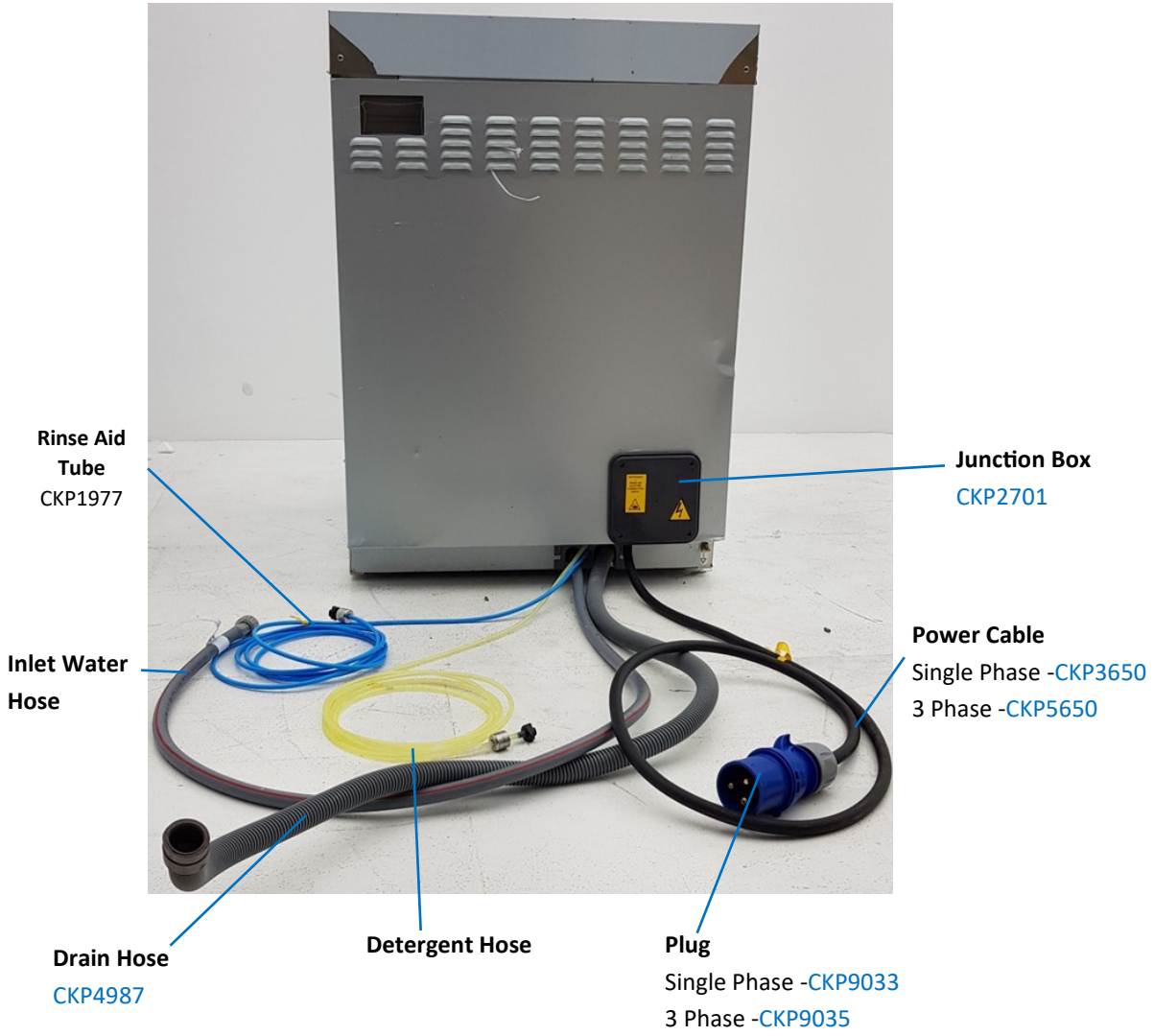
Terminal Board
CKP1110 -CK1543
CKP2701 -CK5502
& CK5001



Rinse Booster Pump
CKP2597

Wash Pump
CKP0126

Terminal Board
CKP1110 -CK1543
CKP2701 -CK5502 &
CK5001



Set up for Single Phase



Junction Box -

CK1543 -CKP1110

CK5502 & CK5001 -CKP2701

Be aware when switching to Single phase from 3 Phase you need to reduce power. This can be done by adding a hot water supply.

Cable Needed:

1m of 3core 6mm
Cable Rubber
Flexible 32A Black
CKP3650



Plug Needed: 32A
3PIN, Commando
Plug, BLUE
CKP9033



Socket needed:
IP44 Interlocked
Switch Socket



Set up for 3 Phase



Cable Needed:

1 Meter of 5
Core 6mm
Flexible Cable
CKP5650



**Plug need-
ed:** 32A 5 Pin
Commando Plug
Red IP44
CKP9035



Socket needed:
32A Three
Phase IP44
Gateway Socket
CKP3254

