

CATER-WASH

Warewashing Undercounter Dishwasher with pressure boiler, drain pump, detergent dispenser



Warewashing

Undercounter Dishwasher with pressure boiler, drain pump, detergent dispenser

CK5001

Undercounter dishwasher, single skin with pressure boiler, drain pump, detergent and rinse aid dispenser, 230V/1N/50Hz

Short Form Specification

Item No.

Undercounter type hot water rinsing dishmachine with pressure boiler. Electrical characteristics to be ___230 volts one phase operation with two wash cycles of 120/180 seconds for normal or heavily soiled items. Rinse temperature and pressure guaranteed by built in pressure boiler. Washing performance is guaranteed by a powerful wash pump, upper and lower revolving washing spray arms. 304 Stainless steel construction to include door, frame and wash tank. The unit shall include drain pump, detergent and rinse aid dispenser pump.

Main Features

- Built-in pressure boiler sized to raise incoming 50 °C water to guarantee a minimum rinsing temperature of 82 °C for sanitizing rinse. No external booster is required.
- Incorporated Soft Start feature to offer additional protection to more delicate items.
- Washing system endowed with rotating washing arms, high powered wash pump and large capacity boiler for professional washing.
- 4 second (variable) pause after washing and before rinsing ensures that no drops of unclean water will fall on the clean items at the end of the rinsing cycle.
- 120/180 seconds cycle.
- Easy to remove wash/rinse arms.
- Simple control panel with digital display allows on-site personalization of washing and rinsing cycle times and temperatures as well as precise rinse aid and detergent quantities to suit customer's needs.
- Equipped with drain pump for easy and quick installation without opening the machine.
- Equipped with single plate electrical cable and UK plug for easy and fast installation.
- Fully automatic self-cleaning cycle avoids the risk of bacteria proliferation.
- IPX 4 water protection.
- Pre-arrangement for HACCP system implementation and Energy Management device.
- Simple service from the front.
- WRAS approved product.

Construction

- Single phase electrical connection.
- Front and side panels, door and wash tank made in heavy duty anti-corrosive AISI 304 stainless steel.
- Completely closed on the back by a cover plate.
- 304 stainless steel boiler with higher welding protection to increase resistance to corrosion.
- PVC water supply hose with metal connections resistant to high water pressure.
- Unit to feature smooth surfaces to facilitate cleaning.

APPROVAL: _____



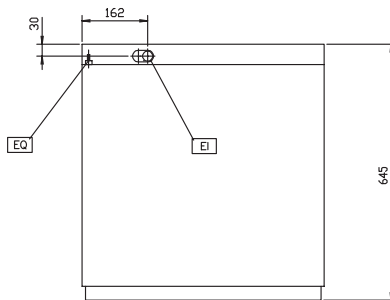
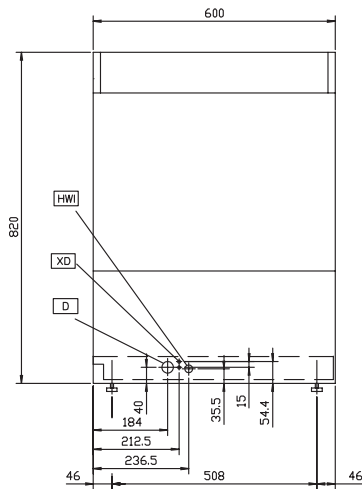
Included Accessories

- 1 of YELLOW CUTLERY CONTAINER PNC 864242
- 1 of BASKET FOR 18 DINNER PLATES 240MM-YELLOW PNC 867002
- 1 of BASKET FOR 48 SMALL CUPS/24 CUPS-BLUE PNC 867007

Optional Accessories

- 12 L EXTERNAL MANUAL WATER SOFTENER PNC 860412
- 8 L EXTERNAL AUTOMATIC WATER SOFTENER PNC 860413
- STAND FOR UNDERCOUNTER DISHWASHER PNC 860418
- 20 L EXTERNAL MANUAL WATER SOFTENER PNC 860430
- INTEGRATED HACCP KIT FOR UC, HT AND POTW PNC 864001
- HACCP PRINTER KIT FOR UC, HT AND POTW PNC 864002
- DETERGENT LEVEL PROBE KIT FOR UC+HT DW PNC 864004
- RINSE AID LEVEL PROBE KIT FOR UC+HT DW PNC 864005
- DRAIN PUMP KIT FOR 50HZ DISHWASHERS PNC 864012
- FILTER FOR PARTIAL DEMINERALIZATION PNC 864017
- KIT TO MEASURE TOTAL/PART.WATER HARDNESS PNC 864050
- RINSE BOOSTER PUMP-SING.TANK PRESSURE DW PNC 864051
- S/S WASH TANK FILTER KIT-UNDERC.ENTRY DW PNC 864222
- YELLOW CUTLERY CONTAINER PNC 864242
- 304 AISI BACK PANEL FOR UC ENTRY LEVEL PNC 864246
- FILTER FOR TOTAL DEMINERALIZATION PNC 864367
- HALF SIZE BASKET-UNIVERSAL-500X250MM PNC 864527
- HALF SIZE BASKET FOR PLATES-500X250MM PNC 864528
- HALF SIZE BASKET FOR GLASSES-500X250MM PNC 864529
- KIT 4 PLASTIC BOXES FOR CUTLERY-YELLOW PNC 865574
- BASKET FOR 18 DINNER PLATES 240MM-YELLOW PNC 867002
- BASKET FOR 48 SMALL CUPS/24 CUPS-BLUE PNC 867007
- COVER GRID FOR SMALL/LIGHT ITEMS IN RACK PNC 867016
- BASKET F.16 VERTIC.GLASSES (H70MM)-BLUE PNC 867023

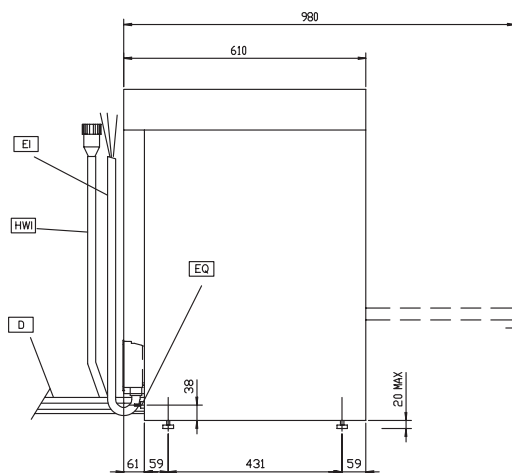
Front



- D** = Drain
- EI** = Electrical connection
- EO** = Electrical Outlet
- EQ** = Equipotential screw
- HWI** = Hot water inlet
- V** = Air vents
- XD** = Detergent connection
- XR** = Rinse aid connection

Top

Side



Electric

Supply voltage:	230 V/1N ph/50 Hz
ck5001: Total Watts:	2.35 kW
Boiler heating elements:	1.5 kW
Tank heating elements:	2 kW
Wash pump size:	0.736 kW

Water:

Water supply temperature:	50 °C
Inlet Water supply pressure:	29 - 44 psi (2 - 3 bar)
Boiler Capacity (lt):	5.8
Tank Capacity (lt):	33
Drain line size:	20.5 mm
Hot rinse cycle duration (sec.):	16
Hot rinse cycle water consumption (lt):	3.3

Key Information:

N° of working cycles - sec.:	2 (120/180)
Baskets per hour:	30
Dishes per hour:	540
Wash temperature (MIN):	55-65°C
Rinse temperature (MIN):	80-90 °C
External dimensions, Height:	820 mm
External dimensions, Width:	600 mm
External dimensions, Depth:	610 mm
Shipping height:	1020 mm
Shipping width:	670 mm
Shipping depth:	740 mm
Noise level:	<70 dBA
Cell dimensions - width:	500 mm
Cell dimensions - depth:	500 mm
Cell dimensions - height:	330 mm