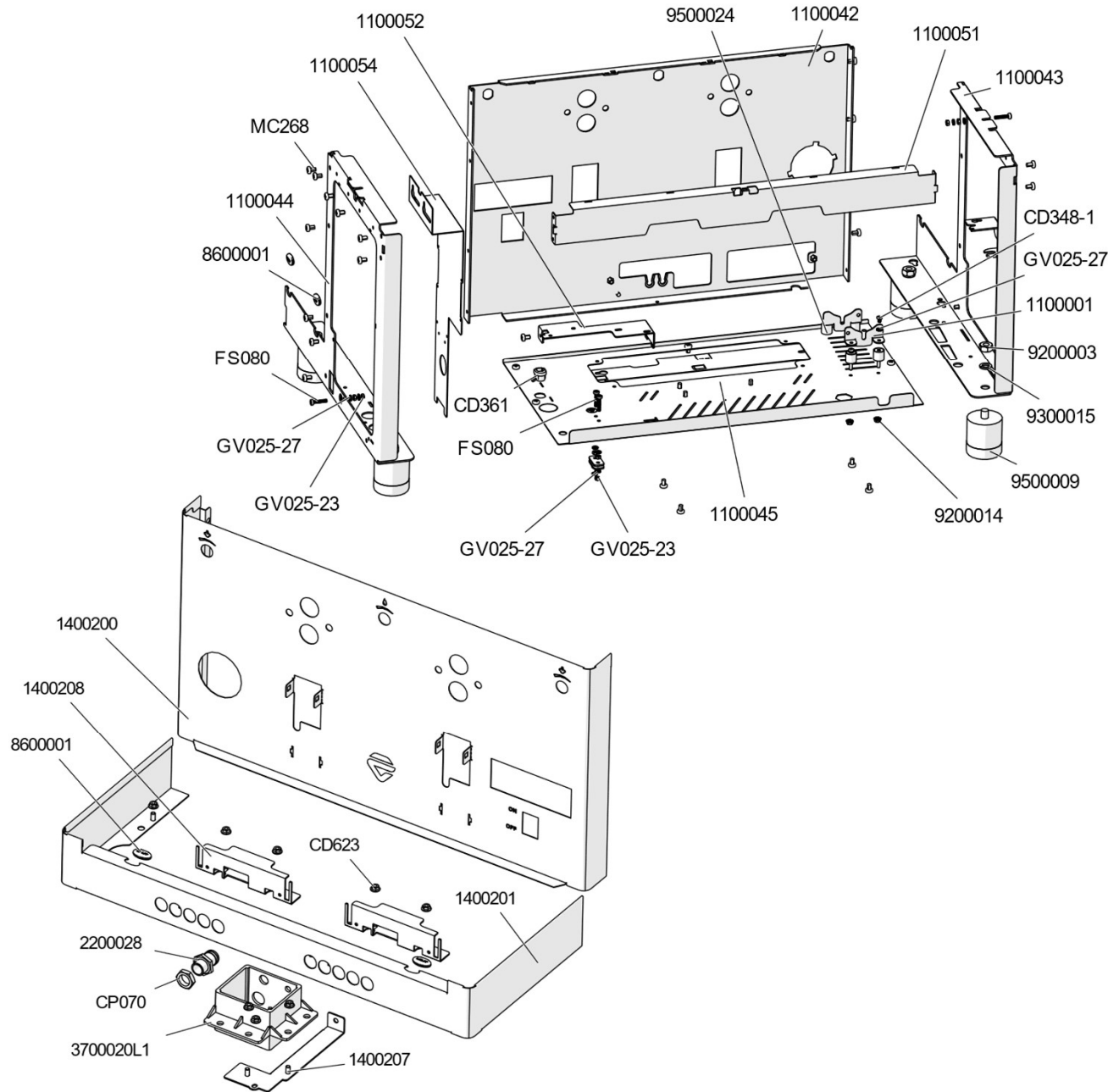


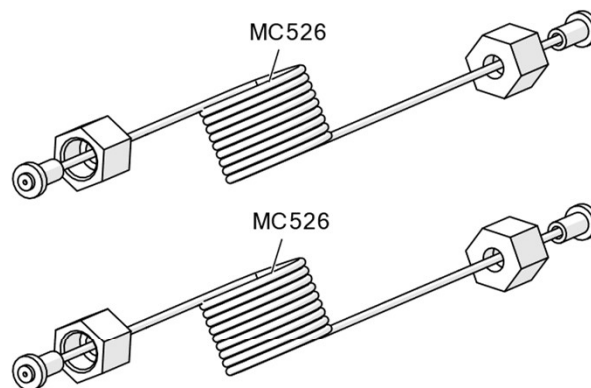
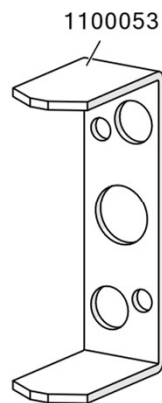
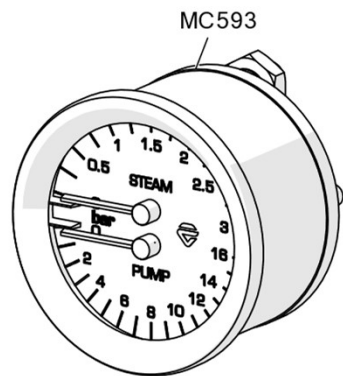
## Giuletta PL2SVX-UK

### Technical Documentation

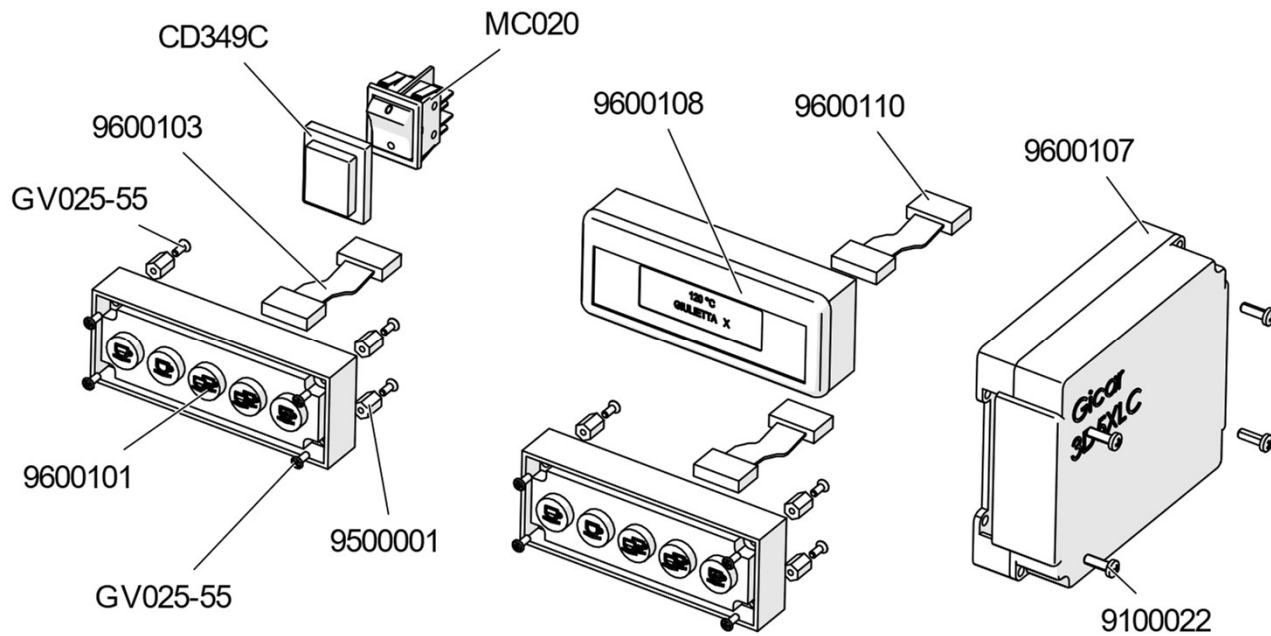
COD. 5200032TC



CODE	DESCRIPTION
1100001	SUPPORT FOR ROTATIVE PUMP MOTOR
1100042	VERTICAL PANEL
1100043	LEFT SIDE APPLIANCE BODY PL2SVX
1100044	RIGHT SIDE APPLIANCE BODY PL2SVX
1100045	APPLIANCE BODY BASE PL2SVX
1100051	CROSSBAR BODY PL2SVX
1100052	VOLUMETRIC METER
1100054	SUPPORT BRACKET PL2SVX
1400200	INSPECTION COVER
1400201	CONTROL TRAY BAND PL2SVX
1400207	BRACKET FOR DISCHARGE TRAY PL2SVX
1400208	BRACKET FOR PUSHBUTTONS PANEL PL2SVX
2200028	HOSE CONNECTOR FOR DRAIN TRAY
3700020L1	TRAY FOR LIQUID CAPTURE WITH HOLE
8600001	BLACK SILICONE RUBBER
9200003	NUT M10 UNI EN ISO 4032 CL 8 ZB
9200014	NUT M4 DIN6923 ZB INOX
9300015	WASHER GROWER M10 UNI 1751 ZNB
9500009	INOX FOOT Diam.50 H55
9500024	ANTI-VIBRATION M4
CD348-1	SCREW FOR BULB THERMOSTAT TC 7.7+01 4x6 7985
CD361	BLOCK FAIRLEAD
CD623	NUT M5
CP070	3/8" FERRULE
FS080	SCREW M4*25
GV025-23	NUT 4MA 5588 ZNB
GV025-27	WASHER D4 UNI8842
<b>MC268</b>	<b>SCREW M5x8</b>

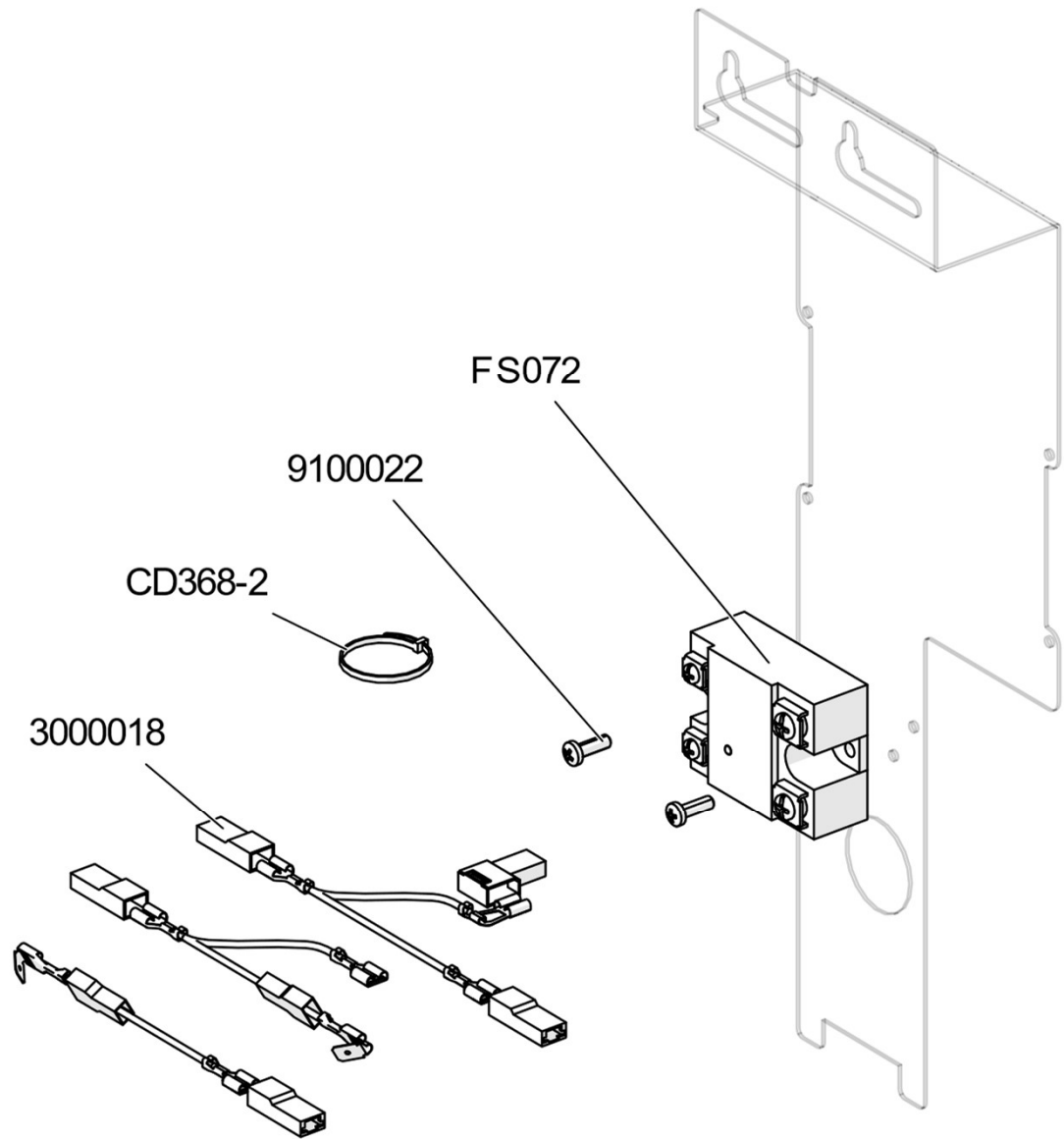


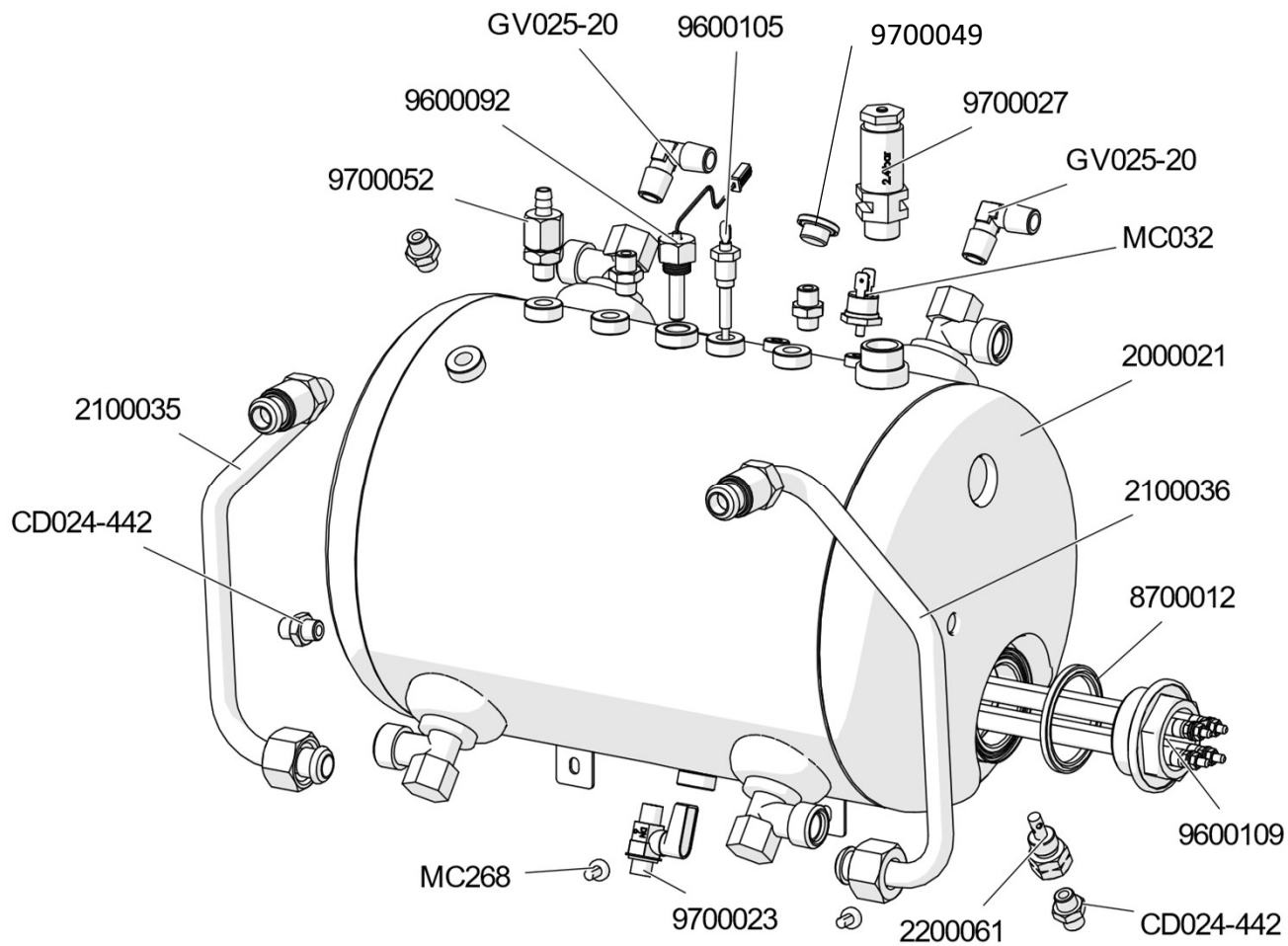
CODE	DESCRIPTION
1100053	BRACKET FOR FIXING THE MANOMETER
MC526	CAPILLARY I.800
MC593	DOUBLE MANOMETER FOR PUMP/STEAM PRESSURE



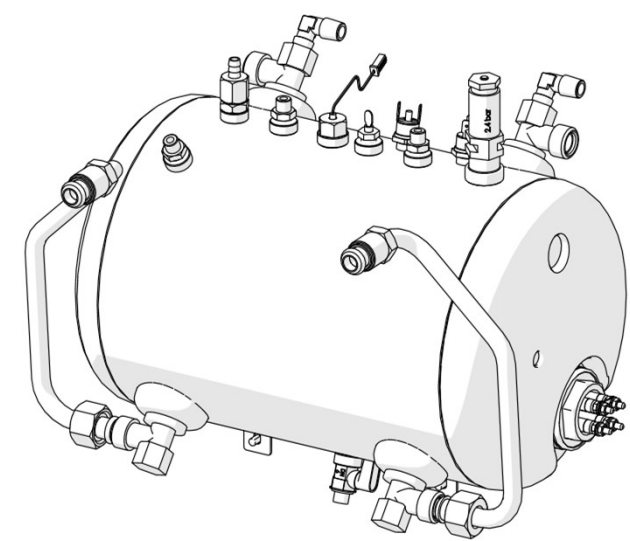
CODE	DESCRIPTION
9100022	SCREW 4Mx6 FOR FIXING THE THERMOSTAT
9500001	SPACER NICKEL BRASS FF M3 CH5 L10
9600101	5 SWITCHES PANEL
9600103	FLAT WIRE 16 POLES L=1250
9600107	ELECTRONIC CARD PL2SVX
9600108	DISPLAY PL2SVX
9600110	FLAT PIN TO PIN
CD349C	SWITCH COVER
GV025-55	SCREW FOR GLASS INDICATOR 3MA FOR 025/026 TGS3X8 ZNB +FE
<b>MC020</b>	<b>RED LED BIPOLAR SWITCH</b>

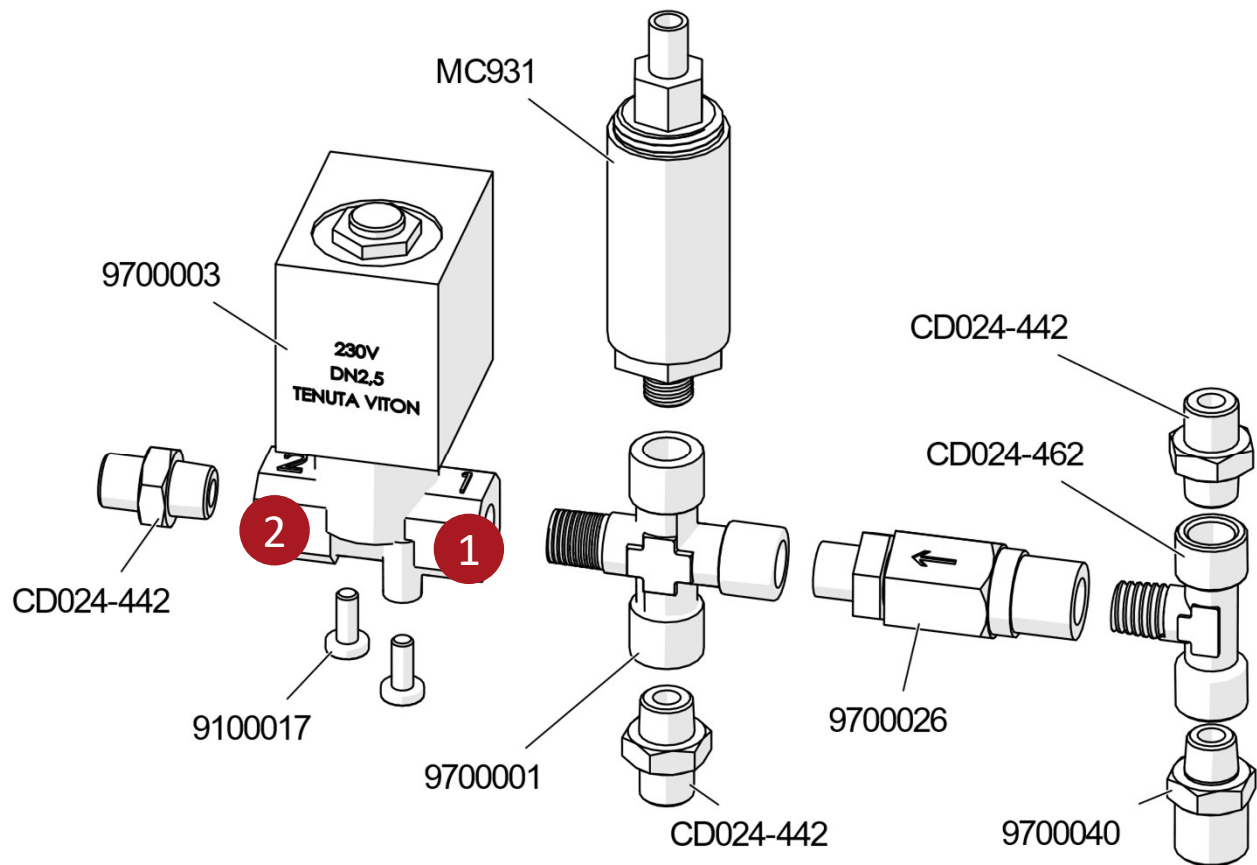
CODE	DESCRIPTION
3000018	WIRING PL2SVX
9100022	SCREW 4Mx6 FOR FIXING THE THERMOSTAT
CD368-2	WHITE CLAMP FOR SPRING
<b>FS072</b>	<b>STARTER</b>





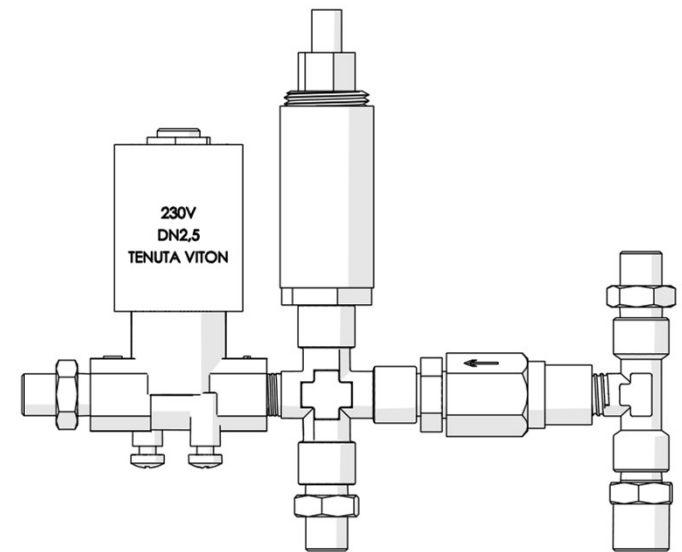
CODE	DESCRIPTION
2000021	BOILER 10LT PL2SVX
2100035	LEFT LOWER TUBE - HX PL2SVX
2100036	RIGHT LOWER TUBE - HX PL2SVX
2200061	WATER INJECTOR
8700012	GASKET 1" 1/4 FLAT
9600092	TEMPERATURE PROBE
9600105	LEVEL PROBE 85MM
9600109	HEATING ELEMENT 230/240V 2000+500W PL2SVX
9700023	TAP MM 1/8
9700027	SAFETY VALVE 3/8G 2,4bar
9700049	MALE CAP WITH VITON OR
9700052	ANTI VACUUM VALVE
CD024-442	NIPPLE JOINT
GV025-20	L JOINT M1/4 - M1/4
MC032	MANUAL REARM BIMETALLIC THERMOSTAT165°
<b>MC268</b>	<b>SCREW M5x8</b>

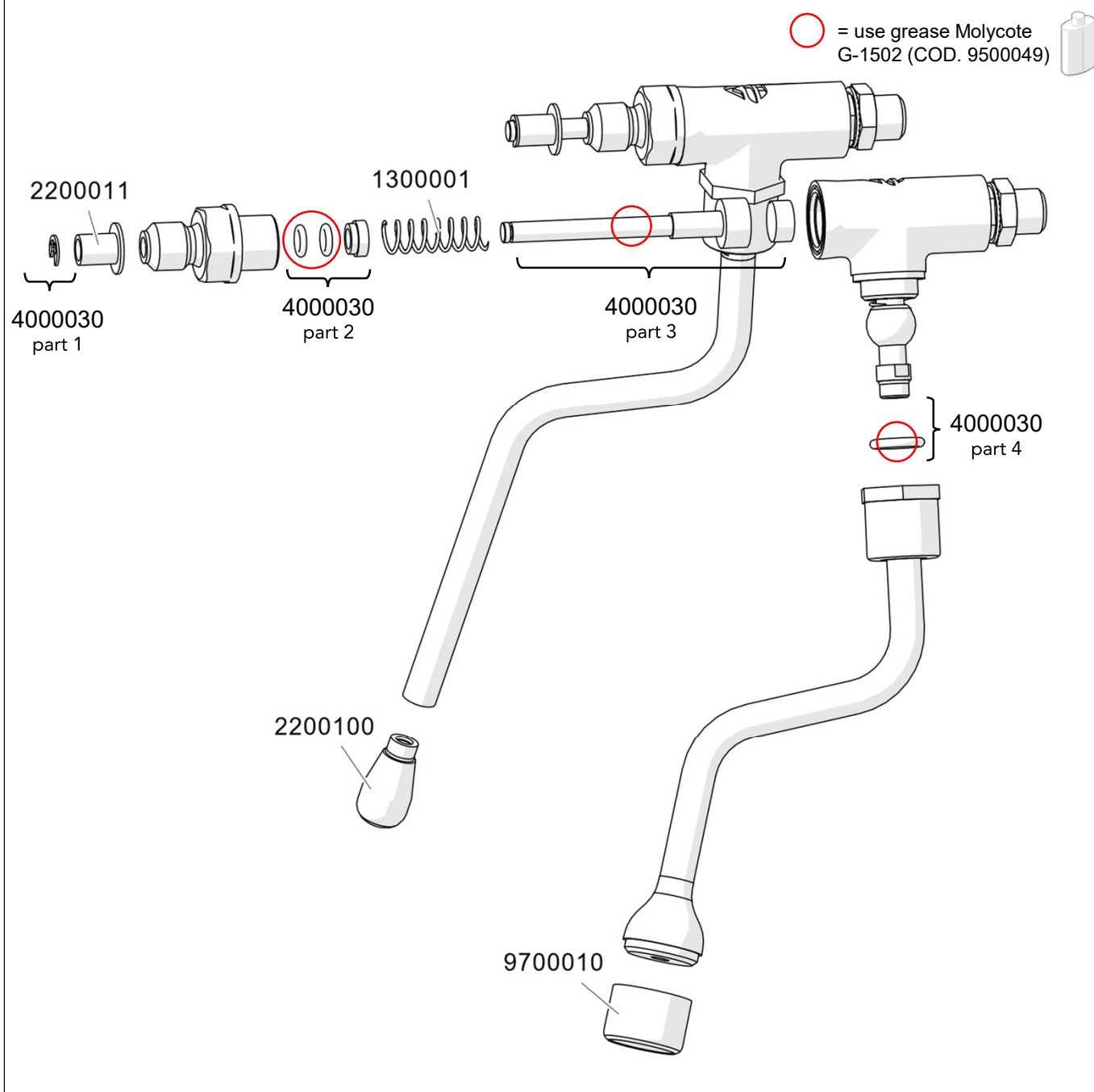




NB: please pay attention to the numbers (1 and 2) and the arrow marked on the body of the valves, and reassemble the valves following the direction indicated in the image.

CODE	DESCRIPTION
9100017	SCREW M4x10 UNI7687 4.8
9700001	CROSS JOINT M/F/F/F 1/8
9700003	SOLENOID VALVE 2V 230V VITON - SIRAI
9700026	NO RETURN VALVE TEFLON
9700040	NIPPLE FITTING
CD024-442	NIPPLE JOINT
CD024-462	T JOINT 1/8
<b>MC931</b>	<b>ADJUSTABLE OVERPRESSURE VALVE</b>

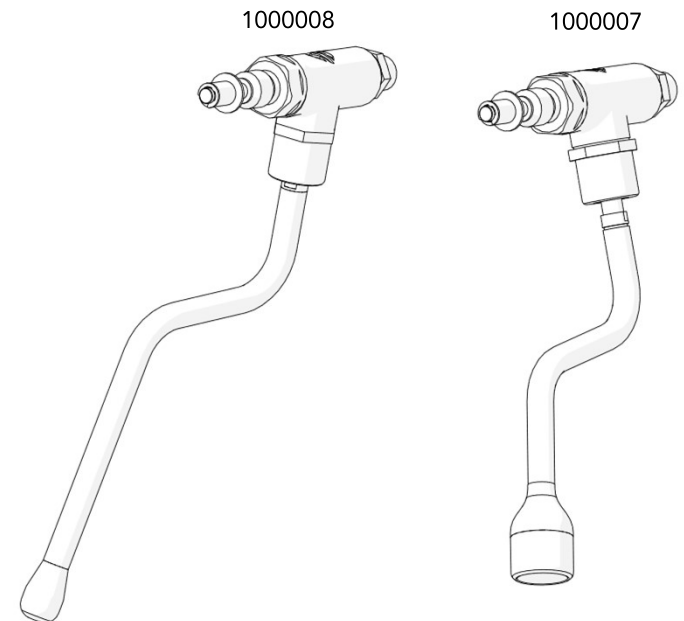




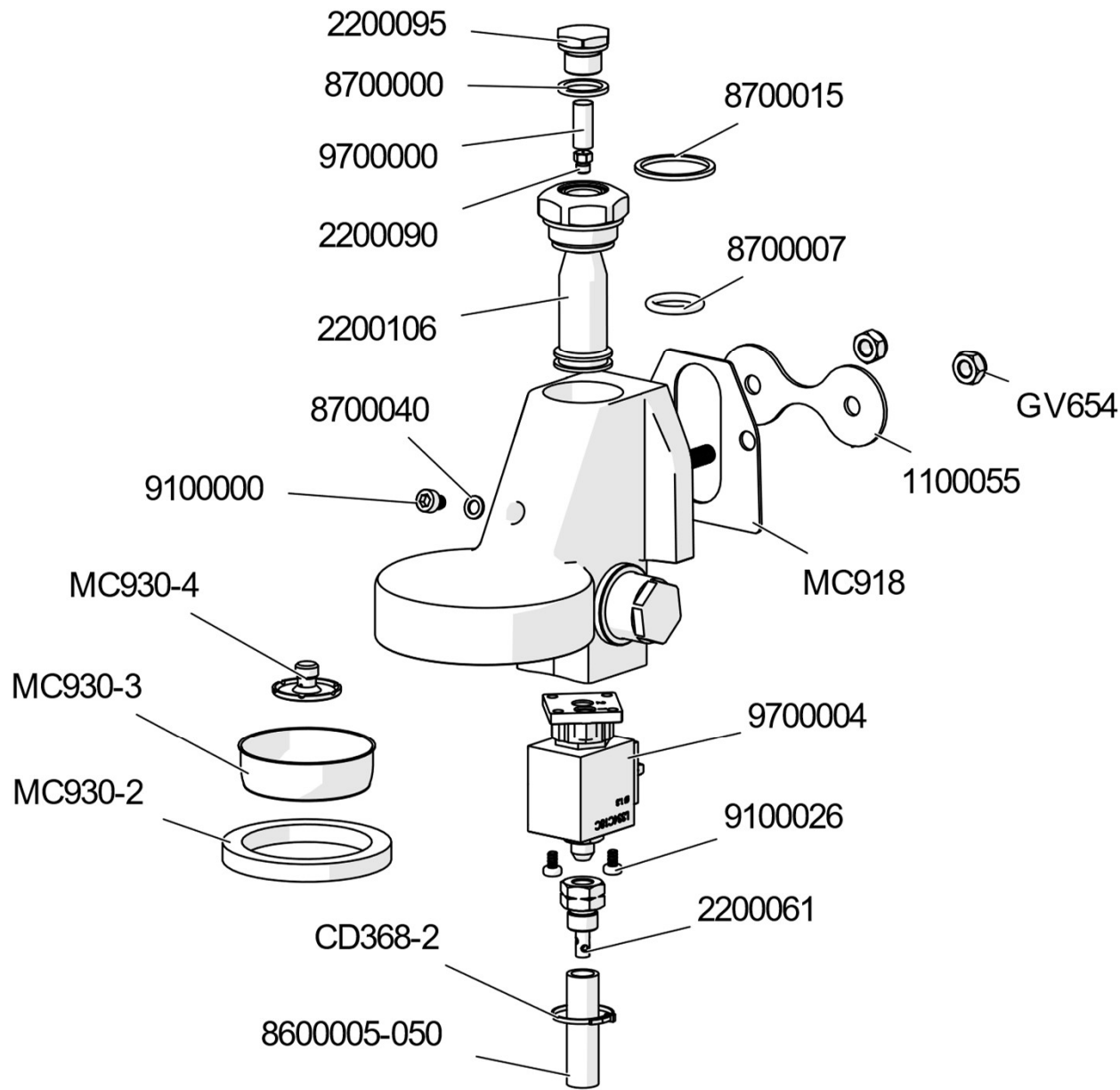
CODE	DESCRIPTION
1000007	WATER TAP WITH SPRING CLOSURE
1000008	STEAM TAP WITH SPRING CLOSURE
1300001	SPRING FOR TAP ON PL6
2200100	NOZZLE WITH 2 HOLES Øi1 30°
9700010	HOT WATER FILTER
2200011	SPACER
<b>4000030</b>	<b>SPARE KIT WATER/STEAM TAP 1000007-1000008</b>

ATTENTION! The components enclosed in brackets are part of a reset kit for wand (code 4000030). They cannot be ordered individually like the other components, but you must buy the entire kit must (part1 + part2 + part3 + part4).  
1 kit contains the spare parts for 1 wand reset.

ASSEMBLY CODES

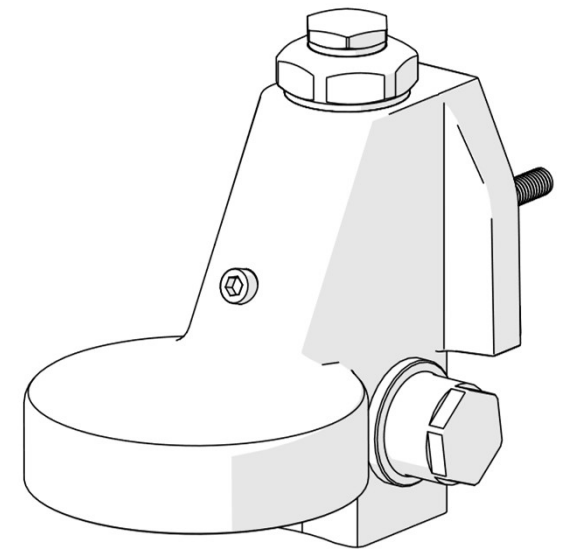






CODE	DESCRIPTION
1100055	PLATE
2200061	WATER INJECTOR
2200090	NOZZLE
2200095	CAP M16x1,5 – L58E GROUP
2200106	UPPER STEERER FOR L58E GROUP
8600005-050	SILICONE TUBE 10X14 L5CM
8700000	PTFE GASKET 22x17x2
8700007	GASKET ON WATER DISPENSER Diam.20,5
8700015	PTFE 35x30x2 GASKET
8700040	GASKET PTFE 10x6x1
9100000	SCREW TCEI M6x8 UNI EN 4762 (inox A2)
9100026	SCREW TCBIC M4x10 UNI 7687 INOX
9700000	UPPER FILTER FOR GROUP MC930
9700004	3 WAY SOLENOID VALVE 230V - SIRAI - DIAM 1.3
CD368-2	WHITE CLAMP FOR SPRING
GV654	SELFBLOCKING NUT 8MA ZNB
MC918	GASKET FOR L58E GROUP
MC930-2	GROUP GASKET FOR L58E GROUP
MC930-3	SHOWER FILTER
MC930-4	SPRAYER DIAM. 30
<b>MC930V</b>	<b>L58E GROUP</b>


ASSEMBLY CODE : MC930V




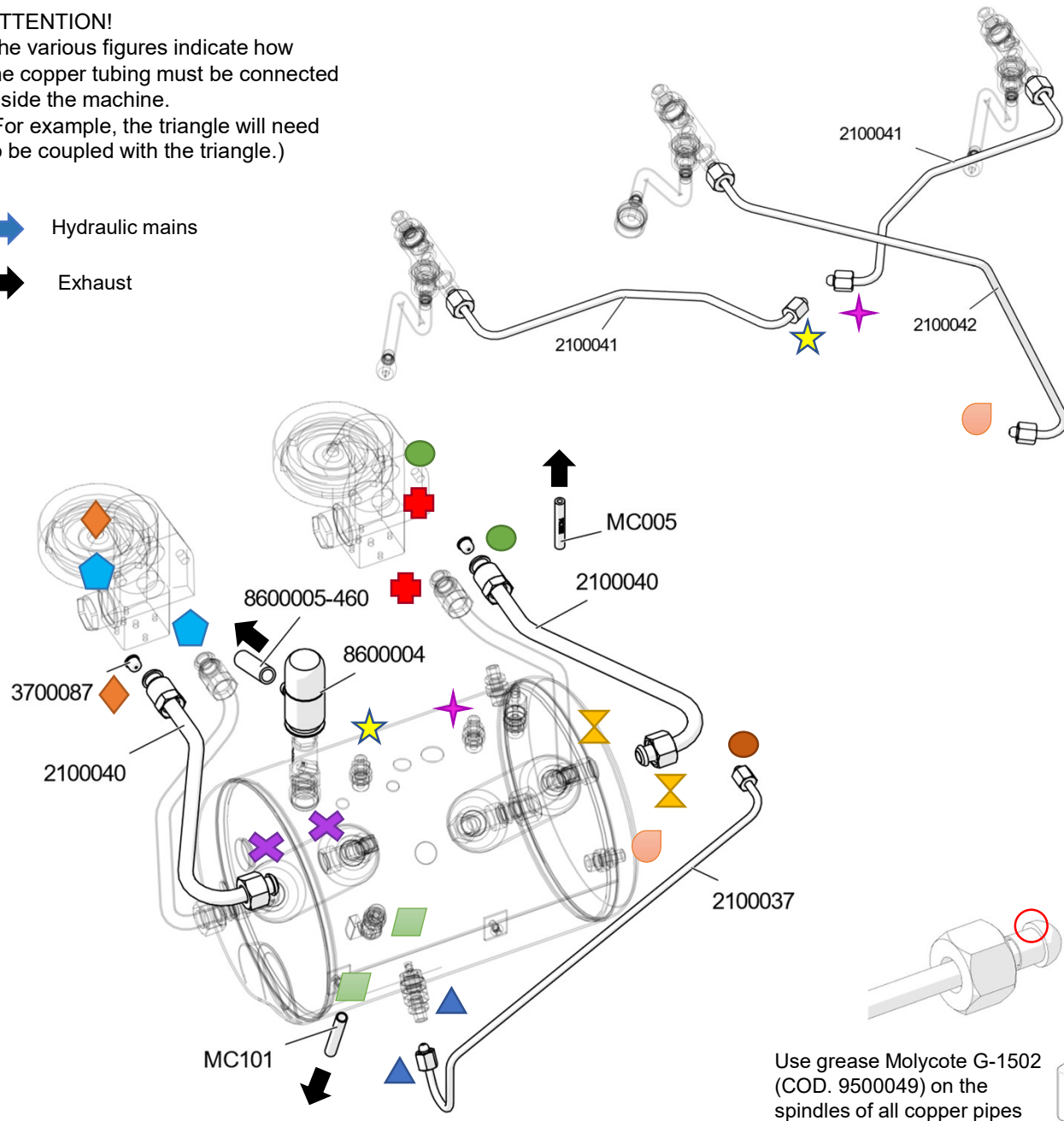
**ATTENTION!**

The various figures indicate how the copper tubing must be connected inside the machine.

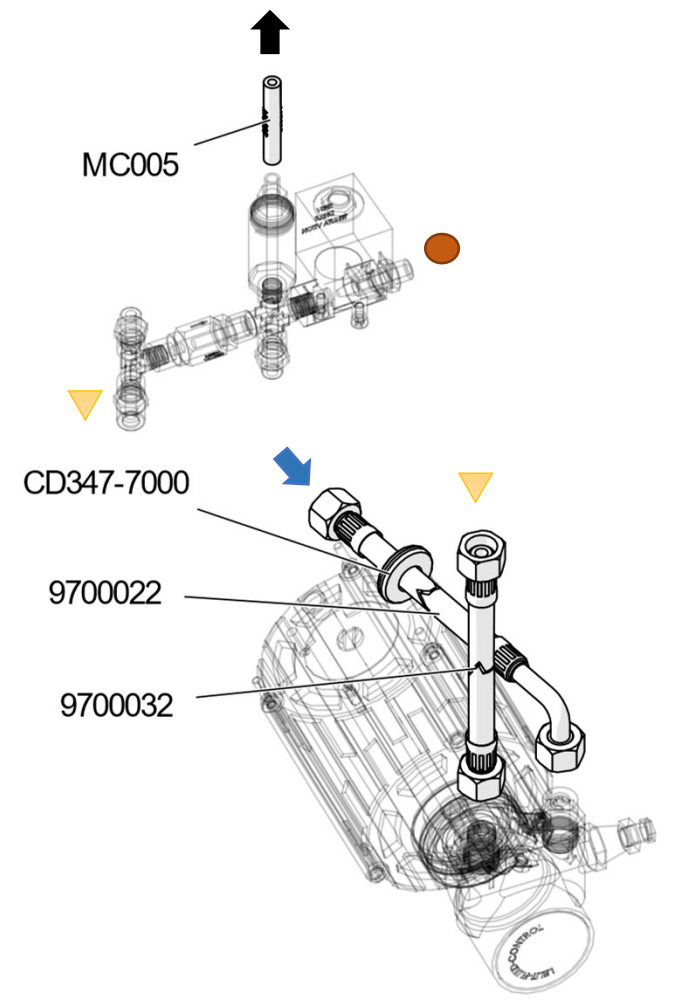
(For example, the triangle will need to be coupled with the triangle.)

 Hydraulic mains

 Exhaust

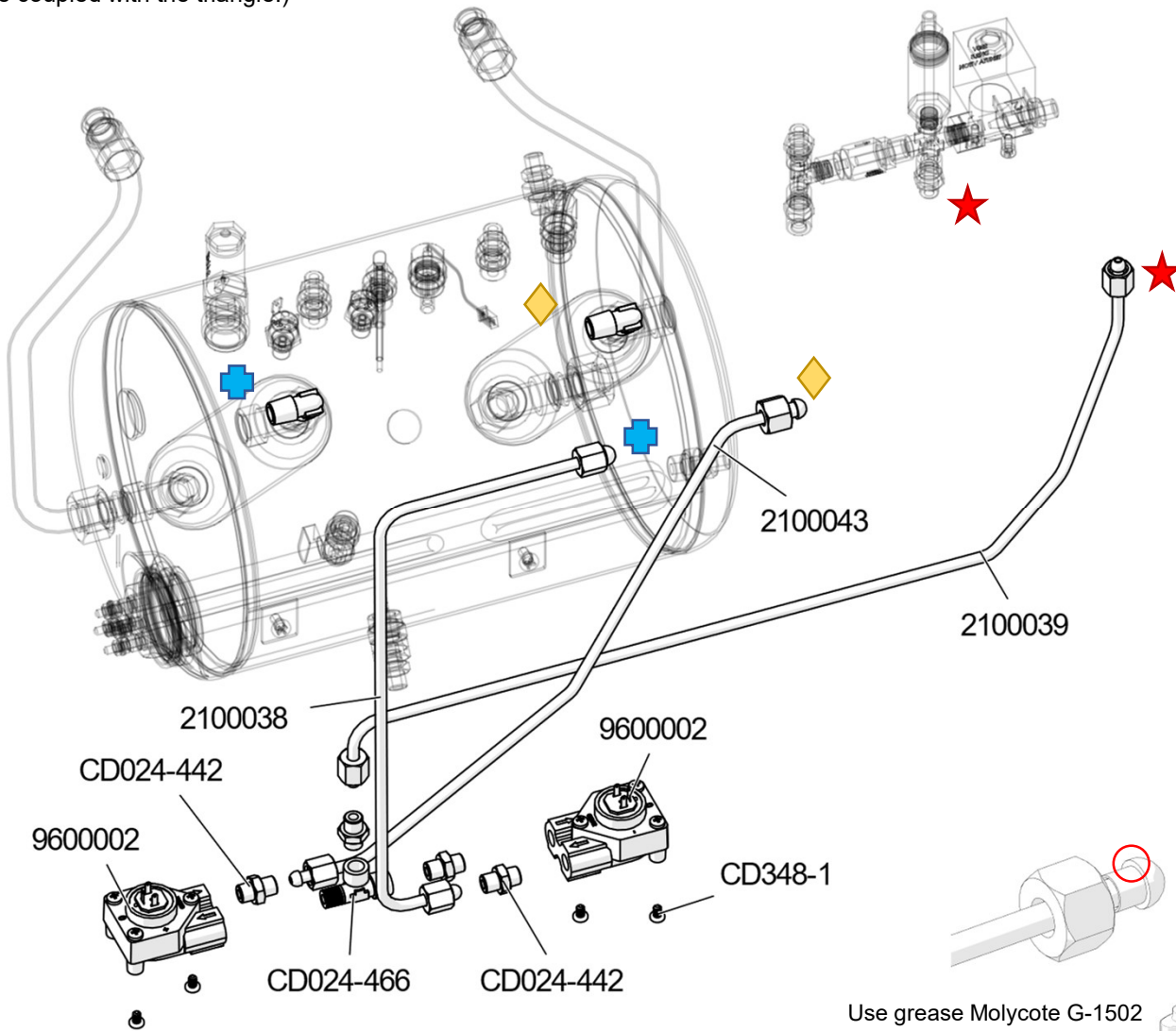


CODE	DESCRIPTION
2100037	WATER CHARGE S.V. - BOILER PL2SVX
2100040	UPPER TUBE FOR HX PL2SVX
2100041	STEAM TUBE PL2SVX
2100042	WATER TUBE PL2SVX
3700087	NOZZLE PTFE DIAM. 1,9
8600004	PROTECTION FOR SAFETY VALVE/ANTIVACUUM
8600005-460	SILICONE TUBE 10X14 L46CM
9700022	REINFORCED ELBOW TUBE 3/8G L=1500
9700032	COATED PIPE 1/4G L= 325
CD347-7000	FAIRLEAD FOR SOLENOID VALVE RB48 D.14
MC005	SILICONE HOSE 4X8 L42CM
<b>MC101</b>	<b>SILICONE HOSE 6X9 40CM</b>



**ATTENTION!**

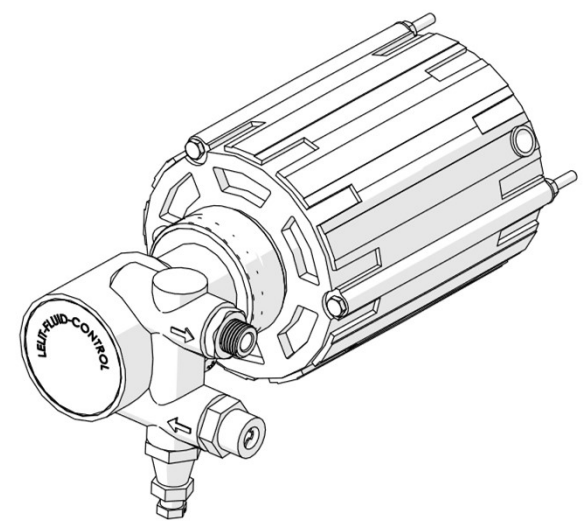
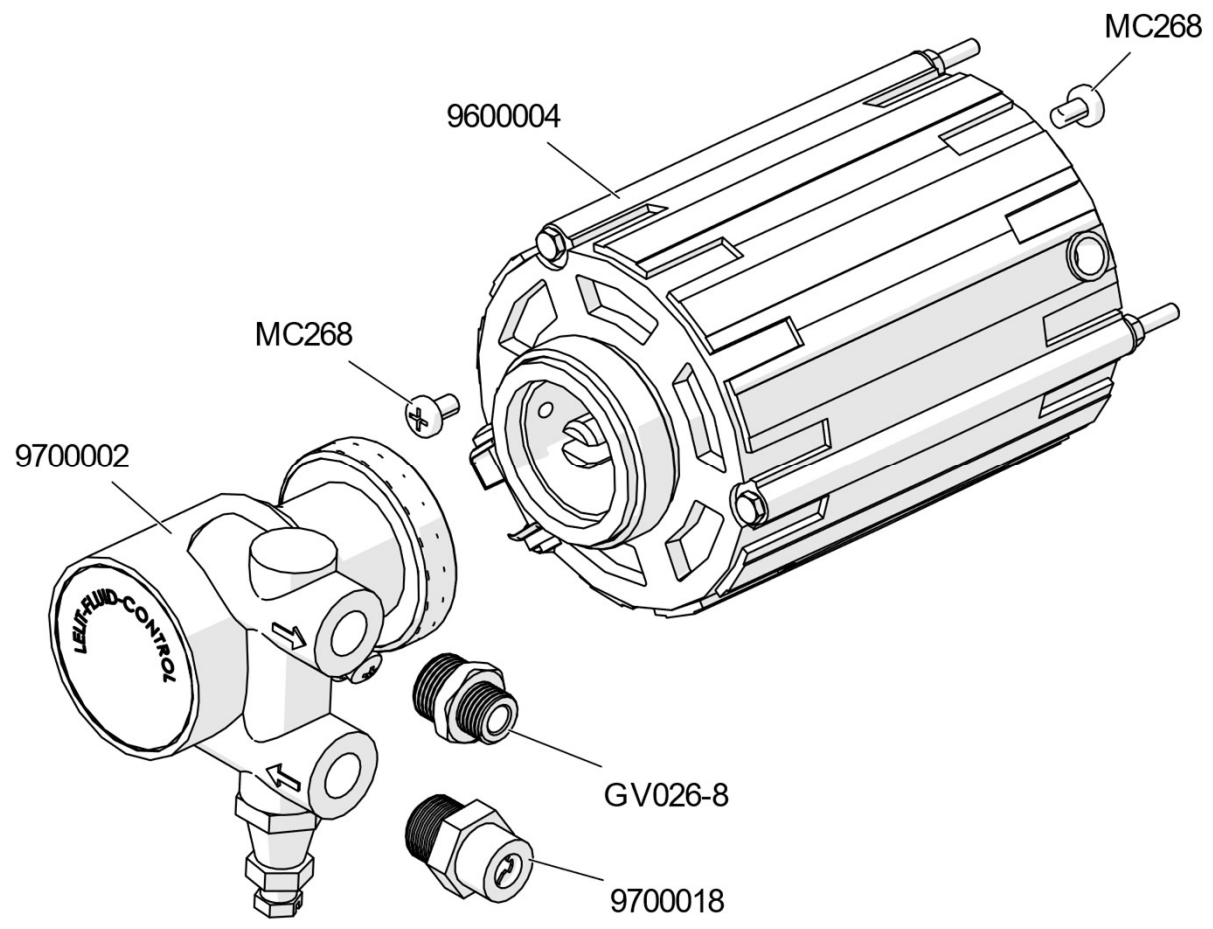
The various figures indicate how the copper tubing must be connected inside the machine.  
(For example, the triangle will need to be coupled with the triangle.)

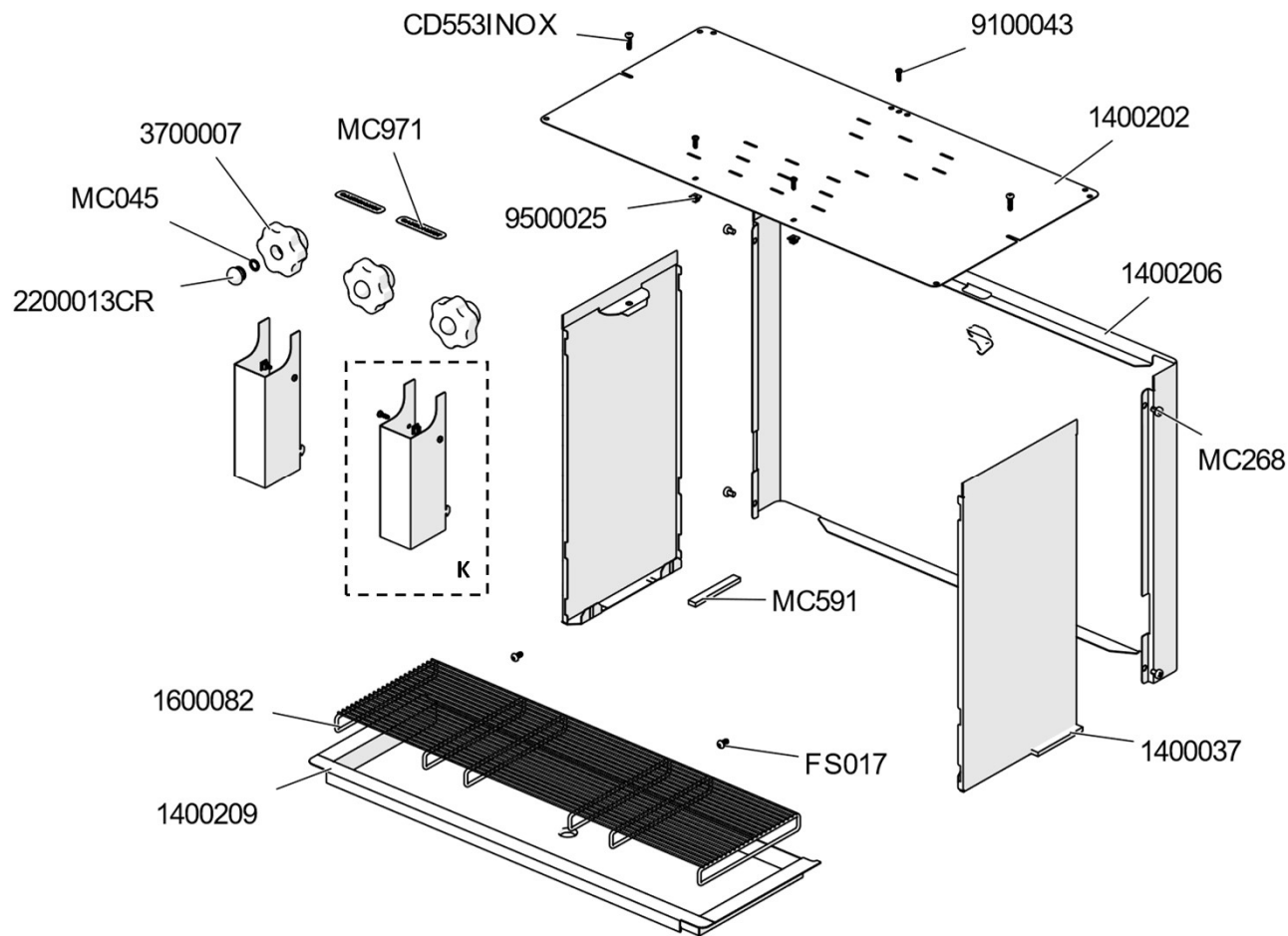


Use grease Molycote G-1502 (COD. 9500049) on the spindles of all copper pipes

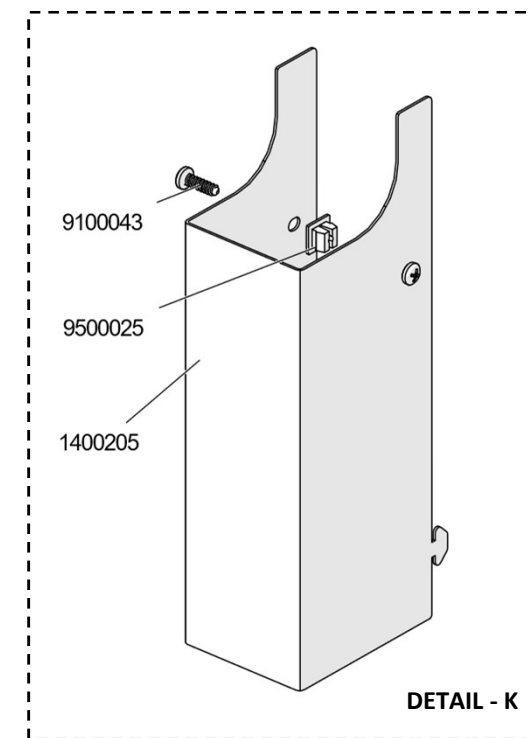
CODE	DESCRIPTION
2100038	TUBE - HX 2nd GROUP
2100039	WATER CIRCUIT TUBE - PL2SVX
2100043	TUBE - HX 1st GROUP
9600002	GICAR VOLUMETRIC METER
CD024-442	NIPPLE JOINT
CD024-466	T JOINT 1/8
<b>CD348-1</b>	<b>SCREW FOR BULB THERMOSTAT TC 7.7+01 4x6 7985</b>

CODE	DESCRIPTION
9600004	PUMP MOTOR 150W 230V 50/60Hz UL
9700002	ROTATIVE PUMP NSF 50L/h
9700018	3/8G WATER INLET FILTER F/ROTATIVE PUMP
GV026-8	REDUCTION 3/8 M 1/4 M
<b>MC268</b>	<b>SCREW M5x8</b>

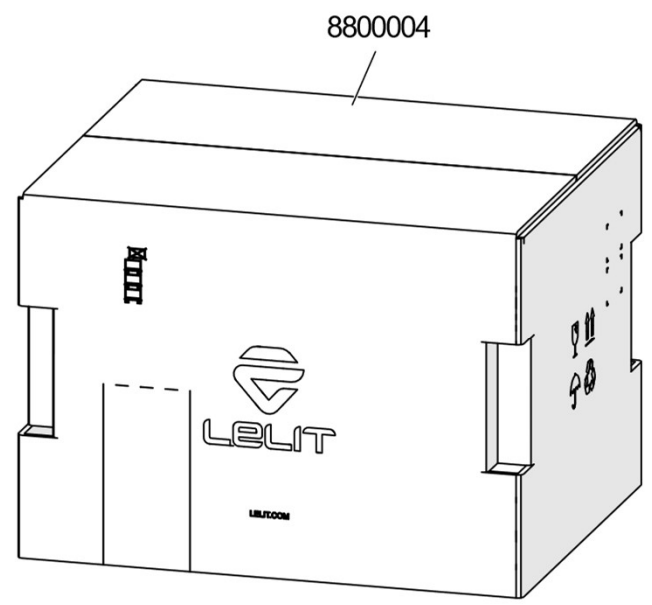
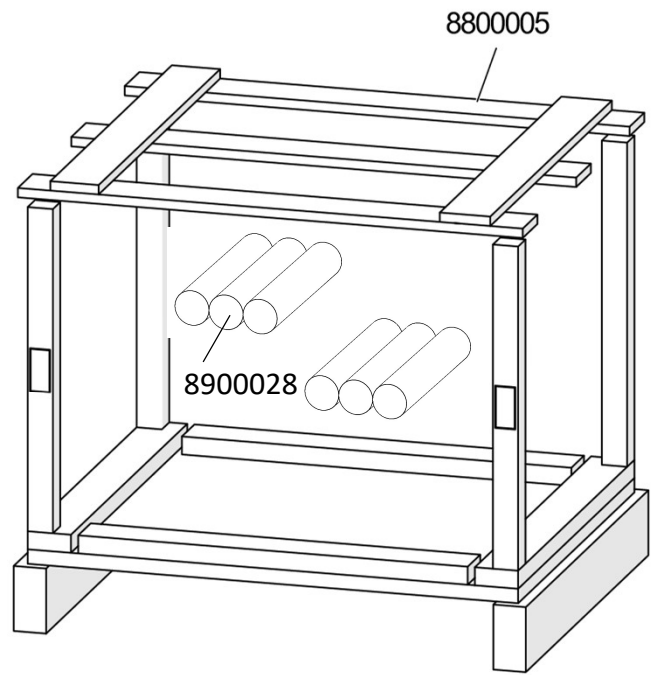




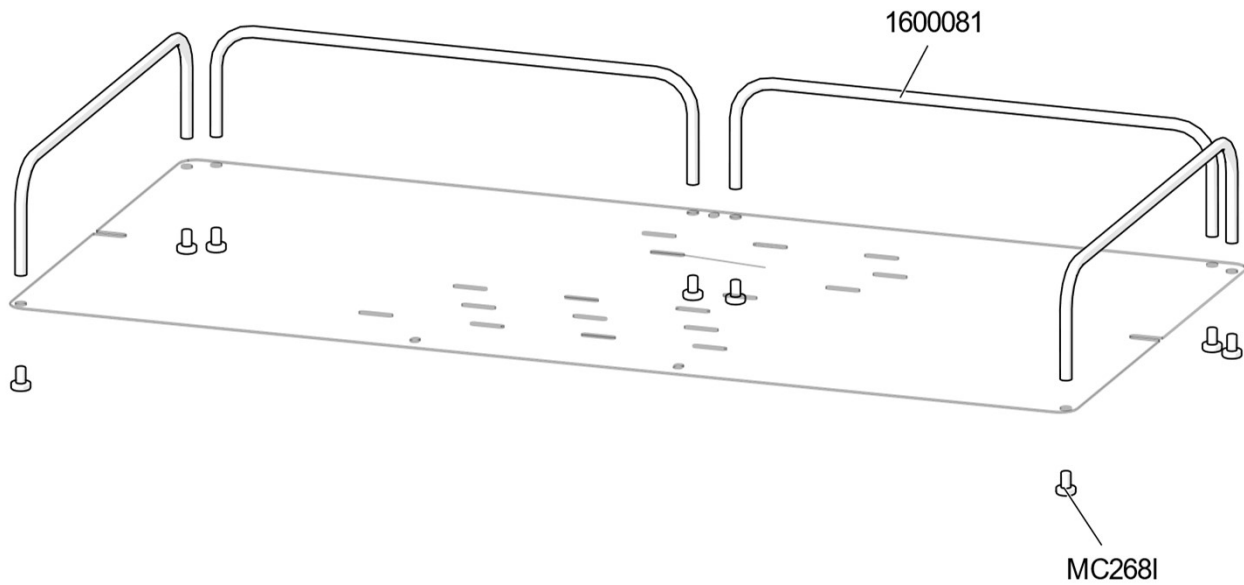
CODE	DESCRIPTION
1400037	SIDE GIULIETTA
1400202	COVER PL2SVX
1400205	CARTER COVER GROUP PL2SVX
1400206	BACK PANEL PL2SVX
1400209	DRIP TRAY PL2SVX
1600082	WIRE GRATE FOR DRIP TRAY
2200013CR	SCREW COVER FOR KNOB
3700007	WATER AND STEAM KNOB
9100043	SCREW TCBIC 3,5X12,5 INOX
9500025	PLASTIC NUT H0,8 L4,5
CD553INOX	SCREW M4*16 IN STAINLESS STEEL
FS017	SCREW TBCEI M5X10
MC045	OR DIAM. i.9 T2 SILICONE 70 SH
MC268	SCREW M5x8
MC591	ADHESIVE SPONGE
<b>MC971</b>	<b>CAUTION HOT LABEL</b>



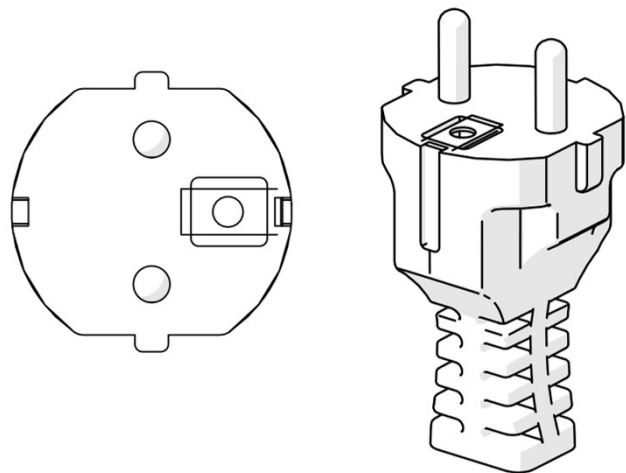
CODE	DESCRIPTION
8800004	CARTON PACKAGING FOR GIULIETTA
8800005	WOOD PACKAGING FOR GIULIETTA
<b>8900028</b>	<b>PACKAGING ELEMENTS</b>



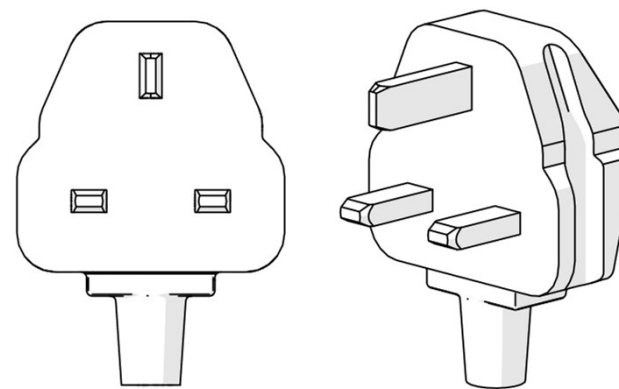
CODE	DESCRIPTION
1600081	RAIL FOR CUPS PL2SVX
<b>MC268I</b>	<b>SCREW 5x8 IN STAINLESS STEEL</b>



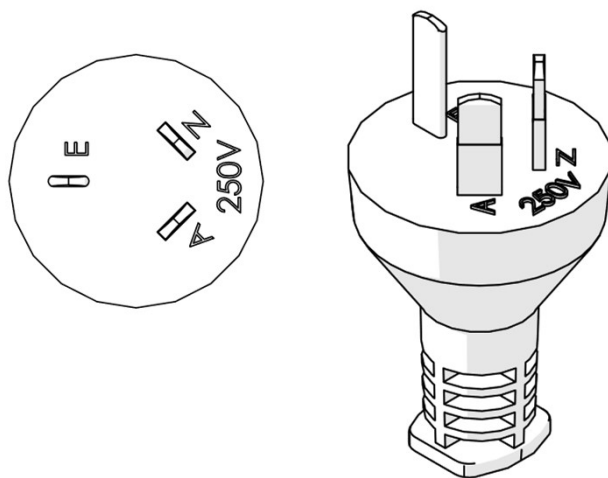
**GV025-48 (EUROPE)**



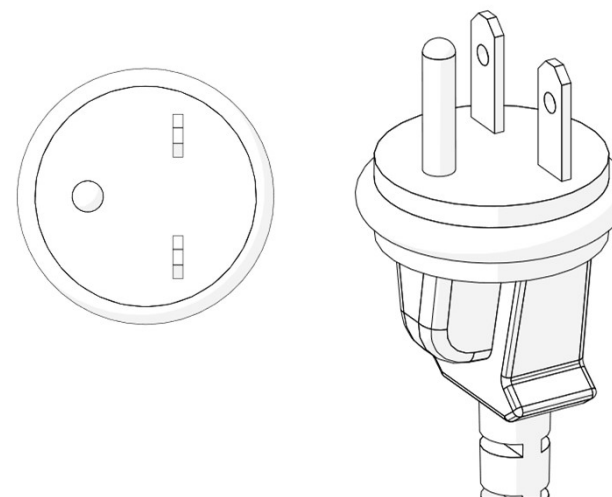
**9600065 (UNITED KINGDOM)**



**MC016AUS (AUSTRALIA)**



**GV028-35L1 (CANADA - USA)**

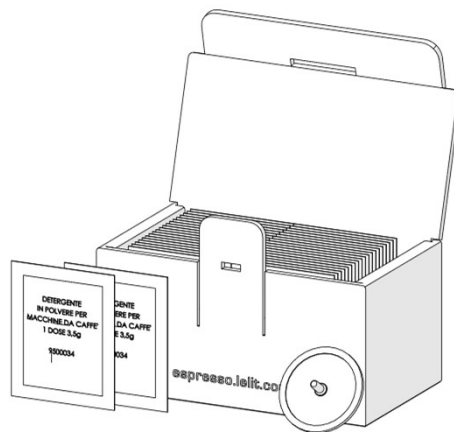




PLA180S



PLA9201



PLA9203



PLA585S



PLA586S



CODE	DESCRIPTION
PLA180S	LELIT58 FILTERS SET
PLA9201	PACKAGE OF 40 SINGLE-DOSE (3.5GR) GROUP CLEANER
PLA9203	PACKAGE OF 10 SINGLE-DOSE BOTTLE (25ML) STEAM WAND CLEANER
PLA585S	LELIT58 1WAY, HIGH FILTERHOLDER
<b>PLA586S</b>	<b>LELIT58 2WAYS, HIGH FILTERHOLDER</b>