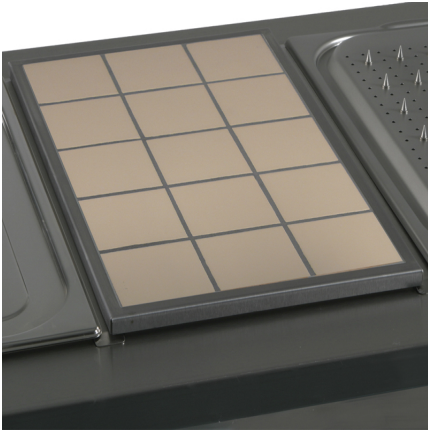


## Inserts and other options



### Tiled Insert - DHTP1

#### DHTP1

GN1/1 size tiled insert, Suitable for use with all Victor Bains Marie units. Standard tile colour is Magnolia, other tile colours available.

## Specifications

**Dimensions:** External: 530 x 325 x 10mm  
**Capacity** 1 x GN1/1

**Construction** Stainless Steel surround, Ceramic Tiles

---

### Victor Manufacturing Limited

Lonsdale Works, Gibson Street, Bradford, BD3 9TF, West Yorkshire, England  
Tel: +44 (0)1274 722125 Email: [email@victormanufacturing.co.uk](mailto:email@victormanufacturing.co.uk)  
Copyright © 2014 Victor Manufacturing Limited