

Technical data sheet for

SINGLE PAN ELECTRIC PASTA COOKER 450mm

E47, E47-7

- High performance single pan pasta cooker
E47 10.5kW 3 phase
E47-7 7.0kW 1 phase
- Heavy-duty 3 coil Incoloy 825 element
- Easy clean 316 grade stainless steel open pan with 10 year limited warranty
- 40L water capacity
- Integrated water fill and starch skimming water faucet
- Four stainless steel pasta baskets supplied
- Hinged basket drain stand
- Safety cut-out thermostat for empty pan/water boil out
- Stainless steel exterior
- Easy clean
- Easy service
- Fully modular



E47

Overall Construction

- Pan 1.5mm 316 stainless steel with 10 year limited warranty
- Bull nose welded 1.5mm stainless steel
- Splashback 1.2mm stainless steel
- Side panels 1.2mm stainless steel
- Double skin door with 0.9mm stainless exterior
- 25mm (1") skimming overflow and pan drains drain valve
- 63mm dia. heavy-duty 1.2mm stainless steel legs with adjustable feet
- 4 stainless steel baskets with moulded handles
- Stainless steel wire basket support grid in pan

Controls

- Large easy to use knob - heat resistant reinforced
- 3 power settings (boil-simmer-standby)
- Mechanical thermostat
- Thermostat range 30°C - 110°C
- Fail safe over-temperature safety cut-out
- Element tilt switch for heating cut-out
- Indicator lights for power & heating
- Fine adjustment water faucet for pan filling and water refreshing/ starch skimming

Cleaning and Servicing

- Open stainless steel pan for easy clean
- Hinged basket drain stand
- Removable basket support grid
- 25mm (1") drain valve for effective draining
- Easy clean stainless steel exterior
- Access to all parts from front of unit

Technical data sheet for SINGLE PAN ELECTRIC PASTA COOKER 450mm

Specifications

Pan Size

Water capacity 40L
Width 365mm
Length 405mm
Basket immersion depth 165mm

Baskets

4 stainless steel perforated baskets with moulded plastic handles 165mm square x 180mm deep
Stainless steel wire basket support grid

Elements

1 x 10.5kW Incoloy 825 heating element (E47)
1 x 7.0kW Incoloy 825 heating element (E47-7)

Electrical Requirements

E47
10.5kW, 400-415V, 50/60Hz, 3P+N+E
L1 14.6A
L2 14.6A
L3 14.6A

E47-7

7.0kW, 220-240V, 50/60Hz, 1P+N+E
L1 29.2A

Electrical Connection

56mm from RH side, 541mm from rear
and 489mm from floor

Water Connection

Cold water connection 50mm from left hand side,
556mm from rear and 150mm from floor

R¹/₂ (BSP) male

550kPa 80psi maximum water pressure

Drain Connection

Drain must be connected to system suitable for
boiling water discharge
1" BSP Male connection 118mm from left hand side,
470mm from rear, and 170mm from floor

Dimensions

Width 450mm
Depth 812mm
Height 915mm
Incl. splashback 1085mm

Nett weight

83kg

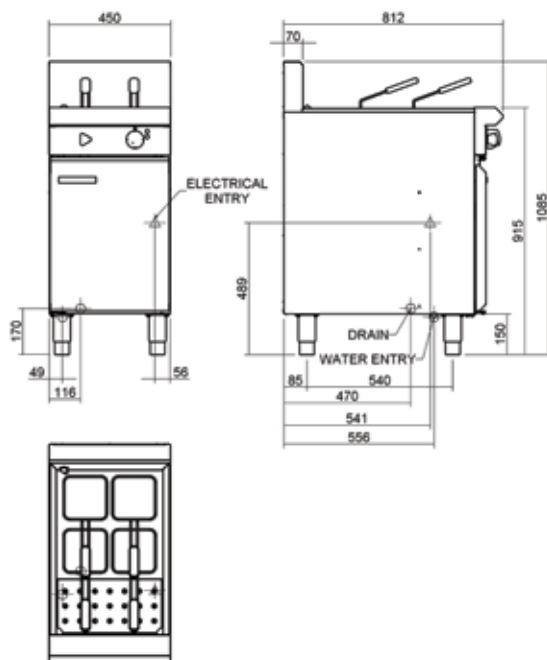
Packing data

0.54m³, 124kg
Width 870mm
Depth 495mm
Height 1255mm

Options

Rectangular baskets 320mm x 165mm
Side splash guards
Joining caps

E47



BLUE SEAL

www.blue-seal.co.uk
www.bluesealevolution.com

United Kingdom

Blue Seal Limited

Unit 67
Gravelly Business Park
Gravelly
Birmingham B24 8TQ
England
Telephone 0121-327 5575
Facsimile 0121-327 9711
Email sales@blue-seal.co.uk
www.blue-seal.co.uk

Australia

Moffat Pty Limited

740 Springvale Rd
Mulgrave
Victoria 3170
Australia
Telephone 03-9518 3888
Facsimile 03-9518 3833
Email vsales@moffat.com.au
www.moffat.com.au

New Zealand

Moffat Limited

16 Osborne St
PO Box 10-001
Christchurch 8011
New Zealand
Telephone 03-389 1007
Facsimile 03-389 1276
Email sales@moffat.co.nz
www.moffat.co.nz



Designed and manufactured by

MOFFAT

ISO9001
All Blue Seal products are designed and manufactured by Moffat using the internationally recognised ISO9001 quality management system, covering design, manufacture and final inspection, ensuring consistent high quality at all times.



In line with policy to continually develop and improve its products, Moffat Limited reserves the right to change specifications and design without notice.