



**Electrolux**

## Modular Cooking Range Line 700XP Two Wells Electric Fryer Top 12 liter

ITEM # \_\_\_\_\_

MODEL # \_\_\_\_\_

NAME # \_\_\_\_\_

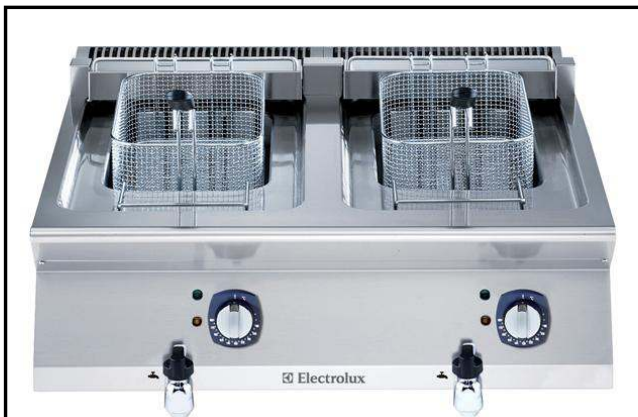
SIS # \_\_\_\_\_

AIA # \_\_\_\_\_



**Electrolux**

Modular Cooking Range Line  
700XP Two Wells Electric Fryer Top 12 liter



### Modular Cooking Range Line

#### 700XP Two Wells Electric Fryer Top 12 liter

- 371080 (E7FREH2E00)** 12+12-lt electric fryer top with 2 wells and 2 baskets, internal heating elements
- 371143 (E7FREH2E0N)** 12+12-lt electric fryer top with 2 wells and 2 baskets, internal heating elements

### Short Form Specification

**Item No.** \_\_\_\_\_

To be installed on open base installations, bridging supports or cantilever systems. High efficiency tilting incoloy armoured heating elements (17.4kW) placed inside the wells. Deep drawn wells. Oil drains through a tap on the front. Exterior panels in stainless steel with Scotch Brite finish. One piece pressed work top in 1.5 mm thick stainless steel. Right-angled side edges to allow flush-fitting junction between units.

### Main Features

- Unit to be mounted on open base cupboards, bridging supports or cantilever systems.
- Deep drawn V-Shaped wells.
- High efficiency tilting heating elements attached inside the wells.
- Thermostatic regulation of oil temperature up to a maximum of 185 °C.
- Overheat protection thermostat as standard on all units.
- Oil drains through a tap positioned on the front the wells.
- All major compartments located in front of unit for ease of maintenance.
- IPX 4 water protection.

### Construction

- Interior of well with rounded corners for ease of cleaning.
- All exterior panels in Stainless Steel with Scotch Brite finishing.
- One piece pressed 1.5 mm work top in Stainless steel.
- Model has right-angled side edges to allow flush fitting joints between units, eliminating gaps and possible dirt traps.

### Included Accessories

- 2 of Basket for 12lt electric fryer tops PNC 921629

### Optional Accessories

- 4 wheels, 2 swivelling with brake (700/900XP). It is mandatory to install with base supports for feet/wheels.  PNC 206135
- Support for bridge type system, 800mm  PNC 206137
- Support for bridge type system, 1000mm  PNC 206138
- Support for bridge type system, 1200mm  PNC 206139
- Support for bridge type system, 1400mm  PNC 206140
- Support for bridge type system, 1600mm  PNC 206141
- Chimney upstand, 800mm  PNC 206304
- Right and left side handrails  PNC 206307
- Base support for feet or wheels - 800mm (700/900)  PNC 206367
- Rear paneling - 800mm (700/900)  PNC 206374

**APPROVAL:** \_\_\_\_\_



**Electrolux**

## Modular Cooking Range Line 700XP Two Wells Electric Fryer Top 12 liter

- Rear paneling - 1000mm (700/900) PNC 206375
- Rear paneling - 1200mm (700/900) PNC 206376
- Chimney grid net, 400mm PNC 206400
- Frontal handrail 800mm PNC 216047
- Frontal handrail 1200mm PNC 216049
- Frontal handrail 1600mm PNC 216050
- Large handrail - portioning shelf, 400mm PNC 216185
- Large handrail - portioning shelf, 800mm PNC 216186
- 2 side covering panels for top appliances PNC 216277
- Basket for 12lt electric fryer tops PNC 921629
- 2 baskets for 2x5lt and 7lt electric fryers PNC 960638



**Modular Cooking Range Line  
700XP Two Wells Electric Fryer Top 12 liter**

The company reserves the right to make modifications to the products without prior notice. All information correct at time of printing.

2014.06.23



Electrolux

# Modular Cooking Range Line 700XP Two Wells Electric Fryer Top 12 liter

## Electric

### Supply voltage:

371080 (E7FREH2E00)

400 V/3N ph/50/60 Hz

371143 (E7FREH2E0N)

230 V/3 ph/50/60 Hz

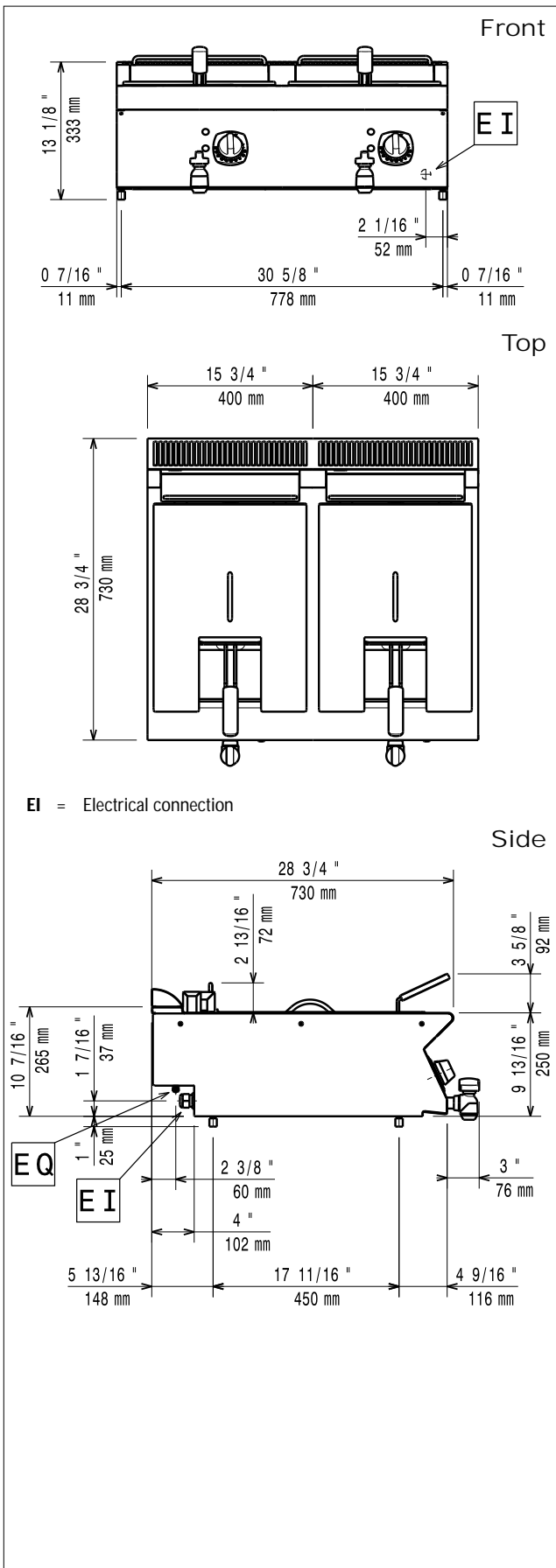
### Total Watts:

17.4 kW

## Key Information

<b>Usable well dimensions (width):</b>	240 mm
<b>Usable well dimensions (height):</b>	235 mm
<b>Usable well dimensions (depth):</b>	420 mm
<b>Well capacity:</b>	10 lt MIN; 12 lt MAX
<b>Thermostat Range:</b>	105 °C MIN; 185 °C MAX
<b>Net weight:</b>	45 kg
<b>Shipping weight:</b>	54 kg
<b>Shipping height:</b>	540 mm
<b>Shipping width:</b>	
371080 (E7FREH2E00)	820 mm
371143 (E7FREH2E0N)	900 mm
<b>Shipping depth:</b>	
371080 (E7FREH2E00)	900 mm
371143 (E7FREH2E0N)	820 mm
<b>Shipping volume:</b>	0.4 m <sup>3</sup>

If appliance is set up or next to or against temperature sensitive furniture or similar, a safety gap of approximately 150 mm should be maintained or some form of heat insulation fitted.



Modular Cooking Range Line  
700XP Two Wells Electric Fryer Top 12 liter

The company reserves the right to make modifications to the products without prior notice. All information correct at time of printing.