



Electrolux

Modular Cooking Range Line 700XP Two Wells Freestanding Electric Fryer 14 liter

ITEM # _____

MODEL # _____

NAME # _____

SIS # _____

AIA # _____



Electrolux



Modular Cooking Range Line

700XP Two Wells Freestanding Electric Fryer 14 liter

371085 (E7FREH2FF0)

14+14-lt electric fryer free standing with 2 wells and 2 baskets, internal heating elements

371144 (E7FREH2FFN)

14+14-lt electric fryer free standing with 2 wells and 2 baskets, internal heating elements

Short Form Specification

Item No. _____

To be installed on height adjustable feet in stainless steel. High efficiency tilting incoloy armoured heating elements (17.4kW) placed inside the wells. Deep drawn wells. Oil drains through a tap into a container under the well. Exterior panels in stainless steel with Scotch Brite finish. One piece pressed work top in 1.5 mm thick stainless steel. Right-angled side edges to allow flush-fitting junction between units.

Main Features

- Unit to be mounted on height adjustable feet in stainless steel.
- High efficiency tilting heating elements attached inside the wells.
- Thermostatic regulation of oil temperature up to a maximum of 185 °C.
- Overheat protection thermostat as standard on all units.
- Oil drains through a tap into a drainage container positioned under the well.
- All major compartments located in front of unit for ease of maintenance.
- IPX 4 water protection.

Construction

- Interior of well with rounded corners for ease of cleaning.
- All exterior panels in Stainless Steel with Scotch Brite finishing.
- One piece pressed 1.5 mm work top in Stainless steel.
- Model has right-angled side edges to allow flush fitting joints between units, eliminating gaps and possible dirt traps.

Included Accessories

- 2 of Door for open base cupboard PNC 206350
- 2 of Full size basket for 14 and 15lt free standing fryers PNC 921691

Optional Accessories

- 4 wheels, 2 swivelling with brake (700/900XP). It is mandatory to install with base supports for feet/wheels. ☐ PNC 206135
- Flanged feet kit ☐ PNC 206136
- Frontal kicking strip for concrete installation, 200mm ☐ PNC 206146
- Frontal kicking strip for concrete installation, 400mm ☐ PNC 206147
- Frontal kicking strip for concrete installation, 800mm ☐ PNC 206148
- Frontal kicking strip for concrete installation, 1000mm ☐ PNC 206150
- Frontal kicking strip for concrete installation, 1200mm ☐ PNC 206151
- Frontal kicking strip for concrete installation, 1600mm ☐ PNC 206152
- Frontal kicking strip, 200mm (not for refr-freezer base) ☐ PNC 206174
- Frontal kicking strip, 400mm (not for refr-freezer base) ☐ PNC 206175

APPROVAL: _____



Electrolux

Modular Cooking Range Line 700XP Two Wells Freestanding Electric Fryer 14 liter

- Frontal kicking strip, 800mm (not for refr- freezer base) PNC 206176 ☐
- Frontal kicking strip, 1000mm (not for refr- freezer base) PNC 206177 ☐
- Frontal kicking strip, 1200mm (not for refr- freezer base) PNC 206178 ☐
- Frontal kicking strip, 1600mm (not for refr- freezer base) PNC 206179 ☐
- 4 feet for concrete installation PNC 206210 ☐
- Pair of side kicking strips PNC 206249 ☐
- Pair of side kicking strips for concrete installation PNC 206265 ☐
- Oil drain pipe for 15lt free standing fryer PNC 206301 ☐
- Chimney upstand, 800mm PNC 206304 ☐
- Right and left side handrails PNC 206307 ☐
- Door for open base cupboard PNC 206350 ☐
- Base support for feet or wheels - 400mm (700/900XP) PNC 206366 ☐
- Base support for feet or wheels - 800mm (700/900) PNC 206367 ☐
- Base support for feet or wheels - 1200mm (700/900) PNC 206368 ☐
- Base support for feet or wheels - 1600mm (700/900) PNC 206369 ☐
- Base support for feet or wheels - 2000mm (700/900) PNC 206370 ☐
- Rear paneling - 800mm (700/900) PNC 206374 ☐
- Rear paneling - 1000mm (700/900) PNC 206375 ☐
- Rear paneling - 1200mm (700/900) PNC 206376 ☐
- Chimney grid net, 400mm PNC 206400 ☐
- 2 side covering panels, h=700mm, d=700mm PNC 216000 ☐
- Frontal handrail 800mm PNC 216047 ☐
- Frontal handrail 1200mm PNC 216049 ☐
- Frontal handrail 1600mm PNC 216050 ☐
- Large handrail - portioning shelf, 400mm PNC 216185 ☐
- Large handrail - portioning shelf, 800mm PNC 216186 ☐
- Full size basket for 14 and 15lt free standing fryers PNC 921691 ☐
- 2 half size baskets for 12, 14 and 15lt fryers PNC 921692 ☐
- Filter for fryer oil collection basin for 7lt, 14lt, 15lt free standing fryers PNC 921693 ☐

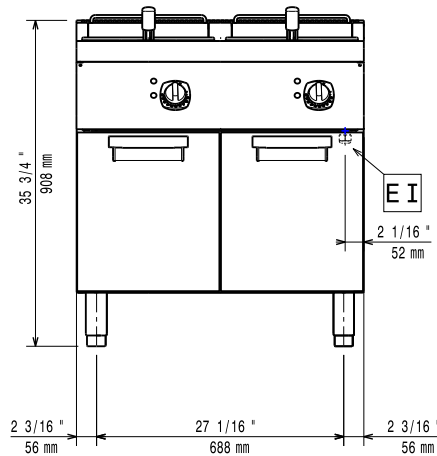


**Modular Cooking Range Line
700XP Two Wells Freestanding Electric Fryer 14 liter**

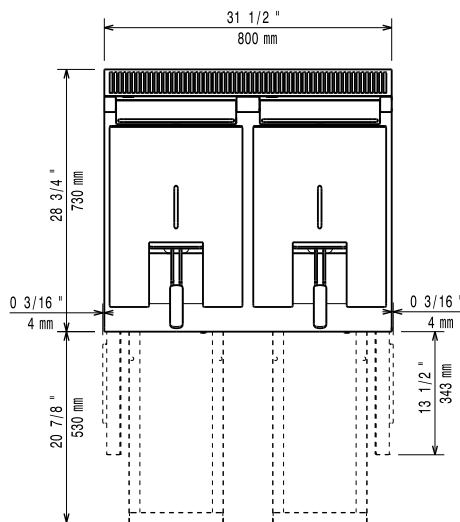
The company reserves the right to make modifications to the products without prior notice. All information correct at time of printing.

2014.06.26

Front

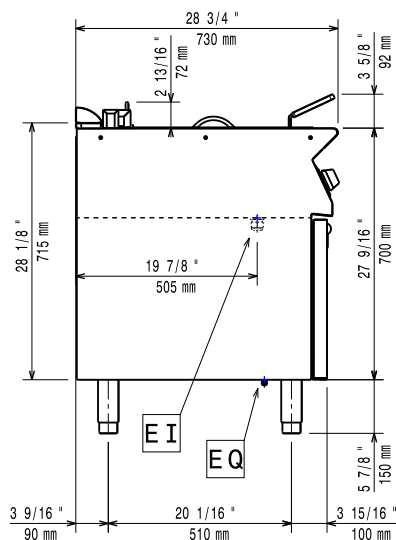


Top



EI = Electrical connection

Side



Electric

Supply voltage:

371085 (E7FREH2FF0)	400 V/3N ph/50/60 Hz
371144 (E7FREH2FFN)	230 V/3 ph/50/60 Hz

Total Watts:

17.4 kW

Key Information

Usable well dimensions (width):	240 mm
Usable well dimensions (height):	285 mm
Usable well dimensions (depth):	380 mm
Well capacity:	12 lt MIN; 14 lt MAX
Thermostat Range:	105 °C MIN; 185 °C MAX
Net weight:	81 kg

Shipping weight:

371085 (E7FREH2FF0)	90 kg
371144 (E7FREH2FFN)	101 kg

Shipping height:

1140 mm

Shipping width:

371085 (E7FREH2FF0)	820 mm
371144 (E7FREH2FFN)	900 mm

Shipping depth:

371085 (E7FREH2FF0)	850 mm
371144 (E7FREH2FFN)	820 mm

Shipping volume:

371085 (E7FREH2FF0)	0.79 m ³
371144 (E7FREH2FFN)	0.84 m ³

If appliance is set up or next to or against temperature sensitive furniture or similar, a safety gap of approximately 150 mm should be maintained or some form of heat insulation fitted.