



Electrolux

Modular Cooking Range Line 900XP One Well Gas Fryer 23 liter

ITEM # _____

MODEL # _____

NAME # _____

SIS # _____

AIA # _____



Electrolux



Modular Cooking Range Line 900XP One Well Gas Fryer 23 liter

391079 (E9FRGD1JF0)

23-lt gas fryer with 1 "V"
shaped well (external burners)
and 2 half size baskets

Short Form Specification

Item No. _____

High efficiency 20 kW burners in stainless steel. Suitable for natural gas or LPG. Deep drawn V-Shaped well. Oil drains through a tap into a container positioned under the well. Height adjustable feet in stainless steel. Exterior panels in stainless steel. Worktop in 20/10, stainless steel. Right-angled side edges eliminate gaps and possible dirt traps between units.

Main Features

- Deep drawn V-Shaped well.
- High efficiency 20 kW burners in stainless steel with flame failure device attached to the outside of the well.
- Thermostatic regulation of oil temperature up to a maximum of 190 °C.
- Flame failure device on each burner.
- Overheat protection thermostat as standard on all units.
- Oil drains through a tap into a drainage container positioned under the well.
- All major compartments located in front of unit for ease of maintenance.
- Piezo spark ignition for added safety.
- IPX5 water resistance certification.
- The special design of the control knob system guarantees against water infiltration.
- Unit delivered with four 50 mm legs in stainless steel as standard (all round Stainless steel kick plates as option).
- Supplied as standard with 2 half size baskets and 1 right side door for cupboard.

Construction

- Unit is 930 mm deep to give a larger working surface area.
- All exterior panels in Stainless Steel with Scotch Brite finishing.
- Model has right-angled side edges to allow flush fitting joints between units, eliminating gaps and possible dirt traps.
- Interior of well with rounded corners for ease of cleaning.

Included Accessories

- 1 of Door for open base cupboard PNC 206350
- 1 of 2 half size baskets for 18/23lt well fryers PNC 927223

Optional Accessories

- Junction sealing kit ☐ PNC 206086
- Draught diverter ☐ PNC 206126
- Matching ring for flue condenser ☐ PNC 206127
- 4 wheels, 2 swivelling with brake (700/900XP). It is mandatory to install with base supports for feet/wheels. ☐ PNC 206135
- Flanged feet kit ☐ PNC 206136

APPROVAL: _____



Electrolux

Modular Cooking Range Line 900XP One Well Gas Fryer 23 liter

- Sediment tray for 23 lt fryers PNC 206173 ☐
- Pair of side kicking strips (not for refr-freezer base) PNC 206180 ☐
- Hygienic lid for 23lt fryers PNC 206201 ☐
- Frontal kicking strip for 23lt fryers in two parts PNC 206203 ☐
- Extension pipe for oil drainage for 15lt, 18lt, 23lt fryers PNC 206209 ☐
- Water coulumn with swivel arm (water column extension not included) PNC 206289 ☐
- Chimney upstand, 400mm PNC 206303 ☐
- Flue condenser for 1/2 module, 120 mm diameter PNC 206310 ☐
- Door for open base cupboard PNC 206350 ☐
- Filter for fryer oil collection basin for 15lt, 18lt, 23lt free standing fryers PNC 206359 ☐
- Base support for wheels (lateral) for 23lt fryers and pastacookers (900) PNC 206372 ☐
- Side handrail-right/left hand PNC 216044 ☐
- Frontal handrail 400mm PNC 216046 ☐
- Frontal handrail 800mm PNC 216047 ☐
- Frontal handrail 1200mm PNC 216049 ☐
- Frontal handrail 1600mm PNC 216050 ☐
- 2 side covering panels for free standing appliances PNC 216134 ☐
- Large handrail - portioning shelf, 400mm PNC 216185 ☐
- Large handrail - portioning shelf, 800mm PNC 216186 ☐
- 2 half size baskets for 18/23lt well fryers PNC 927223 ☐
- Pressure regulator for gas units PNC 927225 ☐
- 1 full size basket for 18/23lt well fryers PNC 927226 ☐
- Unclogging rod for HD fryers drainage pipe PNC 927227 ☐
- Oil life saver for 23lt fryers PNC 960645 ☐



**Modular Cooking Range Line
900XP One Well Gas Fryer 23 liter**

The company reserves the right to make modifications to the products without prior notice. All information correct at time of printing.

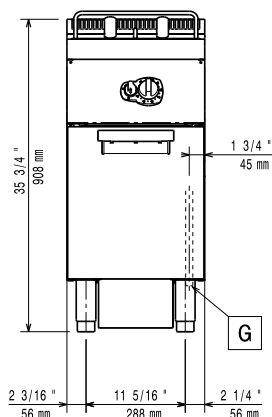
2014.06.26



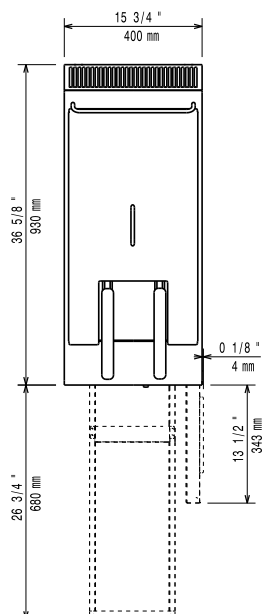
Electrolux

Modular Cooking Range Line 900XP One Well Gas Fryer 23 liter

Front

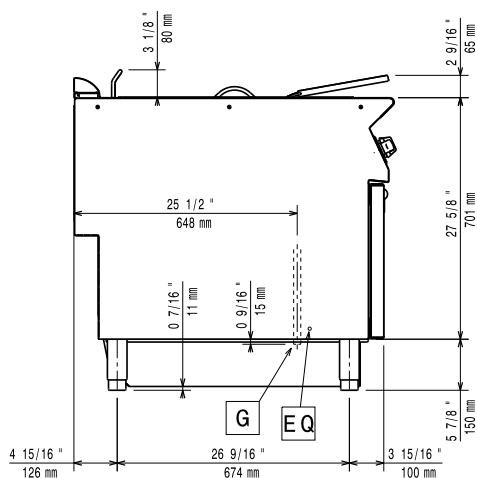


Top



G = Gas connection

Side



Gas

Gas Power:

391079 (E9FRGD1JF0)

68180 Btu/hr (20 kW)

Gas Type Option:

LPG; Natural Gas

Gas Inlet:

1/2"

Natural gas - Pressure:

7" w.c. (17.4 mbar)

LPG Gas Pressure:

11" w.c. (27.7 mbar)

Key Information

Usable well dimensions (width): 340 mm

Usable well dimensions (height): 575 mm

Usable well dimensions (depth): 400 mm

Well capacity: 21 lt MIN; 23 lt MAX

Thermostat Range: 120 °C MIN; 190 °C MAX

Net weight: 57 kg

Shipping weight: 75 kg

Shipping height: 1080 mm

Shipping width: 460 mm

Shipping depth: 1020 mm

Shipping volume: 0.51 m³

If appliance is set up or next to or against temperature sensitive furniture or similar, a safety gap of approximately 150 mm should be maintained or some form of heat insulation fitted.



**Modular Cooking Range Line
900XP One Well Gas Fryer 23 liter**

The company reserves the right to make modifications to the products without prior notice. All information correct at time of printing.

2014.06.26