



Electrolux

Modular Cooking Range Line 900XP Two Wells Electric Fryer 23 liter

ITEM # _____

MODEL # _____

NAME # _____

SIS # _____

AIA # _____



Electrolux



Modular Cooking Range Line
900XP Two Wells Electric Fryer 23 liter

391090 (E9FREH2JF0) 23+23-lt electric fryer with 2
"V" shaped wells (external
heating elements) and 4 half
size baskets

Short Form Specification

Item No. _____

High efficiency infrared heating elements (36kW) attached to the outside of the wells. Deep drawn V-Shaped wells. Oil drains through a tap into a container positioned under the wells. Height adjustable feet in stainless steel. Exterior panels in stainless steel. Worktop in 20/10, stainless steel. Right-angled side edges eliminate gaps and possible dirt traps between units.

Main Features

- Deep drawn V-Shaped wells.
- Interior of wells with seamlessly laser-welded corners for ease of cleaning.
- External infrared heating elements for ease of cleaning of internal well.
- Thermostatic regulation of oil temperature up to a maximum of 185 °C.
- Overheat protection thermostat as standard on all units.
- Oil drains through a tap into a drainage container positioned under the well.
- All major compartments located in front of unit for ease of maintenance.
- IPX5 water resistance certification.
- The special design of the control knob system guarantees against water infiltration.
- Unit delivered with four 50 mm legs in stainless steel as standard (all round Stainless steel kick plates as option).
- Supplied as standard with 4 half size baskets and 1 right and left side doors for cupboard.

Construction

- Unit is 930 mm deep to give a larger working surface area.
- All exterior panels in Stainless Steel with Scotch Brite finishing.
- Model has right-angled side edges to allow flush fitting joints between units, eliminating gaps and possible dirt traps.

Included Accessories

- 2 of Door for open base cupboard PNC 206350
- 2 of 2 half size baskets for 18/23lt well fryers PNC 927223

Optional Accessories

- Junction sealing kit PNC 206086
- 4 wheels, 2 swivelling with brake (700/900XP). It is mandatory to install with base supports for feet/wheels. PNC 206135
- Flanged feet kit PNC 206136
- Sediment tray for 23 lt fryers PNC 206173
- Pair of side kicking strips (not for refr-freezer base) PNC 206180
- Hygienic lid for 23lt fryers PNC 206201
- Frontal kicking strip for 23lt fryers in two parts PNC 206203

APPROVAL: _____



Electrolux

Modular Cooking Range Line 900XP Two Wells Electric Fryer 23 liter

- Extension pipe for oil drainage for 15lt, 18lt, 23lt fryers PNC 206209
- Water column with swivel arm (water column extension not included) PNC 206289
- Chimney upstand, 800mm PNC 206304
- Door for open base cupboard PNC 206350
- Filter for fryer oil collection basin for 15lt, 18lt, 23lt free standing fryers PNC 206359
- Base support for wheels (lateral) for 23lt fryers and pastacookers (900) PNC 206372
- Side handrail-right/left hand PNC 216044
- Frontal handrail 800mm PNC 216047
- Frontal handrail 1200mm PNC 216049
- Frontal handrail 1600mm PNC 216050
- 2 side covering panels for free standing appliances PNC 216134
- Large handrail - portioning shelf, 400mm PNC 216185
- Large handrail - portioning shelf, 800mm PNC 216186
- 2 half size baskets for 18/23lt well fryers PNC 927223
- 1 full size basket for 18/23lt well fryers PNC 927226
- Unclogging rod for HD fryers drainage pipe PNC 927227
- Oil life saver for 23lt fryers PNC 960645



**Modular Cooking Range Line
900XP Two Wells Electric Fryer 23 liter**

The company reserves the right to make modifications to the products without prior notice. All information correct at time of printing.

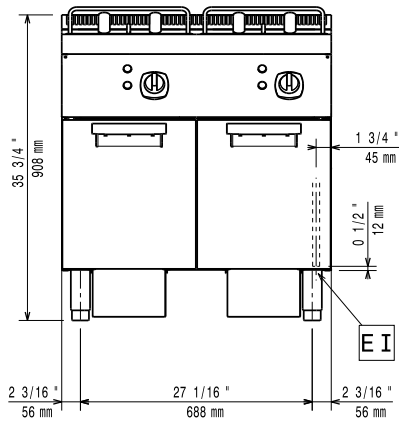
2014.06.26



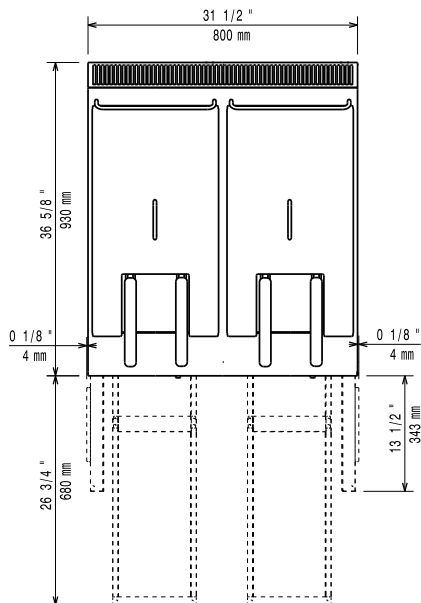
Electrolux

Modular Cooking Range Line 900XP Two Wells Electric Fryer 23 liter

Front

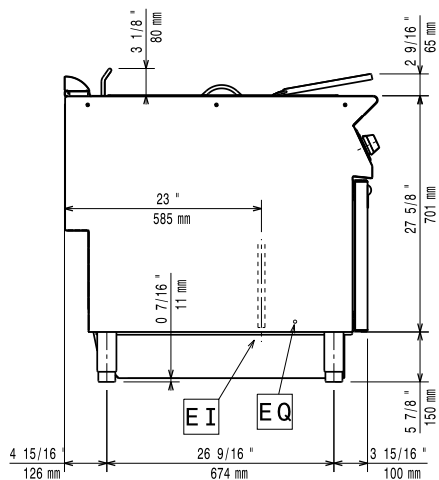


Top



EI = Electrical connection

Side



Electric

Supply voltage:

391090 (E9FREH2JF0) 400 V/3N ph/50/60 Hz

Total Watts:

36 kW

Key Information

Usable well dimensions (width):	340 mm
Usable well dimensions (height):	575 mm
Usable well dimensions (depth):	400 mm
Well capacity:	21 lt MIN; 23 lt MAX
Thermostat Range:	105 °C MIN; 185 °C MAX
Net weight:	115 kg
Shipping weight:	120 kg
Shipping height:	1080 mm
Shipping width:	1020 mm
Shipping depth:	860 mm
Shipping volume:	0.95 m ³

If appliance is set up or next to or against temperature sensitive furniture or similar, a safety gap of approximately 150 mm should be maintained or some form of heat insulation fitted.



Modular Cooking Range Line
900XP Two Wells Electric Fryer 23 liter

The company reserves the right to make modifications to the products without prior notice. All information correct at time of printing.