

HOSHIZAKI
Advance



Parts list for Advance F70



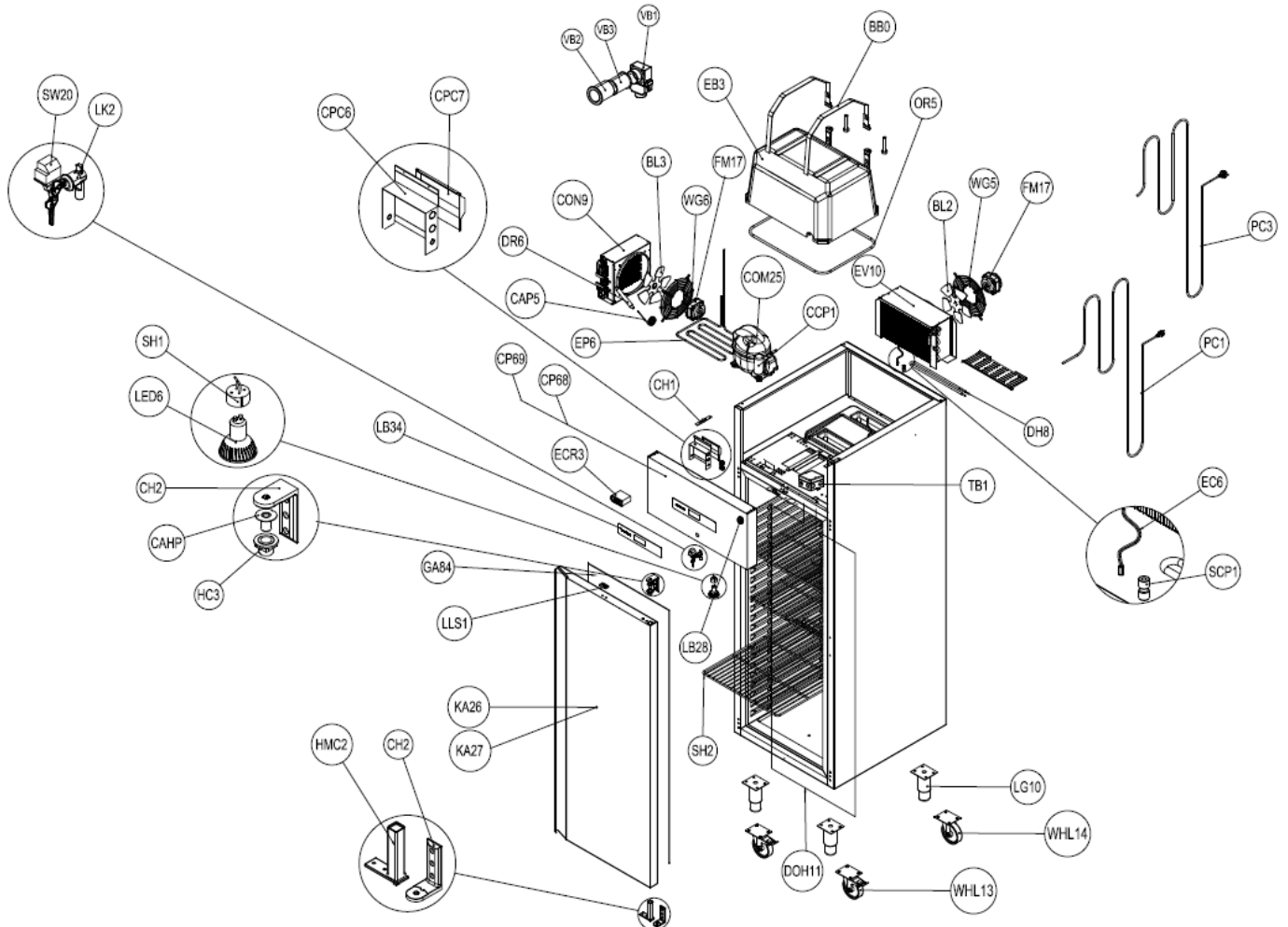
HOSHIZAKI Advance F70

Description :

Parts list for Advance F70

Compiled.		Latest revision.			Deleted.	
Date	Name	Date	Name	Rev.no	Date	Name
24 th Aug, 2022	Orcan Ucan	2 nd March, 2022	Mustafa Dede	1		

Exploded view



HOSHIZAKI Advance F70

Description :

Parts list for Advance F70

Compiled.		Latest revision.			Deleted.	
Date	Name	Date	Name	Rev.no	Date	Name
24 th Aug, 2022	Orcan Ucan	2 nd March, 2022	Mustafa Dede	1		

PICTURE ID	DESCRIPTION	Hoshizaki item code
BB2	CABINET BOX BELT	760660455
BL2	CONDENSER FAN BLADE IMPELLER ALU. Q20 CM-34°	760660080
BL3	CONDENSER FAN BLADE IMPELLER ALU. Q25 CM-28°	760660217
CAHP	CABINET HINGE PIN	760660031
CAP5	CAPILLARY 1,0*2,80	760660150
CCP1	START CAPACITOR 64-77 MFD 330V (Y)	760660276
CH1	CANOPY HINGE 245-061-061	760660218
CH2	CABINET HINGE	760660078
COM25	COMPRESSOR R-290 EMBRACO NEU 2155 U	760660219
CON9	CONDANSER 1/2 HP Ø25 DAVLUMBAZ (MA 20 081)	760660220
CP68	CONTROL PANEL ADVANCE WITH LABEL-CABINET SINGLE (G)	760660313
CP69	CONTROL PANEL ADVANCE WITH LABEL-CABINET SINGLE 430 (G)	760660314
CPC1	CONTROL UNIT COVER BOTTOM BODY	760660046
CPC2	CONTROL UNIT COVER REAR LID	760660047
CPC5	CABLE GLAND PG 21	760660092
DH8	DEFROST HEATER 400W/230V CABINETS	760660222
DOH11	Heating cable PVC - 230V - 20W Lenght incl. coldzone 4350mm Termination: Faston 6,3x0,8	760660223
DR5	DRYER 20 GR DOUBLE INLET 6-6,35*2,5	760660173
EB3	EPS EVAPORATOR COVER FOR CABINETS (1DF)	760660264
EC6	DIGITAL SENSOR EVCO NTC PROP EVTPN615F200	760660054
ECR3	PREPROGRAMMED CONTROLLER DIGITAL EVCO EV3B23N7 FREEZER SUF65EG	760660271
EP6	RE-EVAPORATION PIPE 6MM (GN600-1200NMV)	760660225
EV10	EVAPARATOR GN 600 LMV-1200 NMV	760660226
FM17	ELCO ECM 12-10 -WITH 100CM CABLE -HBR12N0AC3013-	760660275
GA84	MAGNETIC SEAL GRAY 574*1450 MM GN 600 K MODEL 3 CHAMBER	760660258
HC3	CABINET HINGE PVC BUSHING	760660032
HMC2	SPRING FORCED HINGE FOR CABINET DOORS	760660090
KA26	SOLID DOOR ASSEMBLY (GN 600 MONO H SINGLE DOOR) 304	760660285
KA27	SOLID DOOR ASSEMBLY (GN 600 MONO H SINGLE DOOR) 430	760660286
LB34	ADVANCE CHARACTER LABEL (G)	760660402
LED6	SPOTLIGHT LED 3,2W PHILIPS ESSENTIAL 6500K	760660230
LG10	STAINLESS STEEL LEG 130-150 MM	760660454
LK2	DOOR LOCK	760660127
LLS1	LOCK LIP STRIKE	760660231
OR5	SINGLE DOOR CABINET EVAP HOUSING O-RING	760660289
PC1	POWER CORD LENGTH 3M 3x1,5 HO5VV-F	760660236
PC3	POWER CORD WITH BRITISH PLUG	760660257
SCP1	DIGITAL SENSOR COVER PART	760660233
SH1	CABLE GROUP FOR LIGHT SOCKET	760660234
SH2	SHELF PE COATED WITH BACK GUARD GRAY-RAL 7045 GN- 650*530	760660009
SW20	DOOR SWITCH DR-104 2,5A 250V AC NOVA	760660056

HOSHIZAKI
Advance F70

Description :

Parts list for Advance F70

Compiled.		Latest revision.			Deleted.	
Date	Name	Date	Name	Rev.no	Date	Name
24 th Aug, 2022	Orcan Ucan	2 nd March, 2022	Mustafa Dede	1		

TB1	TERMINAL BOX 75*75*50	760660267
VB1	PLASTIC VACUUM BREAKER (765081206)	765081206
VB2	PLASTIC OUTER EXTENSION PIPE (765081202)	765081202
VB3	PLASTIC INNER EXTENSION PIPE (765081201)	765081201
WG5	FAN GUARD WIRE Q20 CM	760660284
WG6	FAN GUARD WIRE Q25 CM	760660287
WHL13	CASTOR Q100 AND HEIGHT 130 MM WITH BRAKE BUT SWIVEL	760660176
WHL14	CASTOR Q100 AND HEIGHT 130 MM WITHOUT BRAKE BUT SWIVEL	760660177