

G500DUO Undercounter Glasswasher

Technical Specifications



CLASSEQ
Warewashing Made Simple.

G500DUO

Front-loading commercial glasswasher with a digital display, two wash programs and WRAS compliance for effortless and consistently clean results.

The G500DUO is an easy to operate, under counter glasswasher with a 500 x 500mm basket that holds 25 pint-sized glasses. It features two wash cycles – standard (two minute) and light (1.5min), meaning that this machine is capable of washing up to 1000 glasses per hour.

The digital LCD display accurately shows the temperature of the wash tank and rinse boiler, re-assuring the operator that it is up to temperature and fully sanitising during the wash cycle.

With intuitive colour coded lighting and universally recognised symbols, this machine has been designed to make operating as simple as possible, whilst also featuring performance enhancing customisations through its advanced settings mode. Additionally, its clever software constantly monitors wash cycles, temperatures, chemical usage and any errors giving valuable data which is used to improve operational efficiencies.

The Duo range of products all come with drain pumps, rinse booster pumps, built in chemical dispensers and full double skinned construction ensuring they meet all installation regulations and requirements. All Duo models are also available with an optional water softener – an essential requirement in hard water areas. (G500DUOWS)



Water Softener

Our G500DUO is also available with an integral water softener. Model code: G500DUOWS.



Locally manufactured

Our machines are Made in Britain (Staffordshire) meaning shorter lead times on delivery, parts and support.



2 Wash Programs

The G500DUO Standard (2 minute) and Light (1.5min) cycles allow for maximum output without compromising wash quality.



LCD display

The G500DUO enhances user functionality by displaying rinse and wash tank temperatures.



Double skinned sides and door

Allows for quieter operation and reduced heat loss.



Water Board (WRAS) compliant

All Duo machines are fully compliant with essential Water Board regulations.



Advanced Customer Features

Adjust rinse aid and detergent settings, priming of chemical pumps and set water softener to match local water hardness levels (WS models only).



Colour Coded Display

Amber flashing - Machine heating
Blue - Machine in cycle
Green - Machine ready



Operational Data monitoring

Our machine constantly measures all cycles, heating and errors providing useful data for improving efficiencies.

Machine Features:

1 500mm x 500mm basket	2 Built-in chemical pumps	3 Drain pump	4 Rinse Booster Pump	5 Temperature interlock - guarantees hot rinse
6 Energy saving standby mode	7 Stainless steel dual wash filter system	8 Assisted self-clean	9 Easily removable components	

Hydraulic specifications

Water supply connection

Minimum allowed supply water pressure

Required water flow rate

Minimum incoming water temperature

Maximum incoming water temperature

Gravity drain height (from machine base)

Pumped drain height (from machine base)

Drain size

G500DUO

G3/4" (3/4" BSP)

0.5 bar G500DUO model only
2.0 bar G500DUOWS model only

11 L/min G500DUO model only
4 L/min G500DUOWS model only

4°C

55°C

40 mm G500DUO model only
N/A G500DUOWS model only

600 mm

Ø40 mm

Electrical specifications

Standard Set-up

Amps Required

Standard Operating Voltage

Total Connected Load

30A (1 phase)

220-240V / 1N~ / 50Hz

6.58kW

Optional Set-up

Amps Required

Standard Operating Voltage

Total Connected Load

13A (3 phase)

380-415V / 3N~/50Hz

6.58kW

Optional Set-up

Amps Required

Standard Operating Voltage

Total Connected Load

12A (1 phase)

220-240V / 1N~ / 50Hz

2.58kW

Performance

Wash tank element

Rinse tank element

Wash tank capacity

Rinse tank capacity

Rinse water consumption at 3 bar

Theoretical maximum racks/hours

Wash tank temperature

Rinse tank temperature

Wash pump power

Rinse pump power

2.00kW

6.00kW

14.5 litres

7.5 litres

3.00 L/cycle

40

55°C

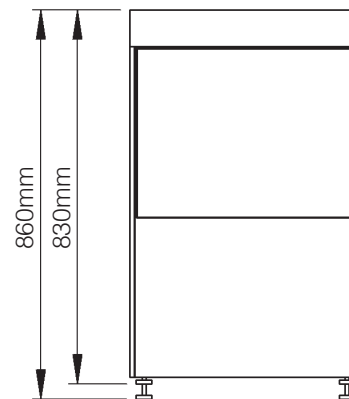
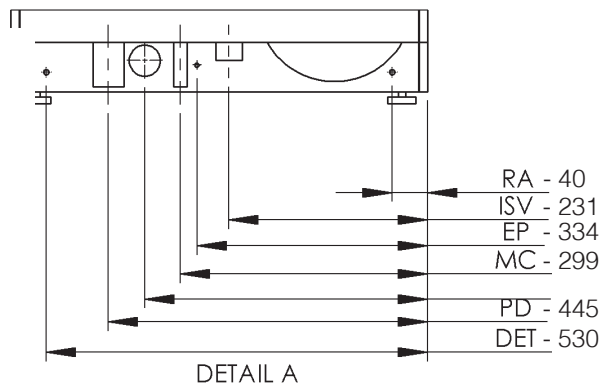
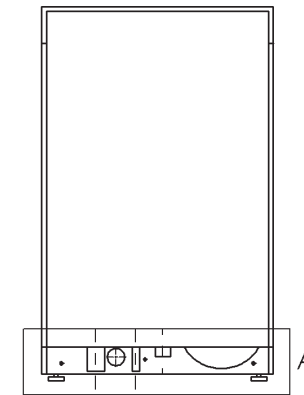
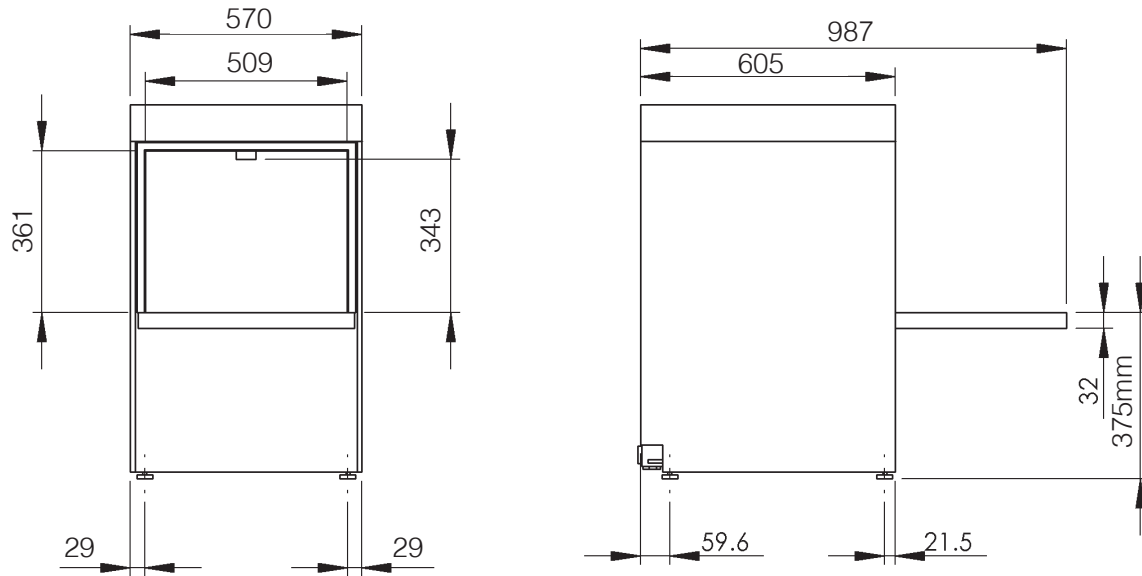
70°C

0.58 kW

0.19 kW

Please Note: G500DUOWS Specification as above.

Mechanical Specifications



Additional Info:

	G500DUO
Wash water temperature	55°C
Glass washer rinse temperature	70°C
Noise level	Under 70dB
Empty weight	54.7kg
Fully Loaded weight	75.2kg
Packed weight	66.6kg DUO model 68.7kg DUOWS model

Dimensions (mm):

570 (W) x 830 (H) (860 max) x 605 (D)

Description	Symbol	Radius from machine (m)
Rinse aid tube	RA	3
Inlet solenoid value	ISV	1.8
Mains electrical cable	EC	1.3
Pumped waste water outlet	PD	1.5
Equipotential bonding stud	EP	-
Detergent tube	DET	3

Please Note: All dimensions in mm

Contact:

Tel: +44 (0)844 225 9250
Email: sales@classeq.co.uk

Classeq Ltd, Roebuck Way,
Knowlhill, Milton Keynes MK5 8WH

www.classeq.co.uk

CLASSEQ
Warewashing Made Simple.