

Hamilton Beach®

COMMERCIAL

GB BLENDER
Operation Manual – Original (2)

FR MÉLANGEUR
Manuel d'utilisation (8)

ES LICUADORA
Manual de Operación (14)

PT LIQUIDIFICADOR
Manual do Utilizador (20)

IT FRULLATORE
Manuale per il funzionamento (26)

DE STANDMIXER
Bedienungsanleitung (32)

PO BLENDERA
Instrukcja obsługi (38)

NL BARMIXER
Gebruiksaanwijzing (44)

DK BAR-BLENDER
Betjeningsvejledning (50)

SE BARBLANDARE
Bruksanvisning (56)

NO HURTIGMIKSER
Brukerhåndbok (62)

GR Μπλέντερ για μπαρ
Εγχειρίδιο χειρισμού (68)

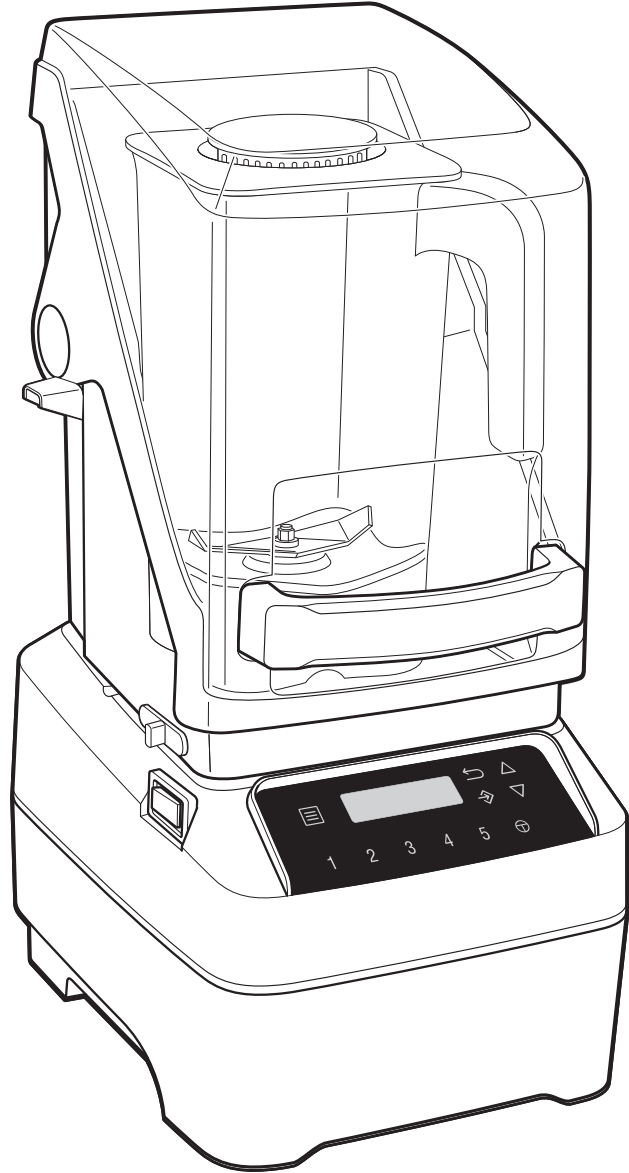
RU Миксер для бара
Руководство по эксплуатации (74)

TU ÇUBUK BLENDER
Çalıştırma Kılavuzu (80)

CN 手提搅拌机
操作手册 (86)

KR 바 블렌더
사용 설명서 (92)

SA الخلاطة التجارية
دليل التشغيل (103)



HBH950 Series

840276600
7/17

For more Good Thinking® visit www.hamiltonbeachcommercial.com

IMPORTANT SAFETY INSTRUCTIONS

WARNING – When using electrical appliances, basic safety precautions should be followed, including the following:

- Operation Manual must be reviewed by each operator before giving authorization to use the blender. Keep Operation Manual handy.
- Before first use, wash container assembly in hot, soapy water. Do NOT place in dishwasher.
- Plug into a grounded outlet.
- Do not remove ground.
- Do not use an adapter.
- Do not use an extension cord.
- Disconnect power before cleaning or servicing.
- To reduce risk of personal injury, unplug cord from outlet when not in use, and before putting on or taking off parts.
- Turn the ON(I)/OFF(O) switch to OFF(O) when the appliance is not operating.
- Unplug the blender and inspect the power cord insulation for cracks on a weekly basis. Refer to "Technical Services" for repair or replacement.
- To protect against electrical shock, do not immerse cord, plug, or blender base in water or any other liquid.
- Do not spray the base with a high-pressure spray gun.
- Extreme caution must be used when moving an appliance containing hot oil or other hot liquids.
- Do not use appliance for other than intended use.
- Not intended for use by or near children.
- Children should be supervised to ensure they do not play with the appliance.
- This appliance is not intended for use by persons (including children) with reduced physical, sensory, or mental capabilities, or lack of experience and knowledge, unless they have been given supervision or instruction concerning use of the appliance by a person responsible for their safety.
- The use of accessory attachments not recommended by the appliance manufacturer may cause injuries.
- To reduce risk of personal injury and to prevent damage to blender or container and cutter assembly, DO NOT insert utensils into blender container while operating blender.
- Do not store any kitchen utensils in the container because the blender would be damaged if inadvertently turned on.
- To prevent possibility of serious personal injury, keep hands out of blender container while operating blender. Always operate blender with container cover in place.
- Avoid contacting moving parts. Switch off the appliance and disconnect from power supply before changing accessories or approaching parts that move in use.
- Blades are sharp. Handle carefully.
- If cutter assembly blades are loose, discontinue use immediately and replace container. Do not attempt to repair or tighten cutter assembly.
- Inspect container and cutter assembly daily. Do not use broken, chipped, or cracked container. Check cutter for wear, nicks, or broken blades. Do not use broken, loose, or cracked cutting blades.
- Do not use outdoors.
- This appliance is intended for short periods of operation, with a rated operating time of 2 minutes.
- Do not leave blender unattended while it is operating.
- To prevent damage to blender, container, or cutter assembly, DO NOT move or shake blender while in operation. If blending action stops during operation, turn blender OFF (O), remove container from base, remove container cover, and use a thin rubber spatula to push mixture towards cutters.
- Be careful if hot liquid is poured into the blender as it can be ejected out of the appliance due to sudden steaming.
- Hot liquids may push lid off jar during blending. To prevent possible burns: Do not fill blender jar beyond the 1 quart (1 liter) level. Keep exposed skin away from lid. Start blending at lowest speed.
- The blender is provided with a power switch/circuit breaker on the side of the unit. If the motor stops turning, reset the power switch.
- This blender's motor is provided with a thermal overload protector. If the motor stops turning during operation or will not restart, unplug and allow to cool for 15 minutes. Plug unit back into outlet and resume operation.
- The normal function of this product may be disturbed by strong electromagnetic

interference. If this occurs, simply reset the product and resume normal operation by following the operation manual. If normal operation cannot be resumed, place the product in a different location.

- Do not operate any appliance with a damaged cord or plug or after the appliance malfunctions, or is dropped or damaged in any manner. If the supply cord of this appliance is damaged, it must be replaced by the manufacturer or its service agent or a similar qualified person. Refer to "Technical Services" for instructions on examination, repair, or electrical or mechanical adjustment.

- **CAUTION:** In order to avoid a hazard due to inadvertent resetting of the thermal cut-out, this appliance must not be supplied through an external switching device, such as a timer, or connected to a circuit that is regularly switched on and off by the utility.
- **UK ONLY:** If fitted with a non-rewirable U.K. plug, the 13 amp fuse approved by ASTA to be B.S. 1362 must be used. If you need a replacement fuse carrier, it must be replaced with the same colour coded carrier with the same markings. Fuse covers and carriers can be obtained from approved service agents.

– SAVE THESE INSTRUCTIONS –

This appliance is intended for professional use and should be used by trained and qualified personnel only.



Electrical Shock Hazard
Disconnect power before cleaning blender base.
Failure to follow these instructions can result in death or electrical shock.



Burn Hazard
Always use caution when blending hot contents.
Failure to follow these instructions can result in burns.



Electrical Shock Hazard
Plug into a grounded outlet.
Do not remove ground.
Do not use an adapter.
Do not use an extension cord.
Failure to follow these instructions can result in death, fire, or electrical shock.



Cut Hazard
Always place lid on container when blending.
Do not put hands, spoons, or other utensils in container when blending.
Failure to follow these instructions can result in broken bones, cuts, or other injuries.

Sanitizing

Sanitize using 1 tablespoon (15 ml) of household bleach per 1 gallon (3.8 liter) of clean, cool water (60°F/16°C), mixed according to the instructions on the bleach.

1. Fill container with sanitizing solution, replace lid and filler cap and run on LOW speed for 2 minutes. Empty container.
2. Wipe exterior with soft cloth dampened with sanitizing solution.
3. Immerse lid and filler cap in sanitizing solution for 2 minutes.
4. Place empty container on base and run on HIGH speed for 2 seconds to remove any moisture from the cutter assembly.
5. **When ready to use**, rinse with clean water.



The complete CE declaration of conformity documentation for this appliance is available in the Technical Support section of our website www.hamiltonbeachcommercial.com.

HBH950 series models, rated 220–240 V~ 50–60 Hz 4.6 A, comply with the following statutory directive and regulations:

- European Machinery Directive 2006/95/EC
- Low Voltage Directive 2014/35/EU
- EMC Directive 2014/30/EU

- RoHS Directive 2011/65/EU
- WEEE Directive 2012/19/EU
- Materials/articles intended for contact with foodstuffs Regulation 1935/2004/EC
- Plastic materials intended for contact with foodstuffs Regulation 10/2011/EC

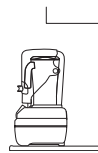
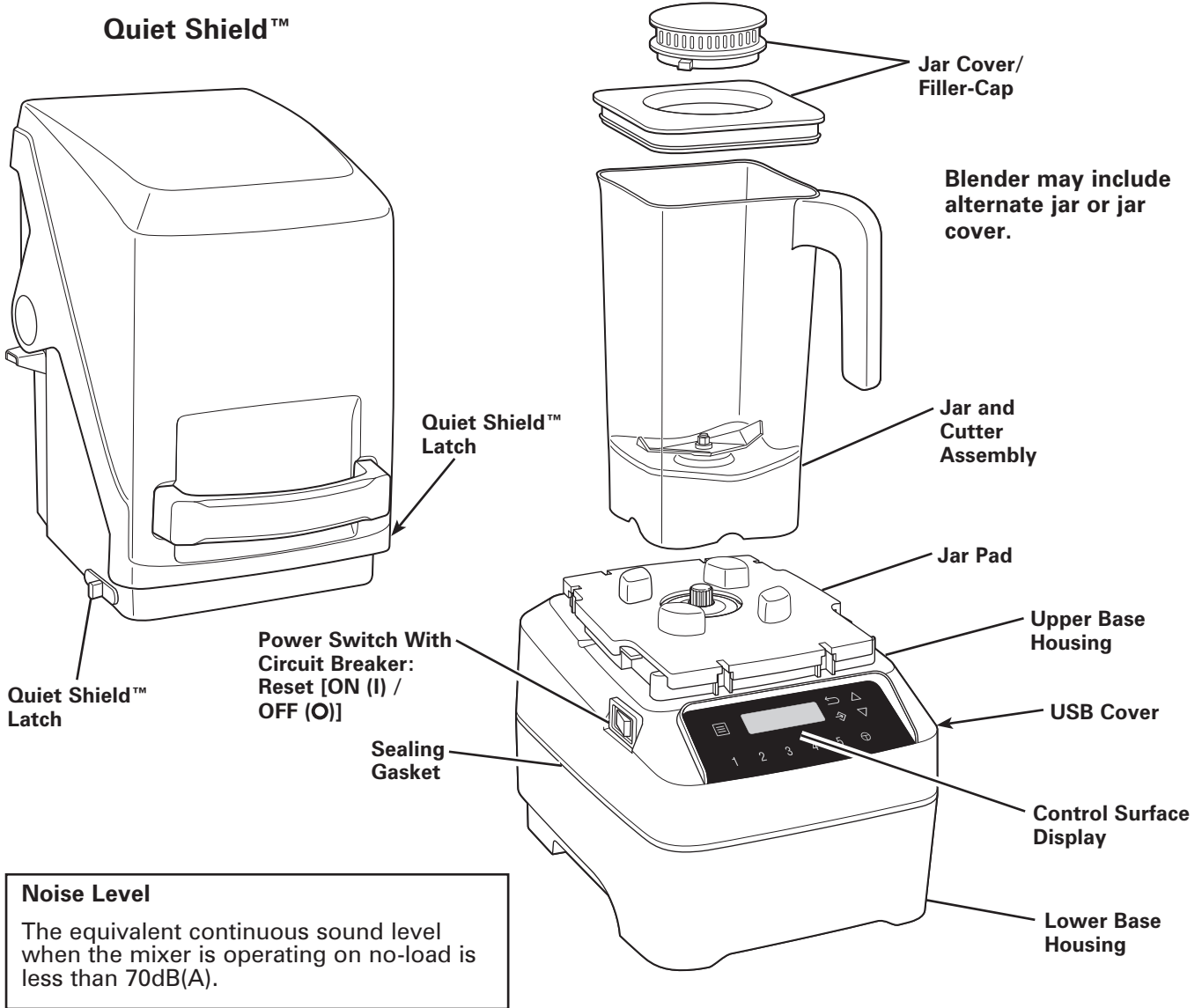


Recycling the Product at the End of Its Service Life

The wheeled bin symbol marked on this drink mixer signifies that this appliance should be taken over by a selective collection system conforming to the Guideline 2012/19/EU (WEEE) so that it can be either recycled or dismantled in order to reduce any impact to the environment. The user is responsible for returning the product to the appropriate collection facility, as specified by your local code. For additional information regarding applicable local laws, please contact the municipal facility and/or local distributor.

Parts and Features

The parts and features for the blender are shown on this page. Your blender is designed for blending and mixing beverages.



104



105

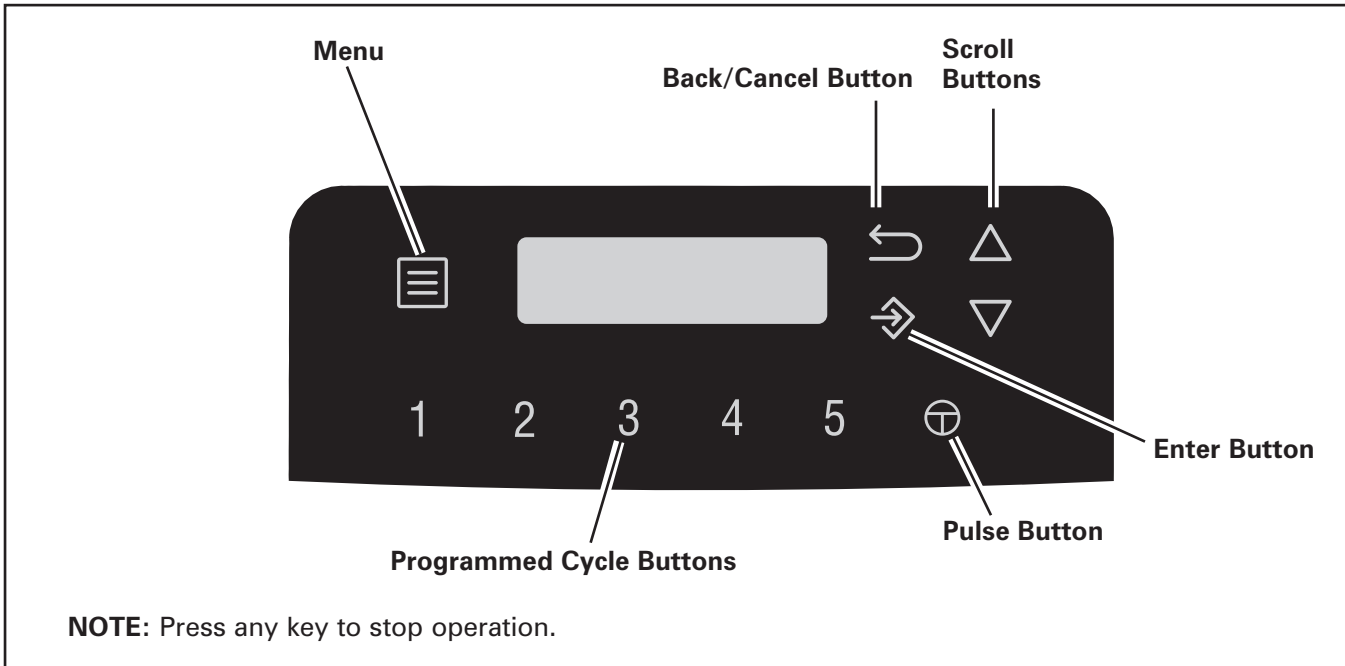


106

Technical Services

For assistance or replacement parts, call or email Technical Services:
 +1-910-693-4277, commercial.support@hamiltonbeach.com
 APAC Region: +86-400-930-2722, hbcapac.support@hamiltonbeach.com
www.hamiltonbeachcommercial.com

Control Surface



Blender Operation – Quick Start Guide

1. Read Important Safety Instructions and Warning Symbol Explanations before use.
2. Place the blender on a dry, level surface.
3. Make sure the power switch is OFF (○). Plug the blender into a grounded 3-prong electrical outlet.
4. Place the container on the base with ingredients and container lid in place. Close quiet shield door.
5. Turn the blender on by pressing the Power Switch marked Reset [ON (I) / OFF (○)]. The red LED switch indicates that power is ON (I).
6. Select the desired function.
7. Use any button to stop operation.

Using the Controls

Information and Settings

Press menu button, scroll up or down, and then press Enter to select the options below.
Press Enter button to confirm. Press Back/Cancel Button for previous screen.

ASSIGN BLEND SET	Smoothie	Each of these blend sets has five different cycles for drink type listed. Selecting a blend set will automatically populate buttons 1 through 5.
	Ice Cream	
	Coffee	
	Bar Drinks	
	Juice	
	Multipurpose	
ASSIGN BLEND CYCLE	Standard	Choose from 30 preloaded programs; assign to buttons 1-5.
	Custom	Choose from programs uploaded from USB; assign to buttons 1-5.
SET PULSE SPEED	Press scroll buttons to select speed.	
JAR SENSOR	Enable	
	Disable	
SLEEP MODE ON/OFF	Enable	
	Disable	
SET SLEEP MODE TIME	Use scroll buttons to change time.	
RUN COOL-DOWN CYCLE	Only cooling fan will run; motor will not run.	
ENABLE/DISABLE BUTTONS	Select which button to remove from display.	
LOAD CUSTOM PROGRAM	Insert USB card within 30 seconds; follow instructions on display.	
LOAD LANGUAGE FILE	Insert USB card within 30 seconds; follow instructions on display.	
RESET FACTORY DEFAULTS	Restore all programs and options to factory defaults.	
TECHNICAL SERVICES	Press Enter for contact information.	
CHANGE LANGUAGE	Press to change language.	
CHANGE DATE/TIME	Press to change date and time.	
DIAGNOSTICS INFORMATION	Press to display diagnostics or download to USB.	

Troubleshooting Guide

Blender fails to start or stops while it is running and display is blank.

- Make sure that the power switch is in the ON (Reset) position and is illuminated red.
- Check to see if unit is securely plugged into an electrical outlet of the proper voltage and frequency.
- Check to see if the fuse for the electrical outlet has blown or if the power switch has tripped.
- This blender is equipped with motor overload protection. If the motor stops during operation due to overheating, unplug and allow the blender to cool down for 15 minutes. Plug blender back in after 15 minutes to resume normal operation.

Blender fails to start or stops while it is running; message appears in display.

- Make sure that the jar is seated properly on the blender base.
- Blender will not operate unless jar is properly seated.
- Make sure Quiet Shield™ is down and in correct position.

Blender fails to start or stops while it is running.

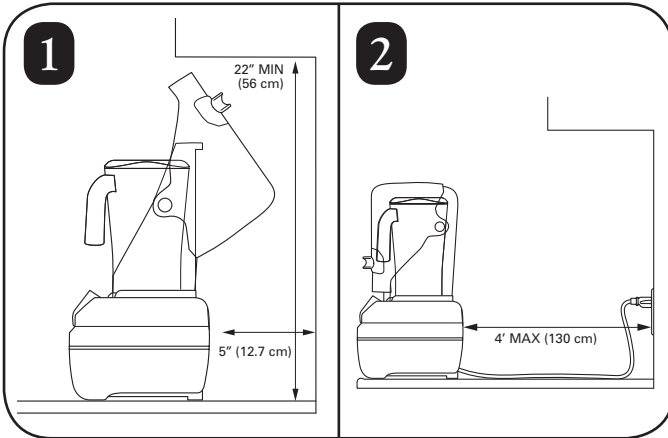
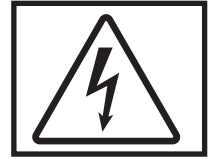
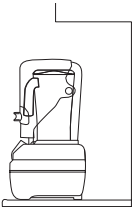
- Thermal overload protection has been tripped. Attempt to run cool-down cycle. Follow instructions in display.
- This blender is equipped with motor overload protection. If the motor stops during operation due to overheating, unplug and allow the blender to cool down for 15 minutes. Plug blender back in after 15 minutes to resume normal operation.

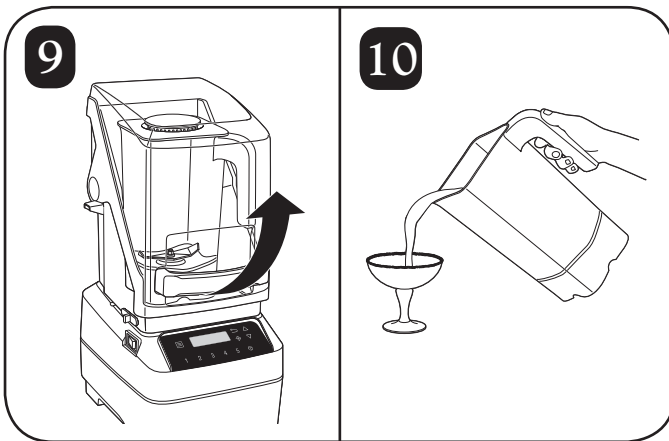
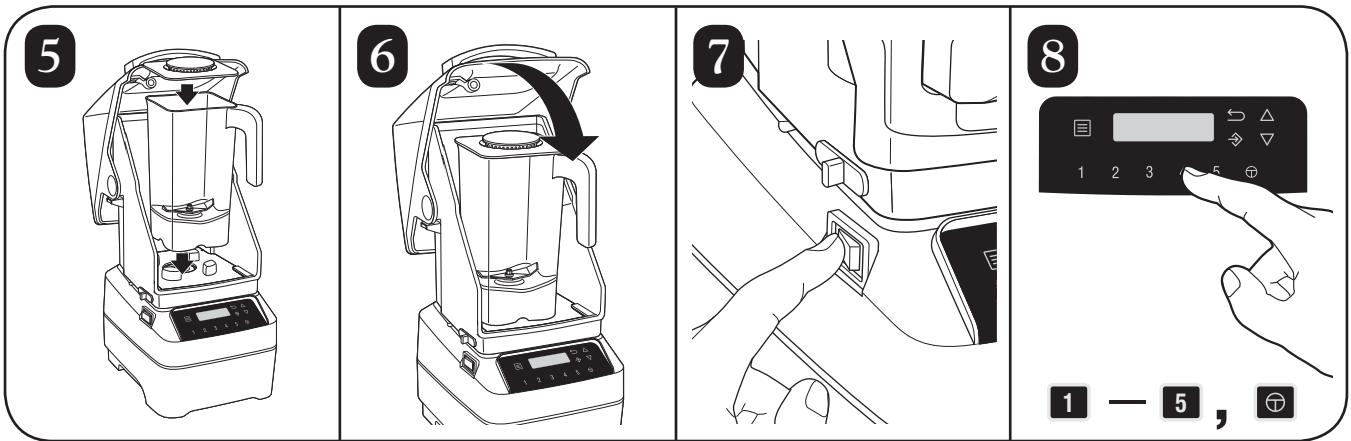
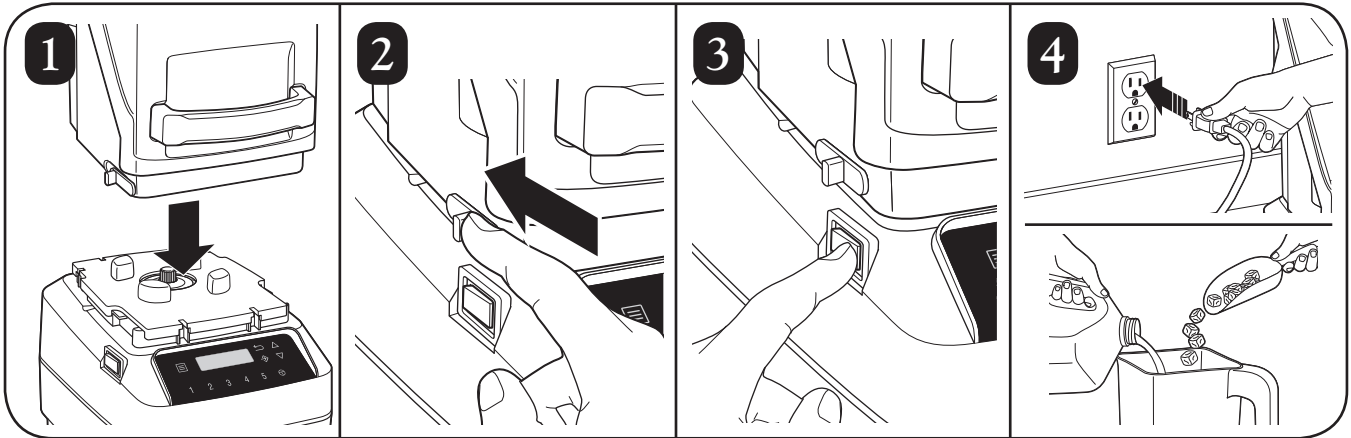
Unit does not respond to button commands or error message appears in display.

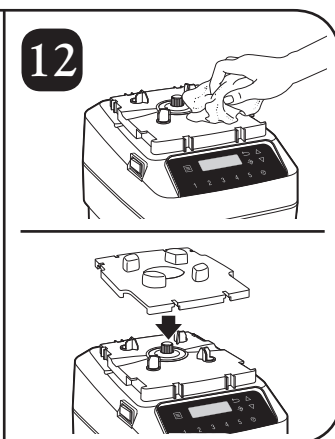
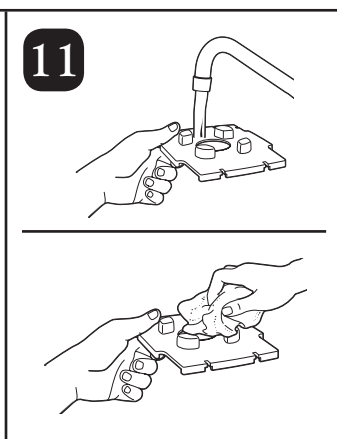
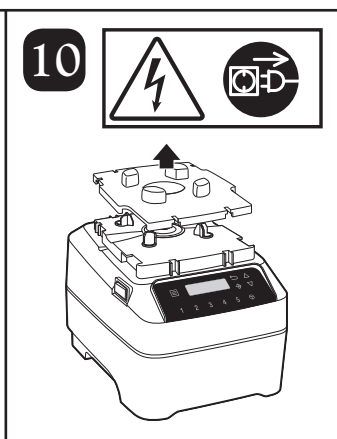
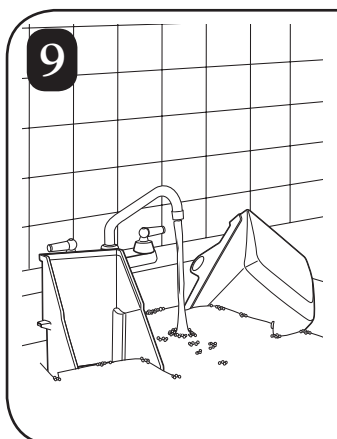
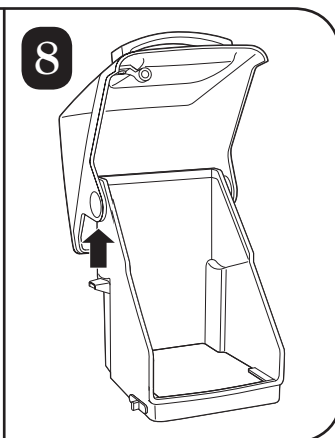
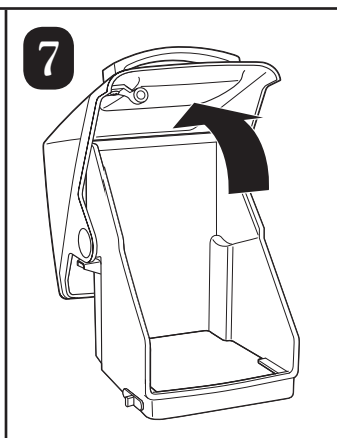
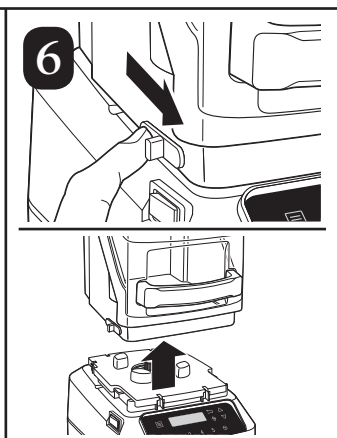
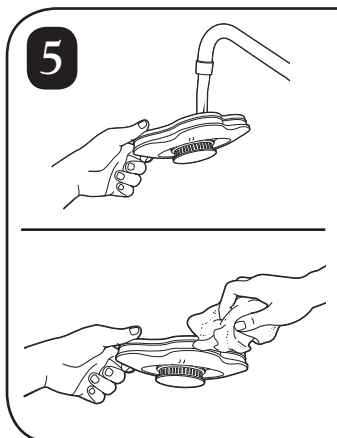
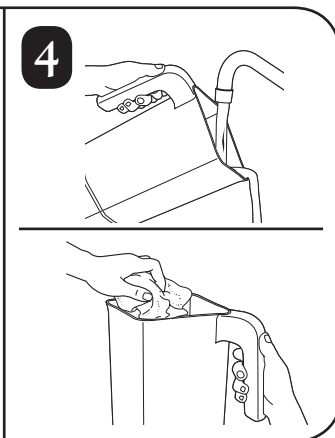
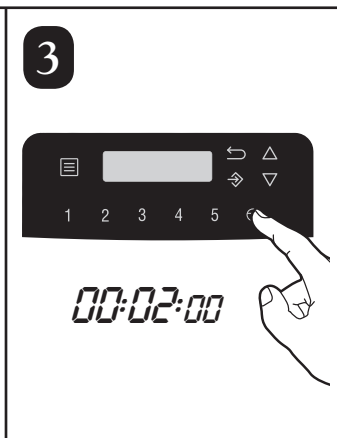
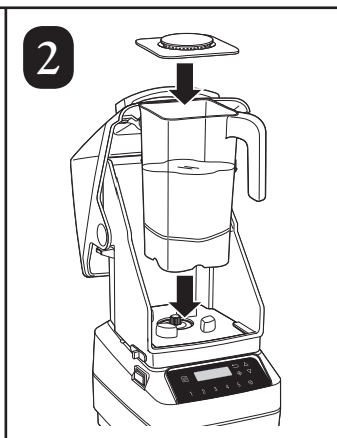
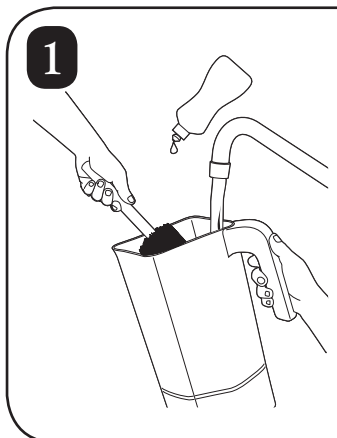
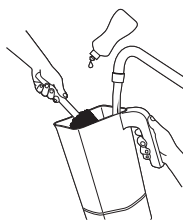
- Turn the power off and back on using the power switch to reset the controls.
- Turn the power off and back on using the power switch. If the error message still appears, the unit will need to be serviced.

Ingredients will not mix properly.

- Check to see if enough liquid has been added to the ingredients. Mixture should be fluid and free-running at all times.
- Solid pieces are too large.
- Container is too full. Do not fill past highest graduation marking.
- Cutter assembly blades are not sharp or are damaged. Inspect container and cutter assembly daily. Replace cutter assembly at least yearly or sooner if cutter assembly appears worn or damaged.
- Check to see if cutter assembly is installed properly.
- Select speed to create a fluid blend.







Notes



4421 Waterfront Drive
Glen Allen, VA 23060

www.hamiltonbeachcommercial.com

840276600
7/17