

REVOLUTION™

Hamilton Beach®
COMMERCIAL

GB	Ice Shaver/Blender Operation Manual (2)
FR	Râpe-glace/mélangeur Manuel d'utilisation (14)
ES	Granizadora de Hielo/Licuada Manual de operación (26)
PT	Triturador de gelo/Liquidificador Manual do Utilizador (38)
IT	Raschietto/Miscelatore Manuale per il funzionamento (50)
DE	Ice Shaver/Blender Bedienungsanleitung (62)
NL	Shaver/Blender Gebruiksaanwijzing (74)
DK	Ice shaveren/blenderen Betjeningsvejledning (86)
SE	Ice Shaver/Blender Bruksanvisning (98)
NO	Isskraperen/Mikseren Brukerhåndbok (110)
GR	Μπλέντερ/μηχανή θρυμματισμού πάγου Εγχειρίδιο λειτουργίας (122)
RU	Блендер/измельчитель льда Руководство по эксплуатации (134)
TU	Buz Mikseri/Blender Kullanım Kılavuzu (146)
BR	Triturador de Gelo/Liquidificador Manual de Instruções (158)
CN	削冰器/搅拌器 操作手册 (170)
JP	アイスシェーバー/ブレンダー 操作マニュアル (182)
KR	빙수기 / 믹서 사용 설명서 (194)
SA	مبشرة الثلج / الخلاطة دليل التشغيل (217)

IMPORTANT SAFETY INSTRUCTIONS

WARNING – When using electrical appliances, basic safety precautions should be followed, including the following:

- Read the Operation Manual before using blender. Keep Operation Manual handy.
 - Before first use, wash container assembly in hot, soapy water. Do NOT place in dishwasher.
 - Plug into a grounded outlet.
 - Do not remove ground.
 - Do not use an adapter.
 - Do not use an extension cord.
 - Disconnect power before cleaning or servicing.
 - To reduce risk of personal injury, unplug cord from outlet when not in use, and before putting on or taking off parts.
 - Unplug the blender and inspect the power cord insulation for cracks on a weekly basis. Refer to “Technical Service” for repair or replacement.
 - To protect against electrical shock, do not immerse cord, plug, or blender base in water or any other liquid.
 - Do not spray the base with a high-pressure spray gun.
 - Extreme caution must be used when moving an appliance containing hot oil or other hot liquids.
 - Do not use appliance for other than intended use. The Ice Shaver/Blender is designed for blending and mixing beverages and frozen desserts.
 - Not intended for use by or near children.
 - Children should be supervised to ensure that they do not play with the appliance.
 - This appliance is not intended for use by persons (including children) with reduced physical, sensory, or mental capabilities, or lack of experience and knowledge, unless they have been given supervision or instruction concerning use of the appliance by a person responsible for their safety.
 - The use of accessory attachments not recommended by the appliance manufacturer may cause injuries.
 - To reduce risk of personal injury and to prevent damage to blender or container and cutter assembly, DO NOT insert utensils into blender container while operating blender.
 - Do not store any kitchen utensils in the container because the blender would be damaged if inadvertently turned on.
 - To prevent possibility of serious personal injury, keep hands out of blender container while operating blender. Always operate blender with container cover in place.
 - Avoid contacting moving parts. Switch off the appliance and disconnect from power supply before changing accessories or approaching parts that move in use.
 - Blades are sharp. Handle carefully.
 - If cutter assembly blades are loose, discontinue use immediately and replace cutter assembly. Do not attempt to repair or tighten cutter assembly.
 - Inspect container and cutter assembly daily. Do not use broken, chipped, or cracked container. Check cutter for wear, nicks, or broken blades. Do not use broken, loose, or cracked cutting blades.
 - Do not use outdoors.
 - This appliance is intended for short periods of operation, with a rated operating time of 3 minutes.
 - Do not leave blender unattended while it is operating.
 - To prevent damage to blender, container, or cutter assembly, DO NOT move or shake blender while in operation. If blending action stops during operation, turn blender OFF (O), remove container from base, remove container cover, and use a thin rubber spatula to push mixture towards cutters.
 - When blending hot liquids, remove center-piece of two-piece lid. Hot liquids may push lid off jar during blending. To prevent possible burns: Do not fill blender jar beyond the 1 quart (1 liter) level. With the protection of an oven mitt or thick towel, place one hand on top of lid. Keep exposed skin away from lid. Start blending at lowest speed.
 - Always operate blender with container cover in place.
 - Do not fill the ice hopper with anything other than ice.
 - Do not exceed the maximum capacity. The maximum capacity equals the ounces (liters) listed on the container, and significantly less with thick mixtures.
 - Do not use more than 5 cups (1.3 liters) of cleaning solution when cleaning the ice hopper. See “Sanitizing”.
 - The blender is designed with motor overload protection. If the motor stops during operation due to overheating, then unplug and allow the unit to cool down for 15 minutes. Plug unit back after 15 minutes to resume normal operation.
 - The normal function of this product may be disturbed by strong electromagnetic interference. If this occurs, simply reset the product and resume normal operation by following the operation manual. If normal operation cannot be resumed, place the product in a different location.
 - Do not operate any appliance with a damaged cord or plug or after the appliance malfunctions, or is dropped or damaged in any manner. Refer to “Technical Service” for instructions on examination, repair, or electrical or mechanical adjustment.
 - If the supply cord of this appliance is damaged, it must be replaced by the manufacturer or its service agent or a similar qualified person.
- UK ONLY:** If fitted with a non-rewirable U.K. plug, the 13 amp fuse approved by ASTA to be B.S. 1362 must be used. If you need a replacement fuse carrier, it must be replaced with the same colour coded carrier with the same markings. Fuse covers and carriers can be obtained from approved service agents.


- SAVE THESE INSTRUCTIONS -

Safety Alert Symbols


The following safety alert symbols are used throughout this manual to alert you to the safety hazards described below.




Electrical Shock Hazard
Disconnect power before cleaning blender base.
Failure to follow these instructions can result in death or electrical shock.



Electrical Shock Hazard
Plug into a grounded outlet.
Do not remove ground.
Do not use an adapter.
Do not use an extension cord.
Failure to follow these instructions can result in death, fire, or electrical shock.



Cut Hazard
Always place cover on container when blending.
Do not put hands, spoons, or other utensils in container when blending.
Failure to follow these instructions can result in broken bones, cuts, or other injuries.



Burn Hazard
Always use caution when blending hot contents.
Failure to follow these instructions can result in burns.

Technical Service
For assistance or replacement parts, call our
Technical Service number:
++910-693-4277
www.commercial.hamiltonbeach.com

Sanitizing

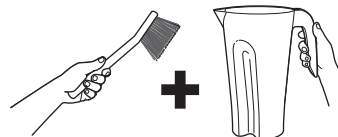
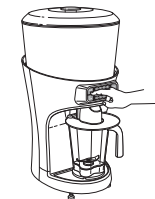
Sanitize before first use and after each use with a sanitizing solution of 1 tablespoon (15 ml) of household bleach per 1 gallon (3.8 liter) of clean, cool water (60°F/16°C), mixed according to the instructions on the bleach.

Blender container

1. Fill container with sanitizing solution, replace cover and filler cap and hold PULSE button for 2 minutes. Empty container.
2. Wipe exterior with soft cloth dampened with sanitizing solution.
3. Immerse cover and filler cap in sanitizing solution for 2 minutes.
4. Place empty container on base and press PULSE for 2 seconds to remove any moisture from the cutter assembly.
5. **When ready to use**, rinse with clean water.

Ice hopper

1. Remove the ice hopper cover and lift out the inner hopper.
2. Loosen the thumbscrew on the agitator assembly and lift the assembly up and out of the shaving pool.
3. Remove the ice chute by pressing the unlock button and pulling down.
4. Wipe the inside of the shaving pool with a clean soft cloth dampened with sanitizing solution.
5. Rinse the ice chute, the agitator assembly and inner hopper in sanitizing solution, and allow to air dry. Wipe the shaving pool, shaver blade, and ice deflector with a clean, soft cloth dampened with sanitizing solution.
6. Once all parts are dry, reassemble the agitator, inner hopper, and ice chute by reversing steps 1–3.

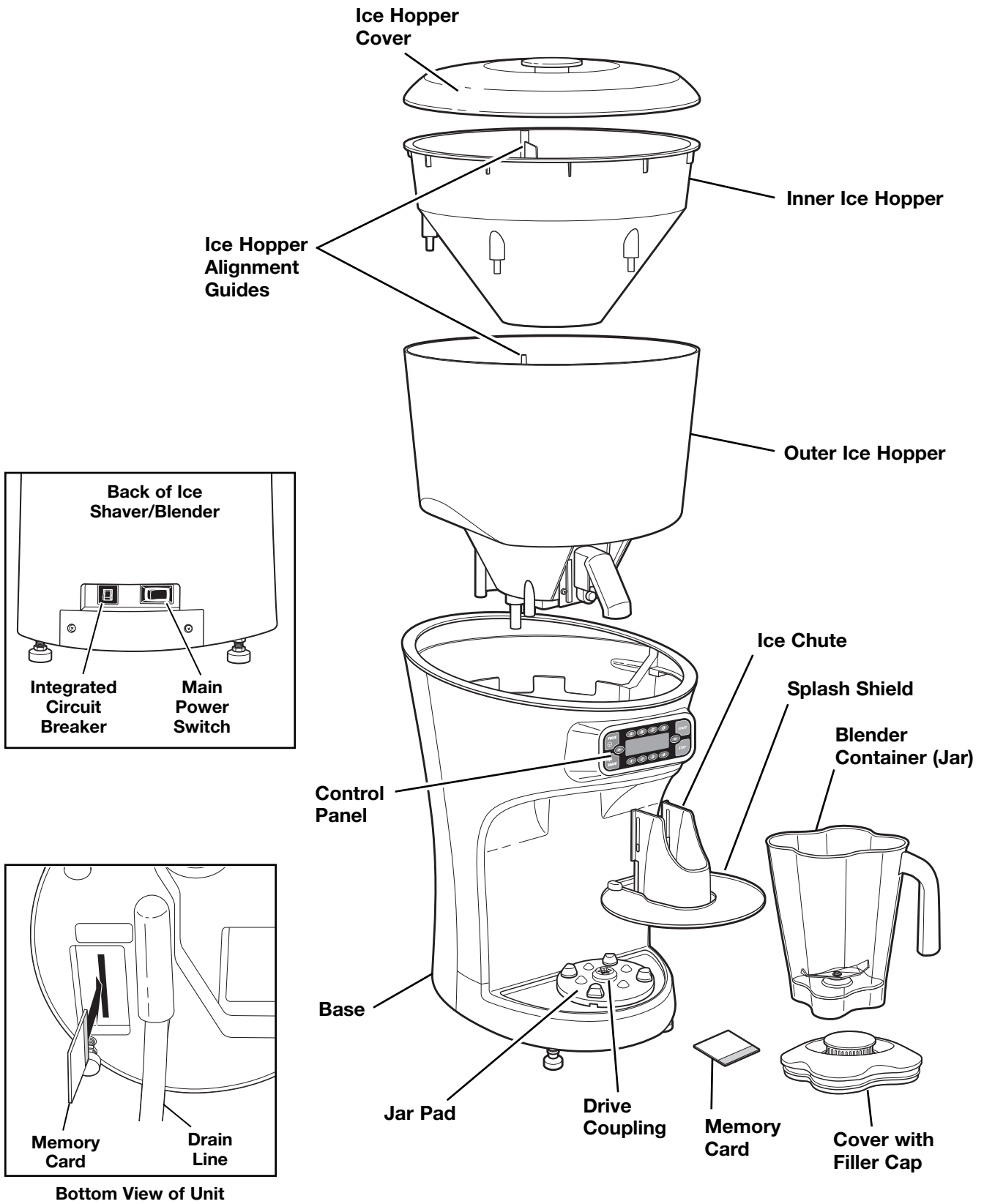


INSTRUCTIONS FOR PROPER DISPOSAL OF THIS PRODUCT PURSUANT TO THE EUROPEAN UNION'S DIRECTIVE ON ELECTRICAL WASTE

Please do not dispose of any electrical equipment as ordinary waste. Help conserve natural resources and protect the environment: when you have finished using this product, please dispose of it at your local waste collection or recycling center in the area reserved for electrical equipment. Contact your local authority to find the nearest waste collection centre. To remind you to dispose of this product responsibly and separately from ordinary waste, it is marked with the symbol of a crossed-out trash bin.



Parts and Features



Control Panel

Serving Size Buttons A-D
Press **A-D** to select the desired serving size.

Scroll up/down buttons
Press the **▲** or **▼** button to scroll through status and diagnostic messages.

PULSE button
Blender jar must be in place. Allows manual blender operation. Press and hold to run the blender on high speed. Release to stop blender.

SHAVE button
Allows manual ice shaver operation. Press and hold to shave ice, release to stop ice shaver.

Number of Servings Buttons 1-4
Press **1-4** to select the desired number of servings (1 to 4).

START button
Starts operation of the selected cycle.

STOP button
Stops operation of the selected function. Does not shut off power to the unit.

Display
displays status messages

Display messages
The screen can be used to display important diagnostic and troubleshooting information, as well as operating information. Press the **▲** or **▼** button to scroll through status and diagnostic messages.

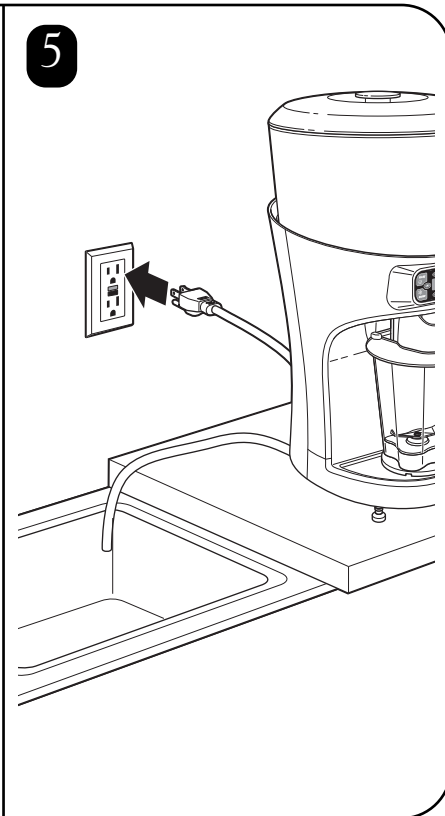
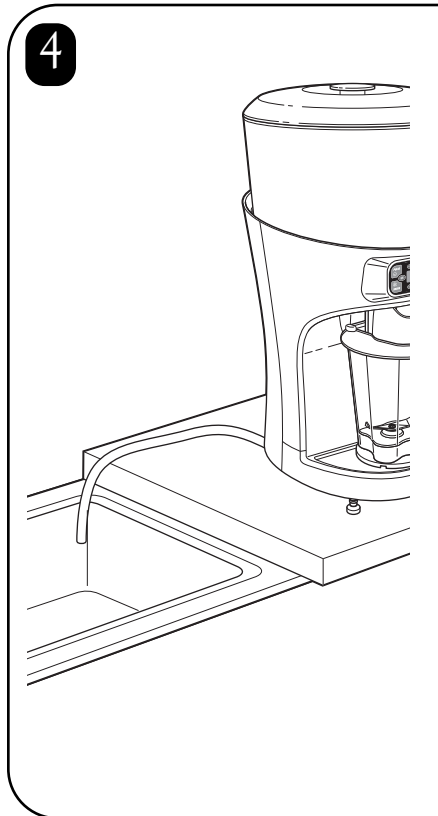
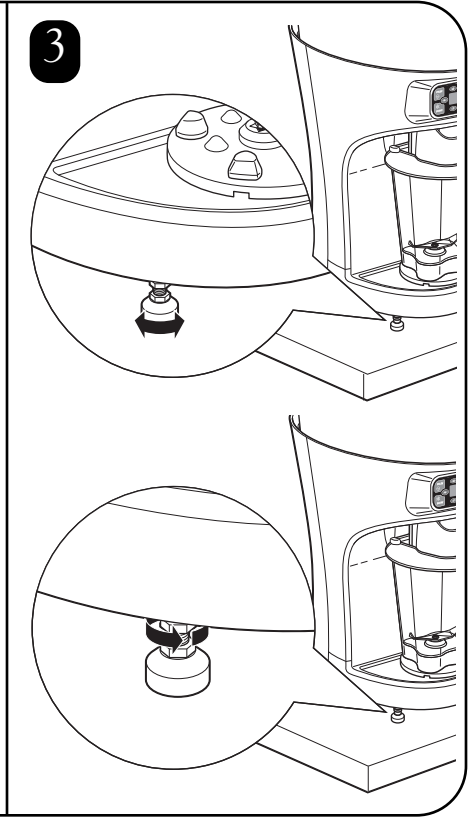
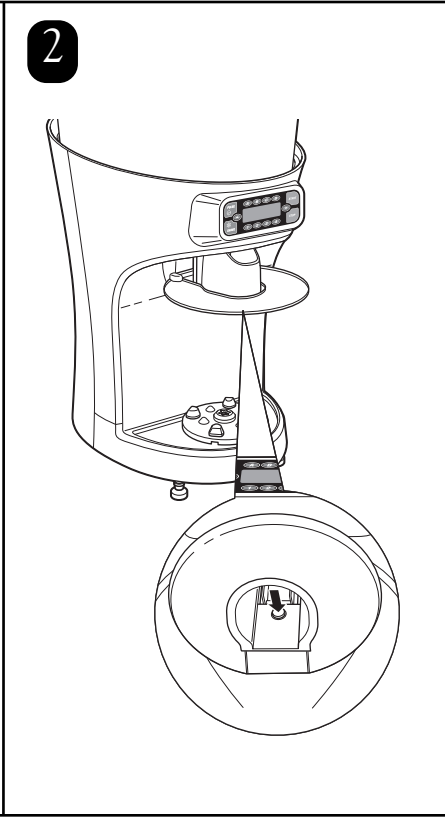
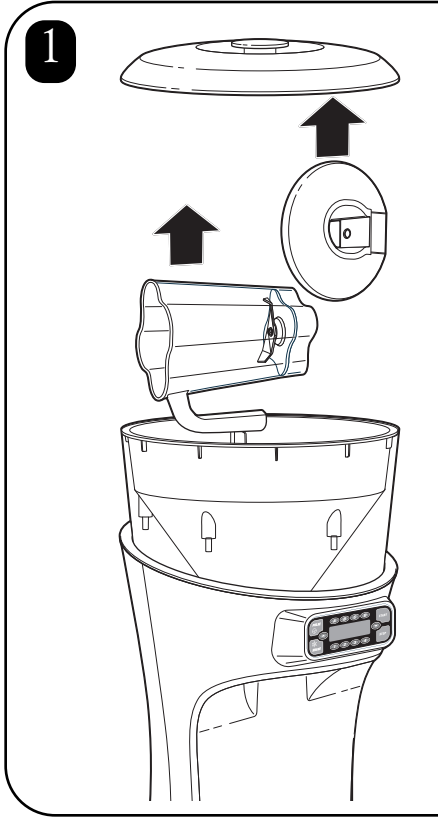
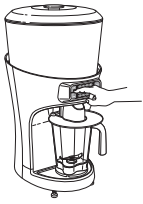
For Example:

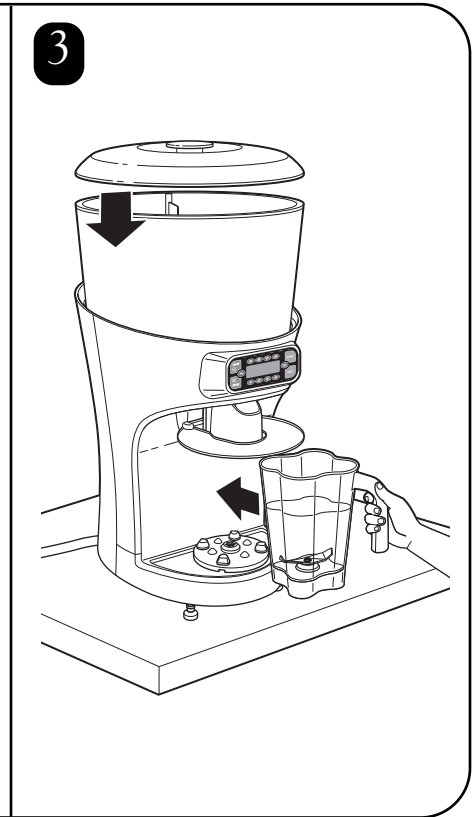
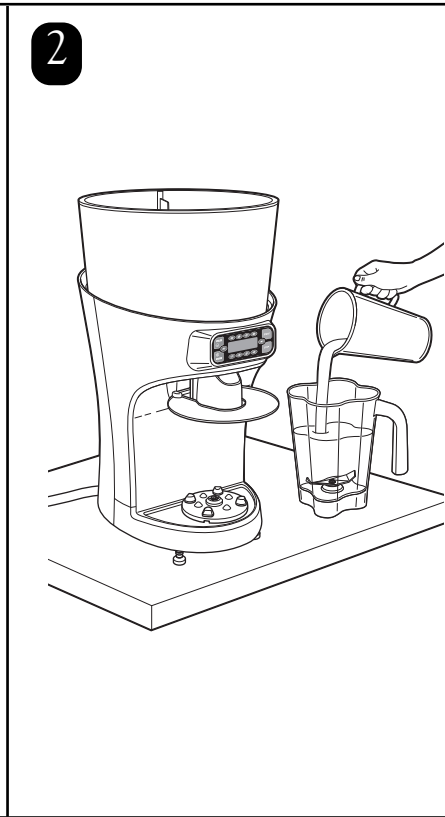
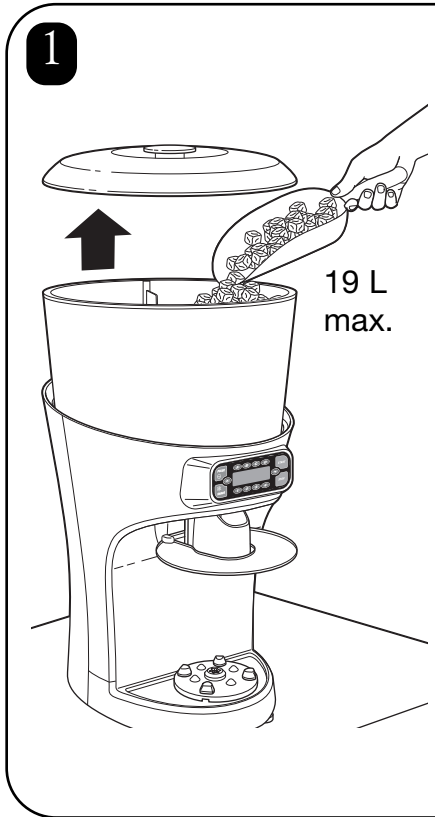
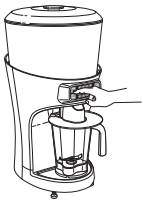
To Display Cycle Count:
While the unit is not in operation, press the **▲** or **▼** button to display the cycle counts.

TOTAL SHAVE/BLEND
CYCLES - 999999

To Enable or Disable the Drain Sensor:
With this message displayed, press the pulse to select between enabled and disabled.

DRAIN SENSOR
ENABLED





4 Automatic operation:

Select serving size:

A B C D

350 415 475 600 mL
SELECT SIZE
OF DRINKS
1DR 2DR 3DR 4DR

Select serving quantity:

350 415 475 600 mL
SELECT NUMBER
OF DRINKS
1DR 2DR 3DR 4DR

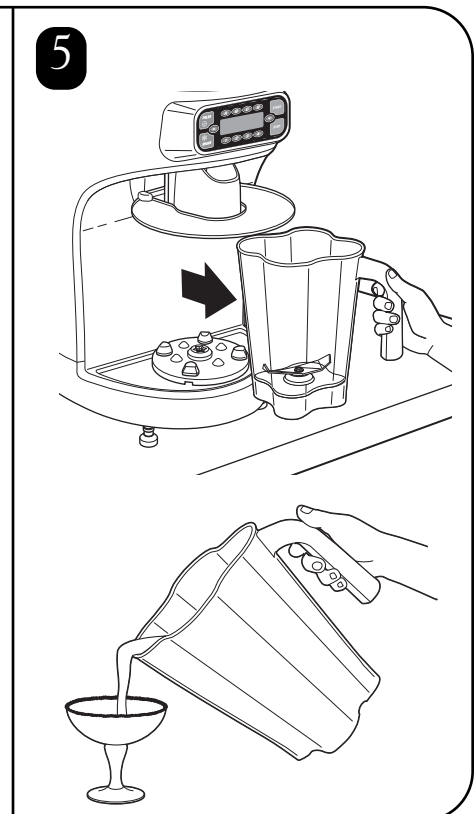
1 2 3 4

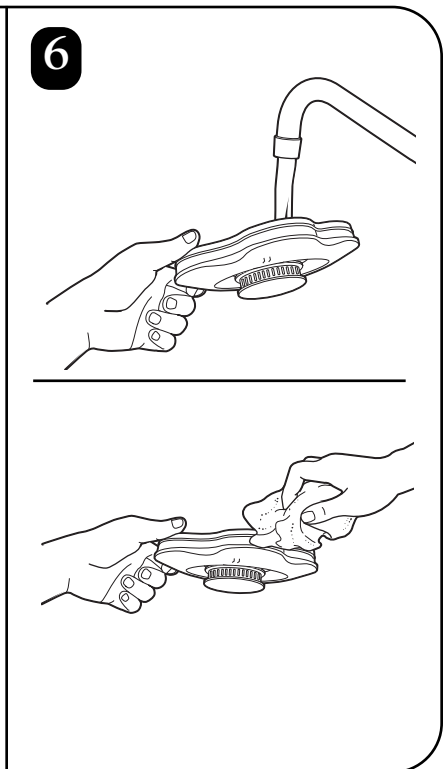
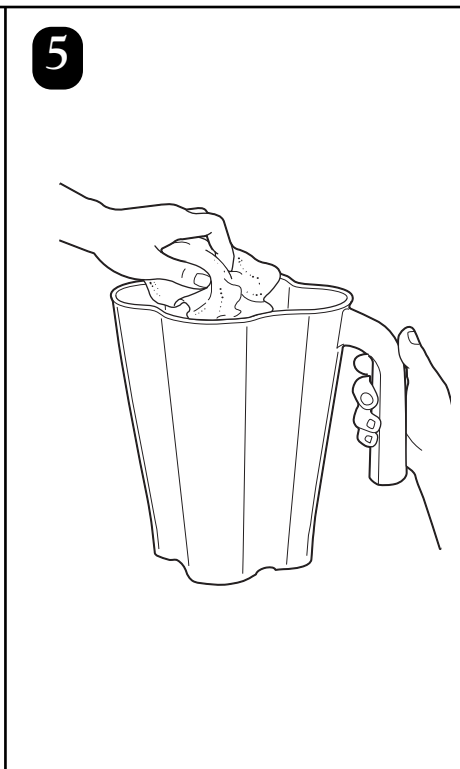
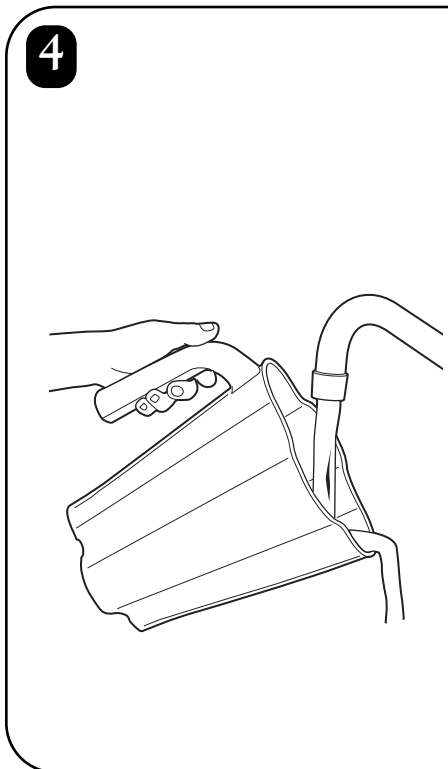
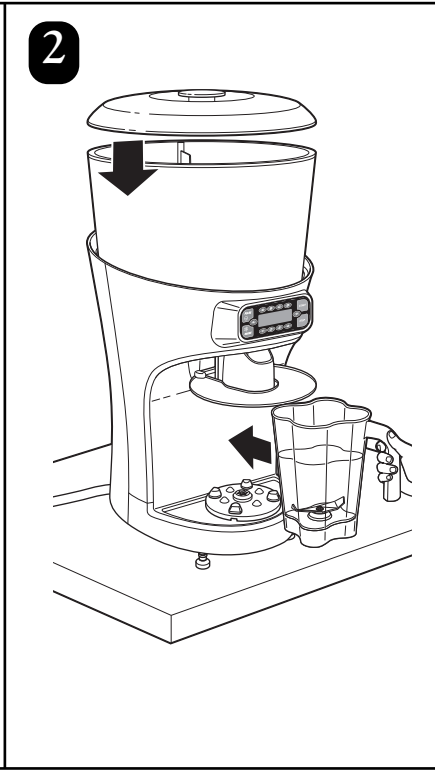
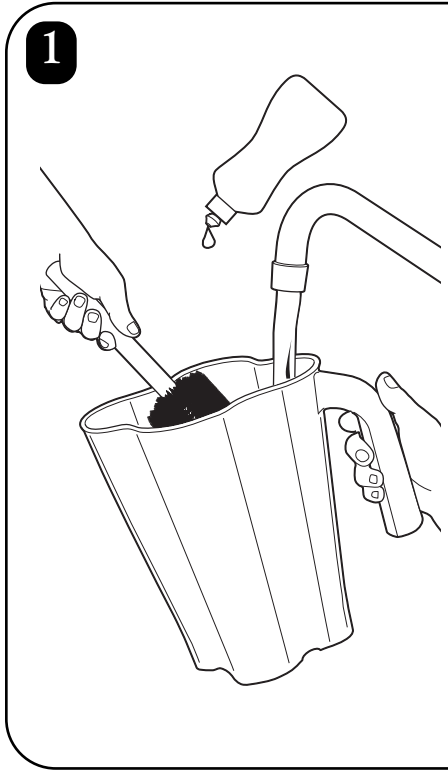
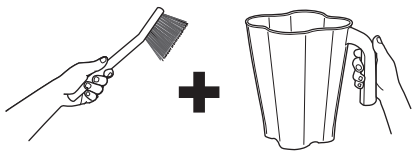
START

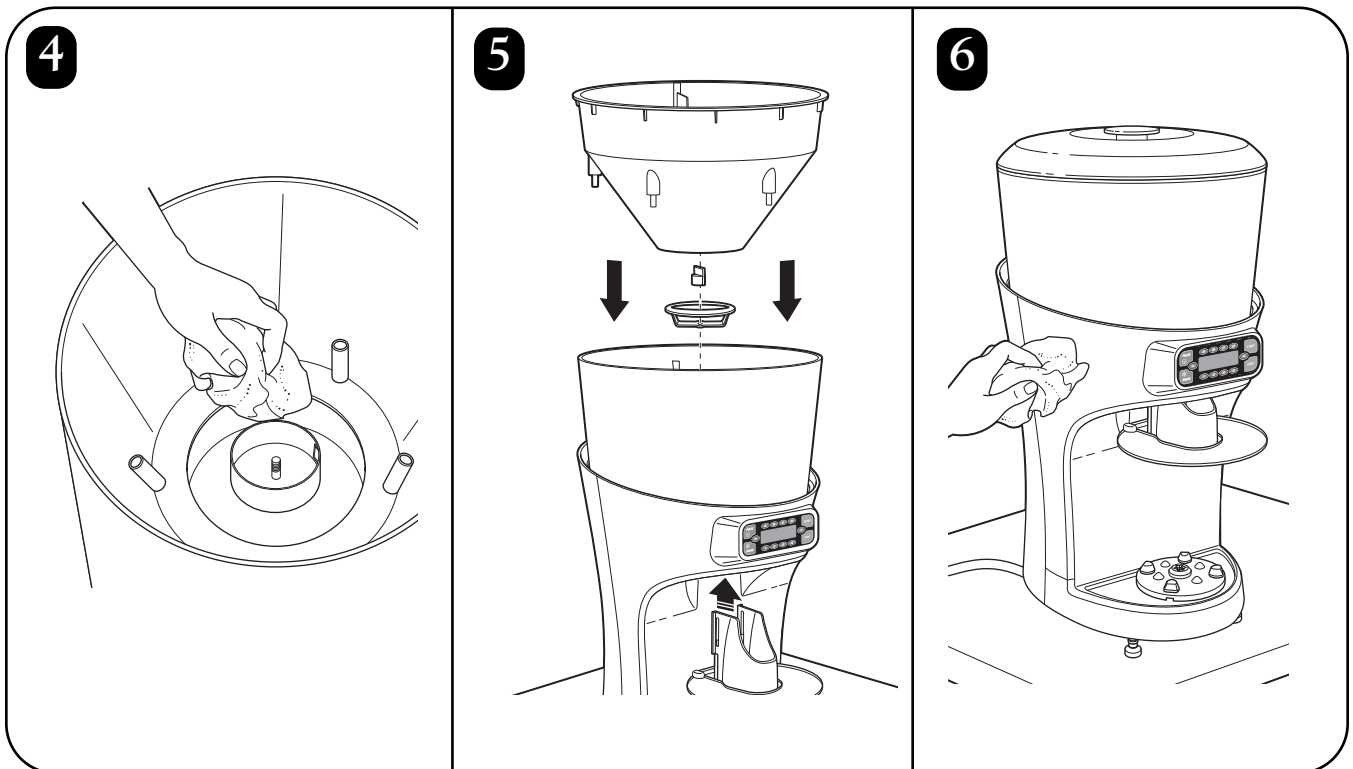
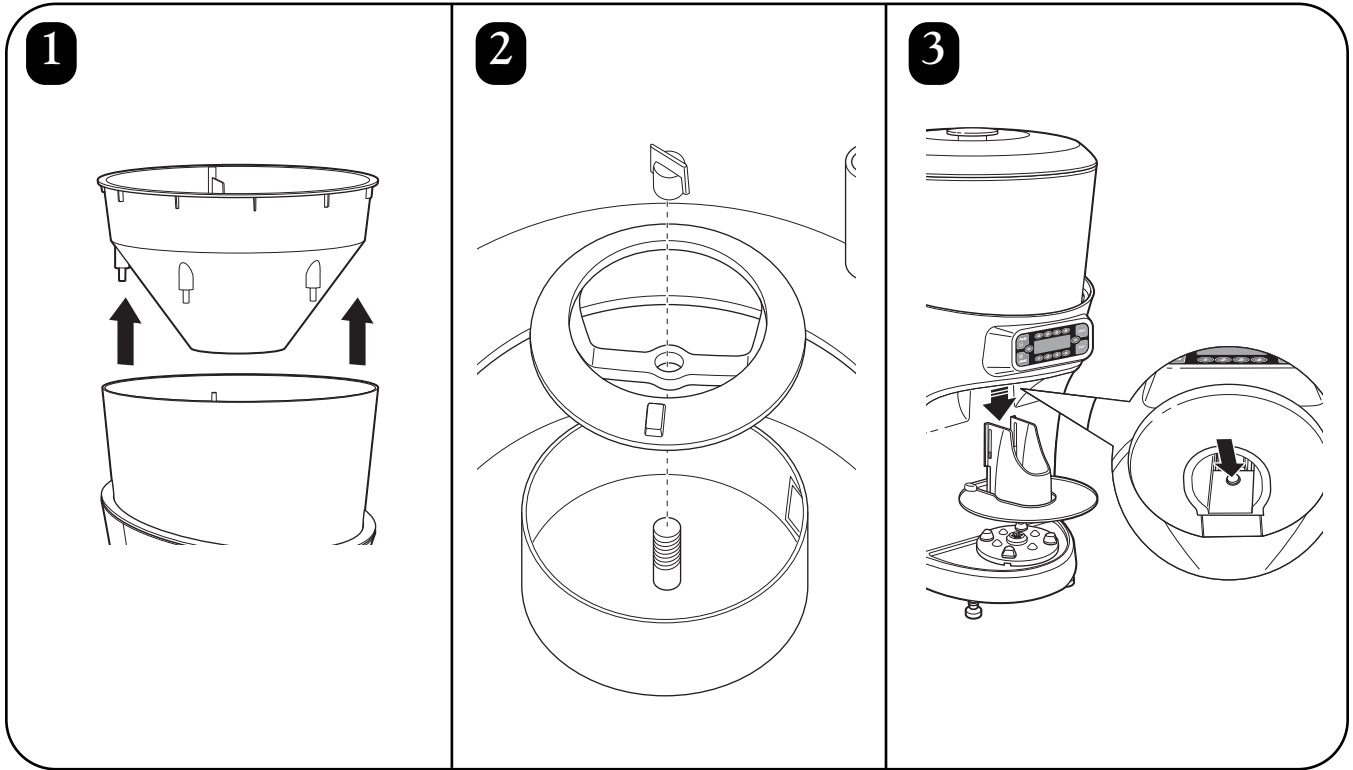
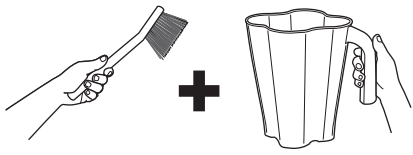
Manual operation:

SHAVE

PULSE







Start-Up Messages

Start Up Messages

Once the unit has been set-up in the desired location, move the main power switch to the ON (I) position.

The following message should appear in the display:

```
LOADING  
SETTINGS
```

Once initial settings have loaded, the display will show the following standby message:

```
350 415 475 600 mL  
HAMILTON BEACH  
COMMERCIAL  
1DR 2DR 3DR 4DR
```

NOTE:

If the memory card has not been installed, or is not properly installed, the following messages will appear:

```
TURN OFF MAIN POWER  
SWITCH AND INSERT  
MEMORY CARD
```

If this message appears, turn the unit off, unplug it, and make sure that the memory card is properly installed. Then plug the unit back in and restart it.

Diagnostic Messages

Diagnostic Messages

The ice shaver/blender control system has a number of safety and diagnostic features. Some of these features are monitored by sensors, such as the jar pad sensors, drain sensor, and safety interlocks on the ice hopper.

```
INNER HOPPER  
NOT IN PLACE
```

Cycle Counts

When the unit is in standby mode, pressing the ▲ and ▼ buttons will scroll through status and diagnostic messages. These include the current cycle count and the number of cycles remaining in the warranty.

```
TOTAL SHAVE/BLEND  
CYCLES - 999999
```

```
CYCLES REMAINING  
IN WARRANTY - 999999
```

Service Messages

Others, such as service messages, are based on operating cycle count, and are designed to let you know when parts subject to wear should be replaced. The lifespan of these parts is based on number of cycles under normal operating conditions. Pressing the STOP button will allow the unit to run 100 cycles before the message reappears. Once service has been performed, press PULSE to set the cycle count back to zero for that service item.

```
SERVICE MESSAGE  
REPLACE  
CUTTER ASSEMBLY
```

Troubleshooting Guide

Problem . . .	Solution . . .
Unit will not run or stops while it is running and cannot be restarted.	<ul style="list-style-type: none"> • Check to see if unit is securely plugged into an electric outlet. • Check to see if the fuse for the electric outlet has blown or if a circuit breaker has tripped. • Check to see if the circuit breaker on the back of the unit has tripped. • Check to make sure that the ON/OFF switch is in the ON (I) position. • Check to make sure that the memory card is installed properly. • The motor has overheated and activated the thermal overload protector. Turn off the unit and allow it to cool for 15 minutes.
Quantity of dispensed ice is not consistent.	<ul style="list-style-type: none"> • Check to make sure that the unit is level and sitting on a solid, sturdy surface.
Unit is flooding or water leaking onto counter.	<ul style="list-style-type: none"> • Make sure that the end of the drain hose is not under water or blocked. • Make sure that the drain hose is properly installed and routed. See Preparation.
Increased blender vibration or noise, or leaking from blender jar base.	<ul style="list-style-type: none"> • Check blade assembly for loose or damaged blades. Replace if necessary.

Troubleshooting Guide – Status Messages

Displayed Message . . .	Solution . . .
BLENDER MOTOR OVERHEAT-TURN OFF MAIN POWER SWITCH	<ul style="list-style-type: none"> • Electric blender motor is too hot. This can be caused when the blender jar is too full or when blending very thick ingredients. Reduce the quantity of product in the jar and allow several minutes for the motor to cool before blending.
INNER HOPPER NOT IN PLACE	<ul style="list-style-type: none"> • There is a safety interlock on the inner ice hopper. Make sure that the inner hopper is properly in place and aligned. See Parts and Features page for proper alignment.
HOPPER LID NOT IN PLACE	<ul style="list-style-type: none"> • There is a safety interlock on the ice hopper lid. Make sure that the lid is properly in place.
CHECK DRAIN	<ul style="list-style-type: none"> • There is a sensor on the drain that will indicate if water has backed up in the drain. Check the drain line for blockages or kinks.
CONTAINER CAPACITY EXCEEDED	<ul style="list-style-type: none"> • The drink size and number of drinks have exceeded 64 ounces (1.9 L).
JAR NOT IN PLACE	<ul style="list-style-type: none"> • Make sure that the container jar is properly seated on the blender base. The jar pad sensors prevent the blender motor from starting if the container jar is not properly seated.

Troubleshooting Guide – Status Messages

Displayed Message. . .	Solution . . .
SERVICE MESSAGE REPLACE CUTTER ASSEMBLY	<ul style="list-style-type: none"> The blender cutter assembly should be replaced whenever it is worn or damaged, or when the unit displays the reminder “REPLACE CUTTER ASSEMBLY”.
SERVICE MESSAGE REPLACE SHAVER BLADE	<ul style="list-style-type: none"> The ice shaver blade should be replaced whenever it is worn or damaged, or when the unit displays the reminder “REPLACE SHAVER BLADE”.
SERVICE MESSAGE REPLACE BLENDER MOTOR BRUSHES	<ul style="list-style-type: none"> The unit counts the number of cycles and displays the reminder “REPLACE BLENDER MOTOR BRUSHES” when the expected life span of the blender motor brushes has been reached.
SERVICE MESSAGE REPLACE BLENDER MOTOR BELT	<ul style="list-style-type: none"> The unit counts the number of cycles and displays the reminder “REPLACE BLENDER MOTOR BELT” when the expected life span of the blender motor belt has been reached.
SERVICE MESSAGE REPLACE SHAVER MOTOR BELT	<ul style="list-style-type: none"> The unit counts the number of cycles and displays the reminder “REPLACE SHAVER MOTOR BELT” when the expected life span of the ice shaver motor belt has been reached.
SERVICE MESSAGE REPLACE BLENDER DRIVE ASSEMBLIES	<ul style="list-style-type: none"> The unit counts the number of cycles and displays the reminder “REPLACE BLENDER MOTOR ASSEMBLIES” when the expected life span of the blender drive assembly has been reached.
REVOLUTION SENSOR ERROR	<ul style="list-style-type: none"> The revolution sensor on the shaver motor is not functioning correctly.
SPEED SENSOR FAILURE	<ul style="list-style-type: none"> The speed sensor on the blender motor is not functioning correctly.