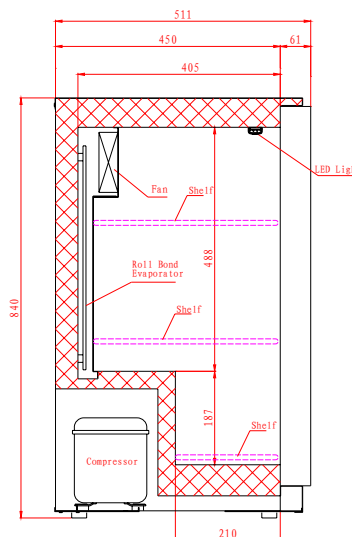


Low Height Bar Bottle Coolers

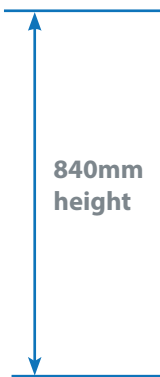
Standard Black, Sliding Doors, 840mm Height



LOWBAR2SL



LOWBAR3SL



FEATURES

- Black laminated exterior; Aluminium stippled interior
- Self closing, double glazed door(s)
- Heavy duty adjustable shelves
- 2 shelves per door
- Lock fitted as standard
- Internal LED illumination

TECHNICAL SPECIFICATIONS

- Controller: Digital controller with temperature display
- Cooling: Fan assisted
- Defrost: Automatic
- Refrigerant: R600a
- Climate Class: 4
- Temperature Range: +4°C ~ +12°C
- Power Supply: 13amp

MODEL	DOOR	CAPACITY (Bottles*)	GROSS CAPACITY	EXT. DIMENSIONS (H x W x D mm)	POWER CONSUMPTION	DECIBELS	WEIGHT (kg)	RRP
LOWBAR2SL	2	168	185L	840 x 903 x 511	140W	54dBA	57	
LOWBAR3SL	3	276	280L	840 x 1353 x 511	270W	59dBA	81	

* based on 275ml bottles

