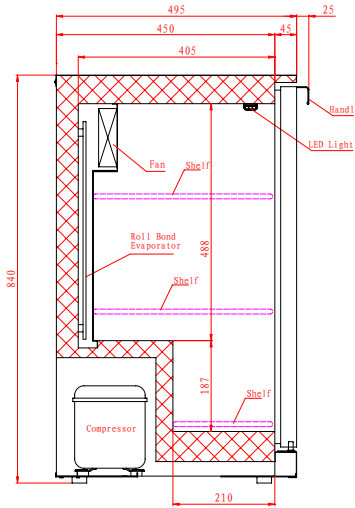


Low Height Bar Bottle Coolers

Standard Black, Hinged Door(s), 840mm Height



LOWBAR1



LOWBAR2



LOWBAR3

840mm height

FEATURES

- Black laminated exterior; Aluminium stippled interior
- Self closing, double glazed door(s)
- Heavy duty adjustable shelves
- 2 shelves per door
- Lock fitted as standard
- Internal LED illumination
- Replaceable door gasket

TECHNICAL SPECIFICATIONS

- Controller: Digital controller with temperature display
- Cooling: Fan assisted
- Defrost: Automatic
- Refrigerant: R600a
- Climate Class: 4
- Temperature Range: +4°C ~ +12°C
- Power Supply: 13amp

MODEL	DOOR	CAPACITY (Bottles*)	GROSS CAPACITY	EXT. DIMENSIONS (H x W x D mm)	POWER CONSUMPTION	DECIBELS	WEIGHT (kg)	RRP
LOWBAR1	1	108	120L	840 x 598 x 520	125W	53dBA	42	
LOWBAR2	2	168	185L	840 x 903 x 520	140W	54dBA	56	
LOWBAR3	3	276	280L	840 x 1353 x 520	270W	59dBA	80	

* based on 275ml bottles

Note: fully opened doors increase width by 5mm each side

