

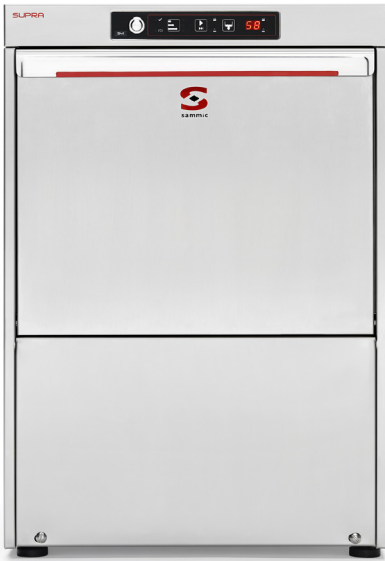


# GLASSWASHER S-41

400x400mm racks. Max. loading height: 280mm



WARE WASHING  
COMMERCIAL GLASSWASHERS



## FEATURES AND BENEFITS

- ✓ For washing glasses, cups, cutlery and small plates.
- ✓ Model with upper wash arm.
- ✓ 3 wash cycles with final cold rinse.
- ✓ Manufactured from catering grade AISI 304 2B stainless steel and incorporating top quality components.
- ✓ Double skinned construction with high efficiency seal on the door with the resulting thermal and acoustic insulation and energy saving. Magnetic, safety door micro-switch.
- ✓ Removable stainless steel rack holders ensure even distribution of wash water without dead zones. Precision positioned water jets guarantee optimum washing result for even the most stubbornly stained glasses. Easy to assemble, boltless rinse spray arms.
- ✓ A double filter system provides effective wash pump protection that is easily removed (for maintenance and cleaning) and replaced, without tools.
- ✓ Inside of the machine with rounded finish: without sharp corners, avoiding accumulation of dirt.
- ✓ Completely rounded, stainless steel wire rack support and guide.
- ✓ Automatic detergent and rinse aid dosing equipment.
- ✓ Electronic control panel with anti-moisture seal.
- ✓ Rinse boiler temperature adjustment and a thermal cycle delay option, guaranteeing a minimum final rinse temperature of 85°C for each and every rinse cycle.
- ✓ Sammic ware washers are designed for easy and fast on-site maintenance.

## SALES DESCRIPTION

Top + bottom wash arms. 3 wash cycles. Cold rinse facility. Option of built-in water softener.

- ✓ Best performance.
- ✓ Optimal washing results.
- ✓ Sturdy and reliable.
- ✓ Thermal and acoustic insulation.
- ✓ Stainless steel, sturdy and resistant washing arms. Don't get damaged because of chemical corrosion.
- ✓ Full optional list.

## INCLUDES

- ✓ Rinse aid pump.
- ✓ Detergent dosing equipment.
- ✓ 1 mixed basket.
- ✓ 1 small cutlery basket.
- ✓ 1 open basket.



SAMMIC, S.L.  
Basiglio, 1 - 20720 ASKOTTA  
www.sammic.com



[www.sammic.co.uk](http://www.sammic.co.uk)

Food Service Equipment Manufacturer

Unit 2, Trevanah Road  
Troon Industrial Park  
LE4 9LS - Leicester

[uksales@sammic.com](mailto:uksales@sammic.com)  
Tel.: +44 0116 246 1900



Project

Date

Item

Qty

Approved

product sheet  
updated 06/03/2018



# GLASSWASHER S-41

400x400mm racks. Max. loading height: 280mm



## SPECIFICATIONS

Basket dimensions: 400 mm x 400 mm

Maximum glass height: 280 mm

Cycle duration: 90 " / 120 " / 150 "

Production baskets/hour: 40 / 30 / 24

Water consumption/cycle: 2.2 l

### Loading

✓ Pump: 240 W / 0.33 Hp

✓ Tank: 1500 W

✓ Boiler: 2500 W

✓ Total loading: 2740 W

✓

### External dimensions (WxDxH)

✓ Width: 490 mm

✓ Depth: 530 mm

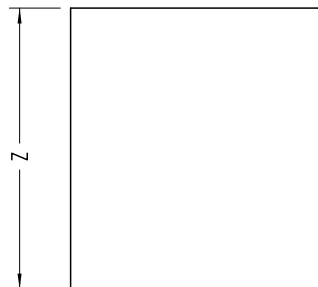
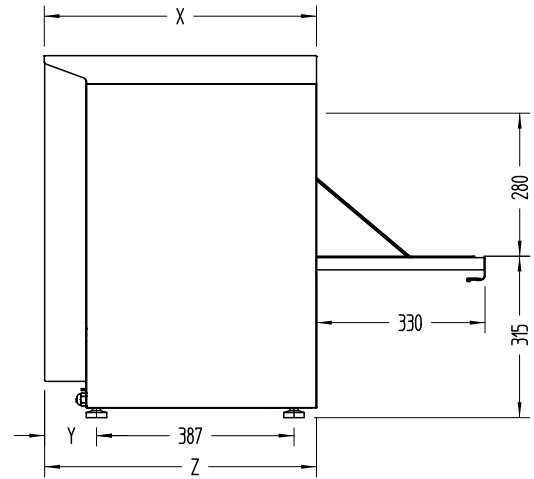
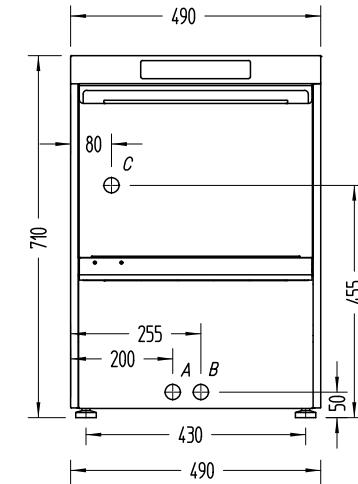
✓ Height: 710 mm

Net weight: 44 Kg

Noise level (1m.): <70 dB(A)

### Crated dimensions

525 x 615 x 820 mm



## AVAILABLE MODELS

1302042 Glasswasher S-41 230/50/1 DD

1302046 Glasswasher S-41B 230/50/1 DD (with drain pump)

1302050 Glasswasher S-41D 230/50/1 DD (built-in water softener)

1302054 Glasswasher S-41BD 230/50/1 DD (with drain pump and built-in water softener)

\* Ask for special versions availability

## ACCESSORIES

- Stands for glass- and dishwashers
- Dosing equipments
- Manual water softeners
- Automatic water softeners
- 400X400 mm. baskets
- Inserts, supplements & similar
- High Feet Kit

WARE WASHING  
COMMERCIAL GLASSWASHERS



[www.sammic.co.uk](http://www.sammic.co.uk)

Food Service Equipment Manufacturer

Unit 2, Trevanah Road  
Troon Industrial Park  
LE4 9LS - Leicester

[uksales@sammic.com](mailto:uksales@sammic.com)  
Tel.: +44 0116 246 1900



Project

Date

Item

Qty

Approved

product sheet  
updated 06/03/2018