

GEM Sandwich Chillers

Model: SC900 & SC1200 - Datasheet



GEM SC1200

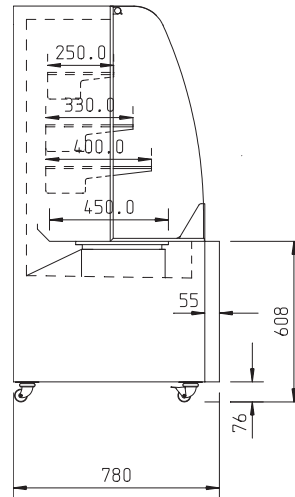
Key Features

- Ideal for front-of-house open display of drinks, snacks and other grab and go products
- Foodsafe stainless steel exterior and interior
- Forced air refrigeration provides even distribution of air to hold temperature
- Full width, energy saving LED strip lighting, for clear visibility
- Adjustable glass shelving for maximum flexibility
- Castors for easy positioning
- Digital controller with clear temperature display
- Tempered glass sides for all round visibility
- Self-retracting night blind
- Designed and engineered to operate efficiently up to a 25°C ambient, this exceeds Climate Class 3

Variant	Temp	Storage
GEM SC900	+2/+5°C	General Produce
GEM SC1200	+2/+5°C	General Produce

Dimensions

	GEM SC900	GEM SC1200
External (mm):	H1500 W900 D780	H1500 W1200 D780



Important Information

	GEM SC900	GEM SC1200
Capacity: cu.ft / litres	7.6 / 216	10.5 / 296
Construction		
Exterior	0.7mm polished stainless steel	0.7mm polished stainless steel
Interior	0.7mm BA stainless steel	0.7mm BA stainless steel
Power Supply	220V/240V 50Hz/1Ph 13 amp plug	220V/240V 50Hz/1Ph 13 amp plug
Power Input		
Start Up	34.3 amps	34.1 amps
Running	7.2 amps	8 amps
Compressor HP	1 HP	1 ¼ HP
Heat Rejection (Evaporating at -10°C in 25°C ambient)	2448 watts	2845 watts
Refrigerant	R404A	R404A
Defrost	Hot Gas	Hot Gas
Fittings	3 adjustable shelves & base	3 adjustable shelves & base



Bryggen Road, North Lynn Industrial Estate
King's Lynn, Norfolk PE30 2HZ

T +44 (0) 1553 817000

F +44 (0) 1553 817111

Spares +44 (0)1553 817017

E info@williams-refrigeration.co.uk

W www.williams-refrigeration.co.uk