



# RACK CONVEYOR DISHWASHER SRC-4000

150/225 baskets per hour (up to 4.050 plates/hour)



WARE WASHING  
RACK CONVEYOR DISHWASHERS



## SALES DESCRIPTION

Pre-washing + enhanced washing + double rinsing.

2 speeds.

## FEATURES AND BENEFITS

- ✓ Fully stainless steel jacket.
- ✓ Inlet and outlet splash guards are standard.
- ✓ Stainless steel central rack feed system.
- ✓ Process cycles are divided by rubber curtains.
- ✓ Automatic cycle start.

### Economy

- ✓ Energy saving rinse supply switch.
- ✓ Pressure controller in the rinse section to limit consumption.
- ✓ Programmed automatic stops if there is no loading.
- ✓ Stop and freezing of timer when the limit switch actuates.

### Cleaning and maintenance

- ✓ Wide pivoting door allowing access for cleaning or inspection purpose.
- ✓ Detachable arms and dispersers for easier cleaning.
- ✓ Sloped removable stainless steel filters with independent removable basket.
- ✓ Easy boiler emptying by loosening a hose.
- ✓ Failures are easily detected thanks to the warning lights.
- ✓ Easy to repair without moving the machine.

### Washing

- ✓ Stainless steel wash arms and deep-drawn dispersers.
- ✓ Efficient and durable wash arm dispersers.
- ✓ Powerful, self-draining vertical wash pump.
- ✓ Easy to install detergent dispenser intake in washing tank.

### Rinsing

- ✓ Stainless steel rinse arms and powerful, stainless steel, deep-drawn dispersers.
- ✓ Automatic boiler filling with no failure risk for heating elements.
- ✓ Temperature control with high precision probes.
- ✓ Visualisation and adjustment of washing and rinsing temperatures in the digital display by pressing a button.
- ✓ Easy to install rinse aid dispenser intake in boiler.

## INCLUDES

- ✓ Inlet and outlet splash guards are standard.



[www.sammic.co.uk](http://www.sammic.co.uk)

Food Service Equipment Manufacturer

Unit 2, Trevanah Road  
Troon Industrial Park  
LE4 9LS - Leicester

[uksales@sammic.com](mailto:uksales@sammic.com)  
Tel.: +44 0116 246 1900



Project

Date

Item

Qty

Approved

product sheet  
updated 06/03/2018



# RACK CONVEYOR DISHWASHER SRC-4000

150/225 baskets per hour (up to 4.050 plates/hour)



## SPECIFICATIONS

### Production

- ✓ Production baskets/hour: 150 / 225
- ✓ Production plates/hour: 2700 / 4050

### Pre-wash

- ✓ Temperature: 35 °C - 45 °C
- ✓ Pre-wash basin capacity: 60 l
- ✓ Pump: 1.2 Hp / 880 W

### Boosted wash

- ✓ Temperature: 55 °C - 65 °C
- ✓ Wash tank capacity: 100 l
- ✓ Pump: 3.5 Hp / 2600 W
- ✓ Wash heating element: 9000 W

### Pre-rinse

- ✓ Temperature: 65 °C - 75 °C
- ✓ Pre-rinse basin capacity: 15 l
- ✓ Pump: 0.2 Hp / 0.15 W
- ✓ Pre-rinse heating element: 6000 W

### Rinse

- ✓ Temperature: 80 °C - 90 °C
- ✓ Water consumption: 390 l/h
- ✓ Rinse heating element: 21000 W
- ✓ Boiler capacity: l

### Drag

- ✓ Drag motor power: 0.25 Hp / 135 W

### Loading

- ✓ Total installed power: 39810 W

### External dimensions (WxDxH)

- ✓ Width: 2900 mm
- ✓ Depth: 829 mm
- ✓ Height: 1520 mm

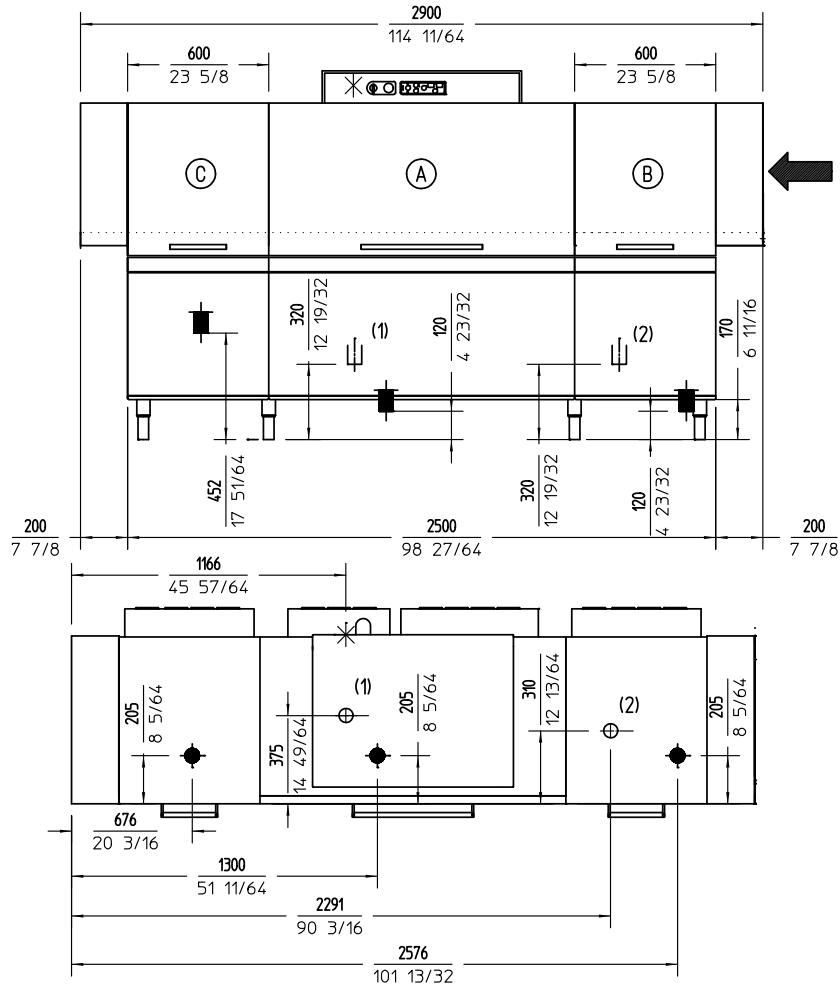
**Net weight:** 450 Kg

**Water Intake:** 3/4 "

**Drain diameter:** 1 1/2 "

**Noise level (1m.):** 71 dB(A)

**Please note: +3kW rinse heating element in models equipped with steam condenser.**



## AVAILABLE MODELS

1302730 Dishwasher SRC-4000D 400/50/3N (right hand entry)

1302747 Dishwasher SRC-4000I 400/50/3N (left hand entry)

\* Ask for special versions availability

## ACCESSORIES

- Drying units
- Manual water softeners
- Automatic water softeners
- 500 x 500 mm. baskets
- Inserts, supplements & similar
- Loading table for corner situation for rack conveyor dishwashers
- Central sorting tables
- Double connection central sorting table
- Single exit tables
- Roller conveyor and corner roller conveyor
- Machined curve
- CA Extraction hood
- EV Extraction hood with motor
- CV Extraction hood with steam condensation
- Connecting tables for Pass-Through dishwashers and rack conveyors
- Drying unit for corner situation

WARE WASHING  
RACK CONVEYOR DISHWASHERS



[www.sammic.co.uk](http://www.sammic.co.uk)

Food Service Equipment Manufacturer

Unit 2, Trevanah Road  
Troon Industrial Park  
LE4 9LS - Leicester

[uksales@sammic.com](mailto:uksales@sammic.com)  
Tel.: +44 0116 246 1900



Project

Date

Item

Qty

Approved

product sheet  
updated 06/03/2018