



RACK CONVEYOR DISHWASHER SRC-5000

183/275 baskets per hour (up to 4.950 plates/hour)



WARE WASHING
RACK CONVEYOR DISHWASHERS



SALES DESCRIPTION

Pre-washing + first washing + enhanced washing + double rinsing.

2 speeds.

FEATURES AND BENEFITS

- ✓ Fully stainless steel jacket.
- ✓ Inlet and outlet splash guards are standard.
- ✓ Stainless steel central rack feed system.
- ✓ Process cycles are divided by rubber curtains.
- ✓ Automatic cycle start.

Economy

- ✓ Energy saving rinse supply switch.
- ✓ Pressure controller in the rinse section to limit consumption.
- ✓ Programmed automatic stops if there is no loading.
- ✓ Stop and freezing of timer when the limit switch actuates.

Cleaning and maintenance

- ✓ Wide pivoting door allowing access for cleaning or inspection purpose.
- ✓ Detachable arms and dispersers for easier cleaning.
- ✓ Sloped removable stainless steel filters with independent removable basket.
- ✓ Easy boiler emptying by loosening a hose.
- ✓ Failures are easily detected thanks to the warning lights.
- ✓ Easy to repair without moving the machine.

Washing

- ✓ Stainless steel wash arms and deep-drawn dispersers.
- ✓ Efficient and durable wash arm dispersers.
- ✓ Powerful, self-draining vertical wash pump.
- ✓ Easy to install detergent dispenser intake in washing tank.

Rinsing

- ✓ Stainless steel rinse arms and powerful, stainless steel, deep-drawn dispersers.
- ✓ Automatic boiler filling with no failure risk for heating elements.
- ✓ Temperature control with high precision probes.
- ✓ Visualisation and adjustment of washing and rinsing temperatures in the digital display by pressing a button.
- ✓ Easy to install rinse aid dispenser intake in boiler.

INCLUDES

- ✓ Inlet and outlet splash guards are standard.



www.sammic.co.uk

Food Service Equipment Manufacturer

Unit 2, Trevanah Road
Troon Industrial Park
LE4 9LS - Leicester

uksales@sammic.com
Tel.: +44 0116 246 1900



Project

Date

Item

Qty

Approved

product sheet
updated 06/03/2018



RACK CONVEYOR DISHWASHER SRC-5000

183/275 baskets per hour (up to 4.950 plates/hour)



SPECIFICATIONS

Production

- ✓ Production baskets/hour: 183 / 275
- ✓ Production plates/hour: 3294 / 4950

Pre-wash

- ✓ Temperature: 35 °C - 45 °C
- ✓ Pre-wash basin capacity: 60 l
- ✓ Pump: 1.2 Hp / 880 W

First wash

- ✓ Temperature: 55 °C - 65 °C
- ✓ 1st wash tank capacity: 60 l
- ✓ Pump: 1.2 Hp / 880 W
- ✓ 1st wash heating element : 6000 W

Boosted wash

- ✓ Temperature: 55 °C - 65 °C
- ✓ Wash tank capacity: 100 l
- ✓ Pump: 3.5 Hp / 2600 W
- ✓ Wash heating element: 9000 W

Pre-rinse

- ✓ Temperature: 65 °C - 75 °C
- ✓ Pre-rinse basin capacity: 15 l
- ✓ Pump: 0.2 Hp / 0.15 W
- ✓ Pre-rinse heating element: 6000 W

Rinse

- ✓ Temperature: 80 °C - 90 °C
- ✓ Water consumption: 480 l/h
- ✓ Rinse heating element: 27000 W
- ✓ Boiler capacity: -- l

Drag

- ✓ Drag motor power: 0.25 Hp / 135 W
- ✓

Loading

- ✓ Central module total power : 52790 W
- ✓

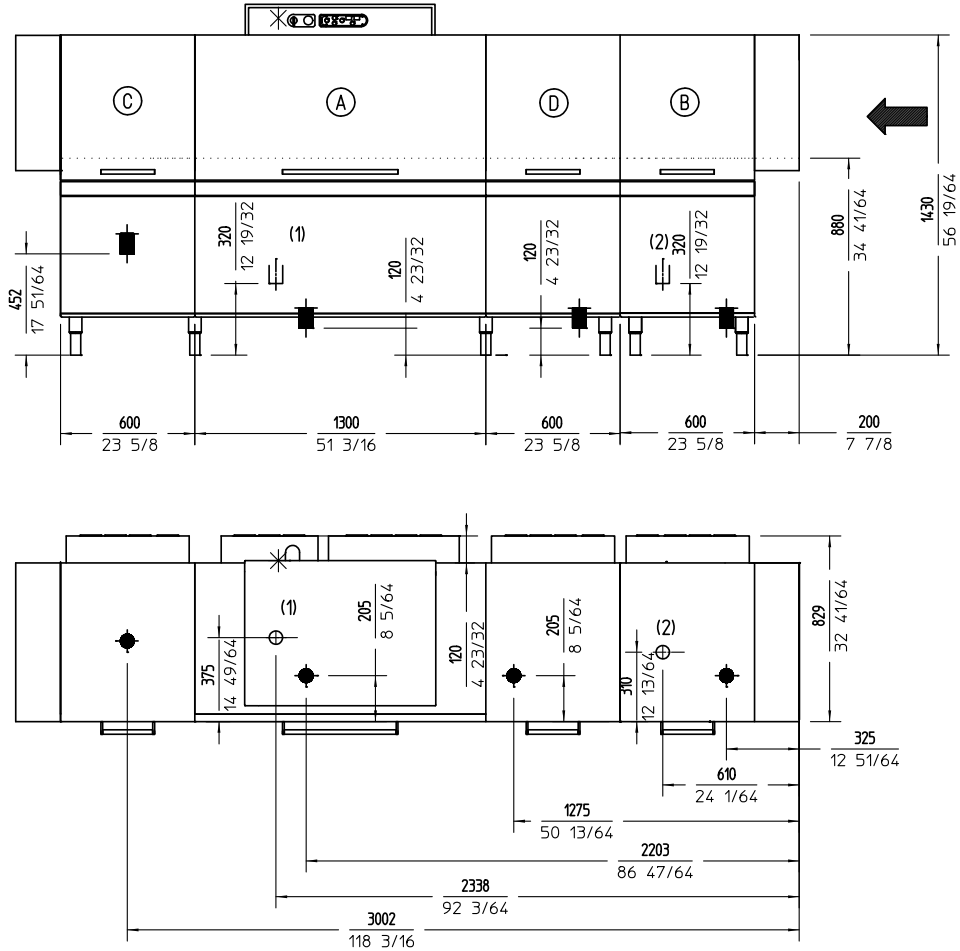
External dimensions (WxDxH)

- ✓ Width: 3500 mm
- ✓ Depth: 829 mm
- ✓ Height: 1520 mm

Net weight: 540 Kg

Water Intake: 3/4 "

Drain diameter: 1 1/2 "



AVAILABLE MODELS

1302800 Dishwasher SRC-5000D 400/50/3N (right hand entry)

1302813 Dishwasher SRC-5000I 400/50/3N (left hand entry)

* Ask for special versions availability

ACCESSORIES

- | | |
|---|--|
| <input type="checkbox"/> Drying units | <input type="checkbox"/> Roller conveyor and corner roller conveyor |
| <input type="checkbox"/> Manual water softeners | <input type="checkbox"/> Machined curve |
| <input type="checkbox"/> Automatic water softeners | <input type="checkbox"/> CA Extraction hood |
| <input type="checkbox"/> 500 x 500 mm. baskets | <input type="checkbox"/> EV Extraction hood with motor |
| <input type="checkbox"/> Inserts, supplements & similar | <input type="checkbox"/> CV Extraction hood with steam condensation |
| <input type="checkbox"/> Loading table for corner situation for rack conveyor dishwashers | <input type="checkbox"/> Connecting tables for Pass-Through dishwashers and rack conveyors |
| <input type="checkbox"/> Central sorting tables | <input type="checkbox"/> Drying unit for corner situation |
| <input type="checkbox"/> Double connection central sorting table | |
| <input type="checkbox"/> Single exit tables | |

WARE WASHING
RACK CONVEYOR DISHWASHERS



www.sammic.co.uk

Food Service Equipment Manufacturer

Unit 2, Trevanah Road
Troon Industrial Park
LE4 9LS - Leicester

uksales@sammic.com
Tel.: +44 0116 246 1900



Project

Date

Item

Qty

Approved

product sheet
updated 06/03/2018