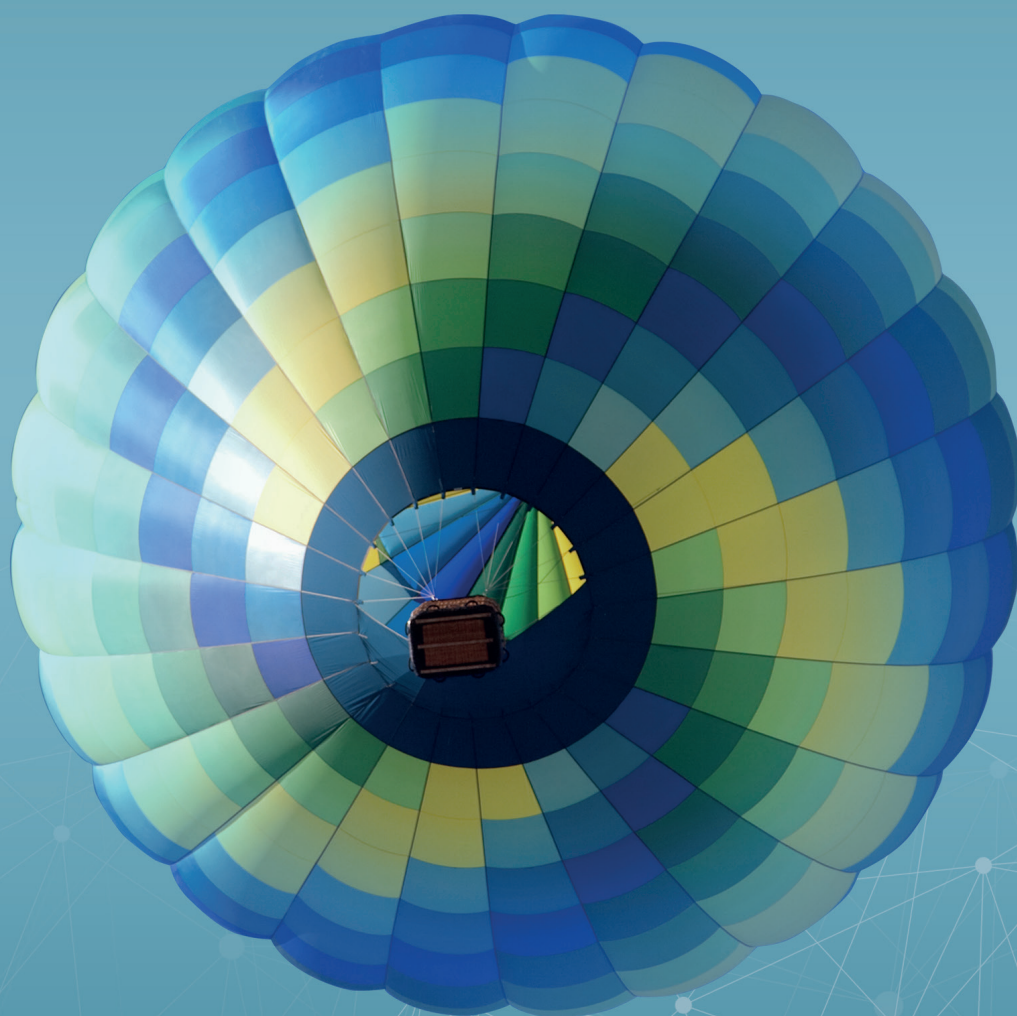




Shaping the effortless laundry

Line 6000 Dryers



Electrolux Professional Line 6000

Innovation is the driver of great performance

Our intensive research and cutting-edge product development have led to an ergonomic line of dryers that ensures effortless operation and exceptional savings.



Easier, healthier, safer

Certified ergonomic design with a human-centered approach for an outstanding user experience.



Real-time solutions

Monitor your equipment's status and performance from anywhere and take action to improve your business.



Long-term savings

Innovative features to save money and time, and embrace a sustainable lifestyle.



Outstanding productivity

Wash and dry more laundry in less time.



Adaptive Fan

High performance, less noise

The **Adaptive Fan** control **adjusts the fan speed automatically to save energy, reduce drying time, and provide an even drying result.**

It can also be used to reduce the noise level when needed, and makes it easier to install dryers in a challenging environment. Adaptive Fan turns on automatically, for example if filters are clogged or if ventilation ducts are too small. It also makes the fan last longer, to save you time and money.

*The Adaptive Fan control is only available with the electric version.

Moisture Balance

Dry not overdry

Moisture Balance measures the exact **moisture level** throughout the drying process. Protects garments and saves energy by stopping as soon as they are dry, or at the moisture level you set.

Drum Speed

Best result with all fabrics

From delicate silk to heavy cotton: manually **adjusts the drum speed to control the mechanical action.** Garments will move correctly in the drum for the fastest drying.