



UTENSIL WASHER UX-600CV 230400/50/3N DD

Rack size 600 mm x 630 mm and door clearance 650 mm. Constant temperature rinsing system. HRS system.

1303512



WARE WASHING
POT WASHERS

SALES DESCRIPTION

Door clearance 650 mm.
Equipped with a steam condenser.

Ideal to wash big sized pots and wares.

- ✓ Powerful and high pressure: specially indicated for restaurants, ice-cream shops, pastries and butcheries.
- ✓ Constructed from stainless steel.
- ✓ Door divided in two parts, perfectly counterbalanced, easy to handle.
- ✓ Double skinned machines: silent working and reduced thermal dispersions.
- ✓ Wash tank without corners to avoid dirt accumulation in angles.
- ✓ Stamped wash dispersers in stainless steel tubes.
- ✓ Easy to remove wash- and rinse dispersers.
- ✓ Safety micro switch at the door and electronic safety device to guarantee washing temperature and time.
- ✓ Advanced LCD control panel with humidity protection. Display of wash and rinse temperatures.
- ✓ Reduced water consumption.

INCLUDES

- ✓ 1 stainless steel basket and insert for 4 trays.
- ✓ Adjustable detergent and rinse aid dosing equipment.
- ✓ HRS system: steam condenser.

OPTIONAL

- ☐ Stainless basket.
- ☐ Drainage pump with level sensor. Proactive tank water renewal.
- ☐ Stainless carrier for trays.

ACCESSORIES

- ☐ Stainless steel baskets
- ☐ Dosing equipments
- ☐ Manual water softeners
- ☐ Carrier for trays
- ☐ Automatic water softeners

SPECIFICATIONS

Basket dimensions: 600 mm x 630 mm
Stainless steel basket: 1
Equipment: supplementary trays: 1
Useful height: 650 mm
Cycles: 5
Cycle duration: 120 / 180 / 240 / 360 / 480"
Production baskets / hour: 30 / 20 / 15 / 10 / 7
Electrical supply: 230-400 V / 50 Hz / 3N~

Loading

- ✓ Pump: 3 Hp / 2200 W
- ✓ Tank: 6000 W
- ✓ Boiler: 9000 W
- ✓ Total loading: 11200 W
- Feed water temperature: 10°C - 60°C
- Wash temperature: 40°C - 70°C
- Rinse temperature: 65°C - 87°C
- Wash tank capacity: 55 l
- Boiler capacity: 12 l
- Water consumption/cycle: 3.5 l
- Drainage base maximum height: 185 mm
- Drain diameter: 30 mm

External dimensions (W x D x H)

- ✓ Width: 742 mm
- ✓ Depth (closed): 852 mm
- ✓ Depth (open): 1232 mm
- ✓ Height (closed): 2012 mm
- ✓ Height (open): 2035 mm

Net weight: 209 kg

Crated dimensions

790 x 980 x 1950 mm

Gross weight: 223 kg



SAMMIC, S.L. · Basarte, 1
20720 AZKOITIA (Gipuzkoa) · SPAIN

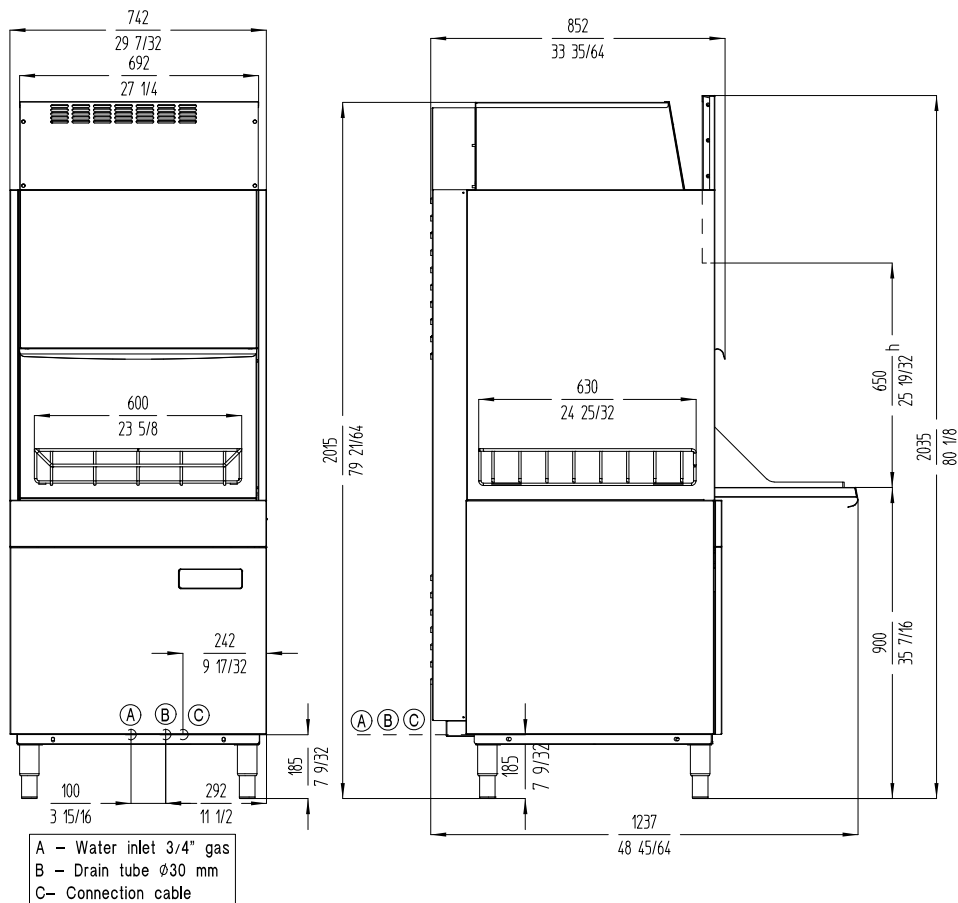
UTENSIL WASHER UX-600CV 230400/50/3N DD

Rack size 600 mm x 630 mm and door clearance 650 mm. Constant temperature rinsing system.
HRS system.

1303512



WARE WASHING
POT WASHERS



sammic.co.uk

Food Service Equipment Manufacturer

Unit 2, Trevanth Road

Troon Industrial Park

LE4 9LS - Leicester

uksales@sammic.com

Tel.: +44 0116 246 1900



Project	Date
Item	Qty
Approved	

product sheet
updated 03/12/2025