

MODELS: VCO9	VCO12	VCO15	VCO18	PASTRY DISPLAY CASES – Combo Series
---------------------	--------------	--------------	--------------	--

General Strengths

- ✓ **Control systems.** Higher precision in managing temperature settings. Greater ability to adjust of temperature ranges as per the end user's requirement.
- ✓ **100% Tested.** All condenser units are tested 100%, in helium chambers to refrigerant leak detections.
- ✓ **Certified.** AENOR audited and certified by internationally recognized firm. ISO 9001:2008 (Quality); ISO 14001:2004 (Environmental); OSHAS 18001:2007 (Prevention and Worker Safety).
- ✓ **Lighting.** LED lighting in the canopy and shelves reduces the energy consumption by 80% and 90% compared to a traditional bulb. Provides a much better light quality.



MODELS	Dimensions (mm)			Lateral Thickness (mm)	Shelving (Refrigerated Area)	Exposure Surface (m ²)	Chamber Volume (L)	Gross Volume (L)	Regimen Temp. (°C)	Ref.	Ref. Weight (gr.)	Net Weight (Kg.)
	Width	Depth	High									
VCO9	938	890	1455	30 + 30	1	0,59	201	1292	+2°C/+5°C	R404A	350	154
VCO12	1250	890	1455	30 + 30	1	0,79	268	1696	+2°C/+5°C	R404A	400	154
VCO15	1562	890	1455	30 + 30	1	0,98	334	2100	+2°C/+5°C	R404A	450	186
VCO18	1875	890	1455	30 + 30	1	1,18	401	2506	+2°C/+5°C	R404A	500	206

WE RESERVE THE RIGHT TO CHANGE SPECIFICATIONS WITHOUT PRIOR NOTICE

Project: _____

Location: _____

Item #: _____ Quantity: _____

Model #: _____

MODELS: VCO9	VCO12	VCO15	VCO18	PASTRY DISPLAY CASES – Combo Series
---------------------	--------------	--------------	--------------	--

STANDARD FEATURES

➤ Exterior

- Laminated steel plate,
- Exhibition area in EPOXI,
- Decoration DM lacqued,
- Hinged front tempered glass,
- Rear sliding doors,
- Double lateral glass sides,
- Night curtain,

➤ Interior

- Enamelled steel base,
- LED lighting in the front,
- LED lighting in canopy and under each shelf,

➤ Insulation

- Insulation by free CFC's polyurethane foam high-pressure injected with density 40 Kg/m³,
- Zero ODP and Low GWP.

➤ Refrigeration

- Temperature and defrost regulated by a digital controller,
- Rear electronic thermostat,
- System of Ventilated Condensation,
- System of Forced Evaporation,
- Double stainless steel evaporative pan, first with hot gas, second with electrical resistance,
- Climate class 3 (25°C, 60HR).

➤ Electrical

- Electrical connection: 230 V / 1 ph / 50 Hz



OPTIONAL

- Electrical connection 220 V / 1 ph / 60 Hz,
- Electrical connection 115 V / 1 ph / 60 Hz.

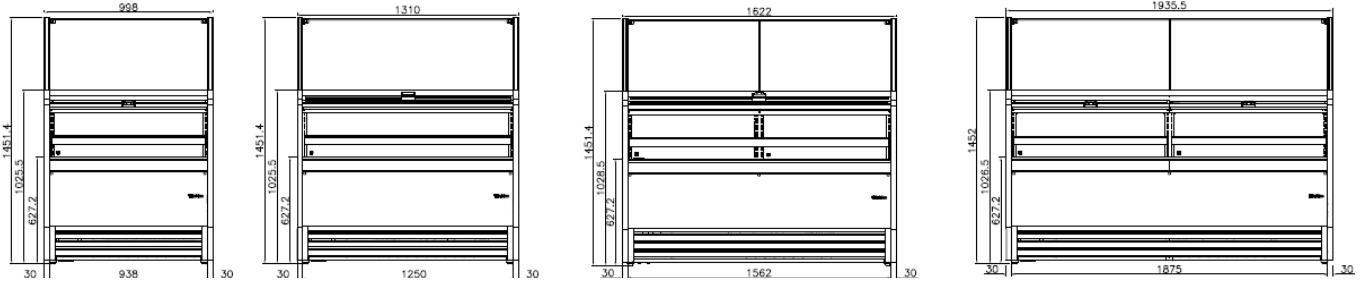
MODELS	Dimensions Palletizing (mm)			Crated Weight (Kg.)	Power (W)	Comp. (HP)	Refrig. Needs (W to -10°C)	Cons. (kWh/24h)	Inten. (A)	Level Noise (dB)	Container 20'/40'/40'HC	Trailer
	Width	Depth	High									
VCO9	1095	990	1550	190	1015	5/8	1096	16,2		58,7	9 / 20 / 20	24
VCO12	1400	990	1550	200	1070	3/4	1315	17,1		59,1	7 / 16 / 16	22
VCO15	1720	990	1550	240	1310	7/8	1506	19,6		59,5	5 / 13 / 13	15
VCO18	2030	990	1550	275	1405	1	1840	22,5		59,9	4 / 10 / 10	12

WE RESERVE THE RIGHT TO CHANGE SPECIFICATIONS WITHOUT PRIOR NOTICE

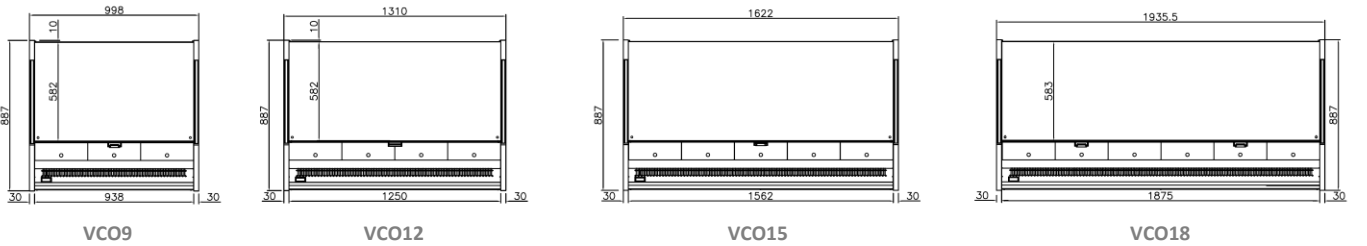
MODELS: **VCO9** **VCO12** **VCO15** **VCO18** **PASTRY DISPLAY CASES – Combo Series**

PLAN VIEW

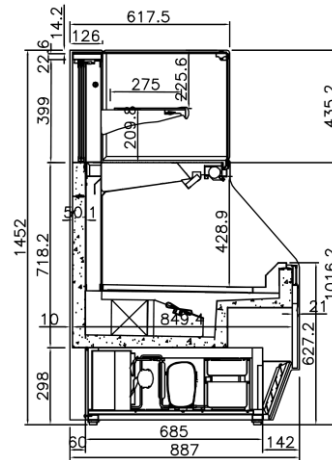
ELEVATION



PLAN VIEW

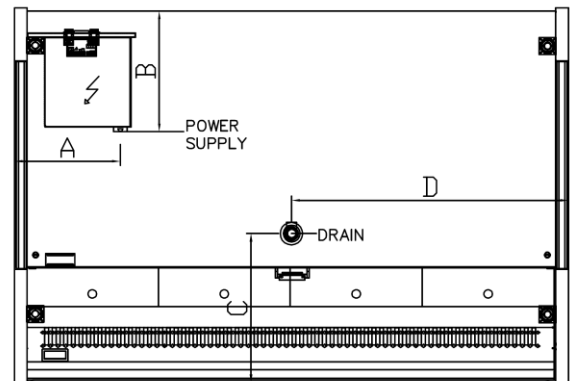


RIGHT VIEW



CONNECTIONS

MODELS	A (mm)	B (mm)	C (mm)	D (mm)
VCO9	250	285	353	498
VCO12	250	285	353	654
VCO15	250	285 <td 353	810	
VCO18	250	285	353	967



WE RESERVE THE RIGHT TO CHANGE SPECIFICATIONS WITHOUT PRIOR NOTICE