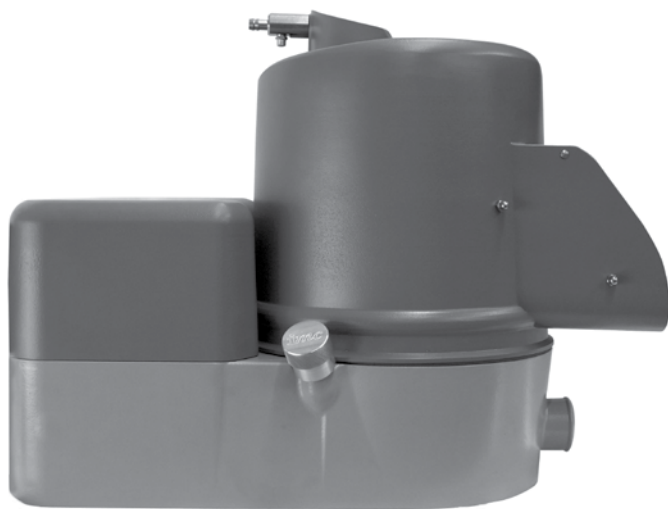


VQ Peelers

January 2011
(UK Version)



Technical Information
VQ Potato Peelers

imc
fresh thinking



overview

The VQ range of bench-top potato peelers is designed for ease of use, ease of cleaning and easy integration into any small or medium size kitchen.

In a choice of two capacities and two levels of output per hour, the small footprint of the compact VQ Peeler makes it ideally suited to bench-top mounting.

Despite its compact size, it is robustly constructed, with extensive use of rust-free stainless steel and cast aluminium. The peeling plate has a thick grit layer for longer life and more effective peeling.

The self-draining cylinder and smooth profile of the cylinder base are specifically designed for quicker, easier cleaning.

Electrical Connection

All electrical work must be carried out by a qualified electrician in accordance with the IEE Codes of Practice.

Product Conformity

IMC VQ peelers conform to the Machine Safety Directive 89/392/EEC as amended by 91/368/EEC and 93/44/EEC and are manufactured under quality system BS EN ISO 9001:2008. They also conform to the protection requirements of the Electro Magnetic Compatibility Directive 2004/108/EC and are manufactured in accordance with harmonised standards EN 55-014-1 Generic Emission and EN 55-014-2 Generic Immunity (plus product specific standards). They also satisfy the essential requirements of the Low Voltage Directive 2006/95/EC amended by 93/68/EEC.

All IMC VQ peelers are WRAS approved and manufactured in accordance with standards BEN60335-1 and BEN 60335-2-64.

Marine Applications

A range of marine voltages and a lid retaining strap are available and the pedestal can be deck bolted.

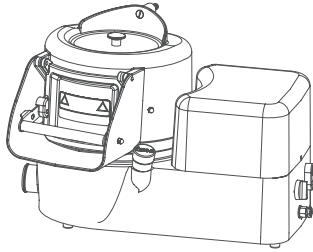
Warranty

IMC VQ peelers come with two years' parts and labour warranty (subject to usage and regular maintenance as laid down in the operation and installation manual).

Spare Parts

Spare parts are available for all major serviceable items. Please contact:

| | |
|------------------------|--------------------|
| IMC service telephone: | +44 (0)1978 667743 |
| IMC spares telephone: | +44 (0)1978 667764 |
| Fax: | +44 (0)1978 729990 |
| E-mail: | parts@imco.co.uk |



VQ 3.5

General

| | |
|---------------------------------|--|
| Mounting | Worktop-, drainer-, stand- or pedestal-mounted |
| Capacity | 3.5kg (7lb) |
| Output | 35kg/hour |
| Dimensions (h x w x d) | 425mm x 650mm max x 380mm |
| Discharge height | 170mm |
| Discharge heights with pedestal | 750, 800, 850, 900 and 950mm |
| Discharge height with trolley | 1055mm |

Electrical information

| | |
|-------------------|--|
| Motor | 180W |
| Voltages | 230-1-50/60 400-3-50/60 |
| Fuse rating | 10A (1 phase) 5A (3 phase) |
| Operator controls | Easy to use with on/off switch and mechanical timer. |

Installation information

| | |
|-------------------------------|--|
| General | A level table or sink-top |
| Water connection | WRAS approved water inlet hose and air break supplied Connect to an adjacent cold water supply |
| Waste water outlet connection | 250mm long 54mm diameter flexible rubber waste pipe |
| Electrical connection | 2.5m mains cable supplied with 13amp plug for single phase 3 phase to be wired into fused isolator switch |

Other features

| | |
|------------------|--|
| Operator safety | No-volt release to prevent automatic restart if power is cut Safety interlock to prevent operation when cylinder is removed Motor protection IP55 |
| Special features | WRAS approved Class AA air-break Quick and easy to clean Designed for easy maintenance Hygienic, robust cast aluminium and stainless steel construction Rust-proof peeling plate and liners Space-saving, multi-functional, compact design Quiet operation Energy efficient |

Product code details

| | |
|--|---------------------------|
| | F72/200 VQ3.5 230-1-50/60 |
| | F72/201 VQ3.5 400-3-50/60 |

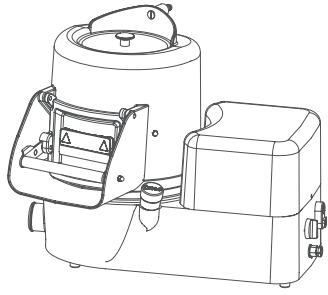
Customer accessories

| | |
|--|---|
| | E72/011 Sink skip - stainless steel |
| | S72/220 Trolley |
| | S72/221 Pedestal - adjustable height |
| | S72/023 Waste ejector for more effective waste evacuation |
| | S58/569 Interceptor tank |
| | A29/003 Lid retaining strap |

Shipping specification

| | |
|--------------------------------|-----------------------|
| Packing dimensions (h x w x d) | 455mm x 730mm x 420mm |
| Packing volume | 0.140m ³ |
| Packing weight (gross/net) | 31/27kg |

Please note:
Capacities are approximate and output may vary depending on the type and age of potatoes used.
All diagram dimensions are in mm.

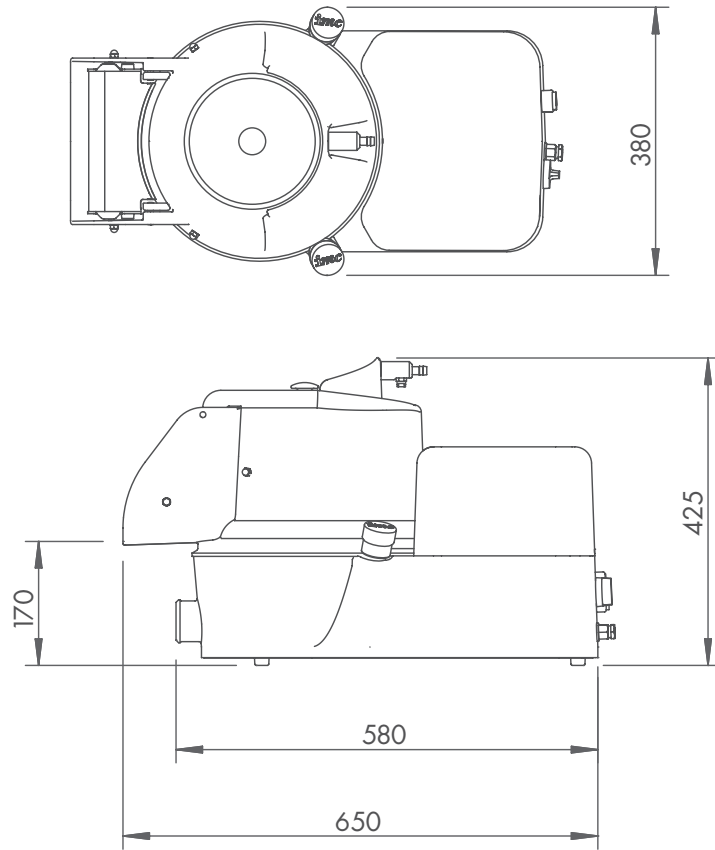


VQ 7

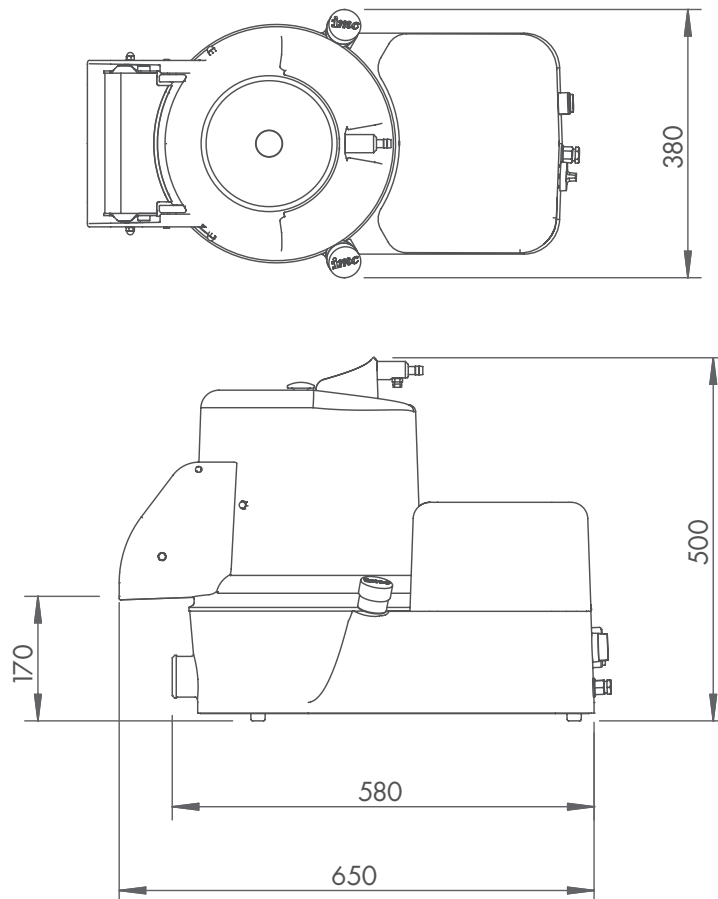
| General | |
|---------------------------------|--|
| Mounting | Worktop-, drainer-, stand- or pedestal-mounted |
| Capacity | 7kg (14lb) |
| Output | 50kg/hour |
| Dimensions (h x w x d) | 500mm x 650mm max x 380mm |
| Discharge height | 170mm |
| Discharge heights with pedestal | 750, 800, 850, 900 and 950mm |
| Discharge height with trolley | 1055mm |
| Electrical information | |
| Motor | 180W |
| Voltages | 230-1-50/60 400-3-50/60 |
| Fuse rating | 10A (1 phase) 5A (3 phase) |
| Operator controls | Easy to use with on/off switch and mechanical timer |
| Installation information | |
| General | A level table or sink-top |
| Water connection | WRAS approved water inlet hose and air break supplied |
| Waste water outlet connection | Connect to an adjacent cold water supply 250mm long 54mm diameter flexible rubber waste pipe |
| Electrical connection | 2.5m mains cable supplied with 13amp plug for single phase 3 phase to be wired into fused isolator switch |
| Other features | |
| Operator safety | No-volt release to prevent automatic restart if power is cut Safety interlock to prevent operation when cylinder is removed Motor protection IP55 |
| Special features | WRAS approved Class AA air-break Quick and easy to clean Designed for easy maintenance Hygienic, robust cast aluminium and stainless steel construction Rust-proof peeling plate and liners Space-saving, multi-functional, compact design Quiet operation Energy efficient |
| Product code details | |
| | F72/210 VQ7 230-1-50/60 |
| | F72/211 VQ7 400-3-50/60 |
| Customer accessories | |
| | E72/011 Sink skip - stainless steel |
| | S72/220 Trolley |
| | S72/221 Pedestal - adjustable height |
| | S72/023 Waste ejector for more effective waste evacuation |
| | S58/569 Interceptor tank |
| | A29/003 Lid retaining strap |
| Shipping specification | |
| Packing dimensions (h x w x d) | 530mm x 730mm x 420mm |
| Packing volume | 0.163m ³ |
| Packing weight (gross/net) | 33/29kg |

Please note:
Capacities are approximate and output may vary depending on the type and age of potatoes used.
All diagram dimensions are in mm.

VQ 3.5



VQ 7





IMC was founded in 1906 and has established itself as a leading manufacturer of commercial catering and bar equipment, with a reputation for quality, innovation and unrivalled customer service.

***Imperial Machine Company Ltd
Unit 1 Abbey Road
Wrexham Industrial Estate
Wrexham LL13 9RF
United Kingdom***

t +44 (0)1978 661155

f +44 (0)1978 729990

e sales@imco.co.uk

w www.imco.co.uk

imc
fresh thinking